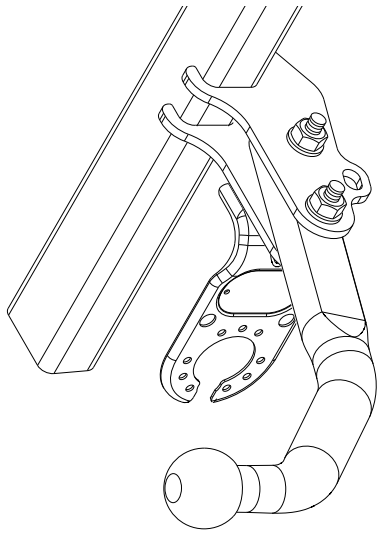


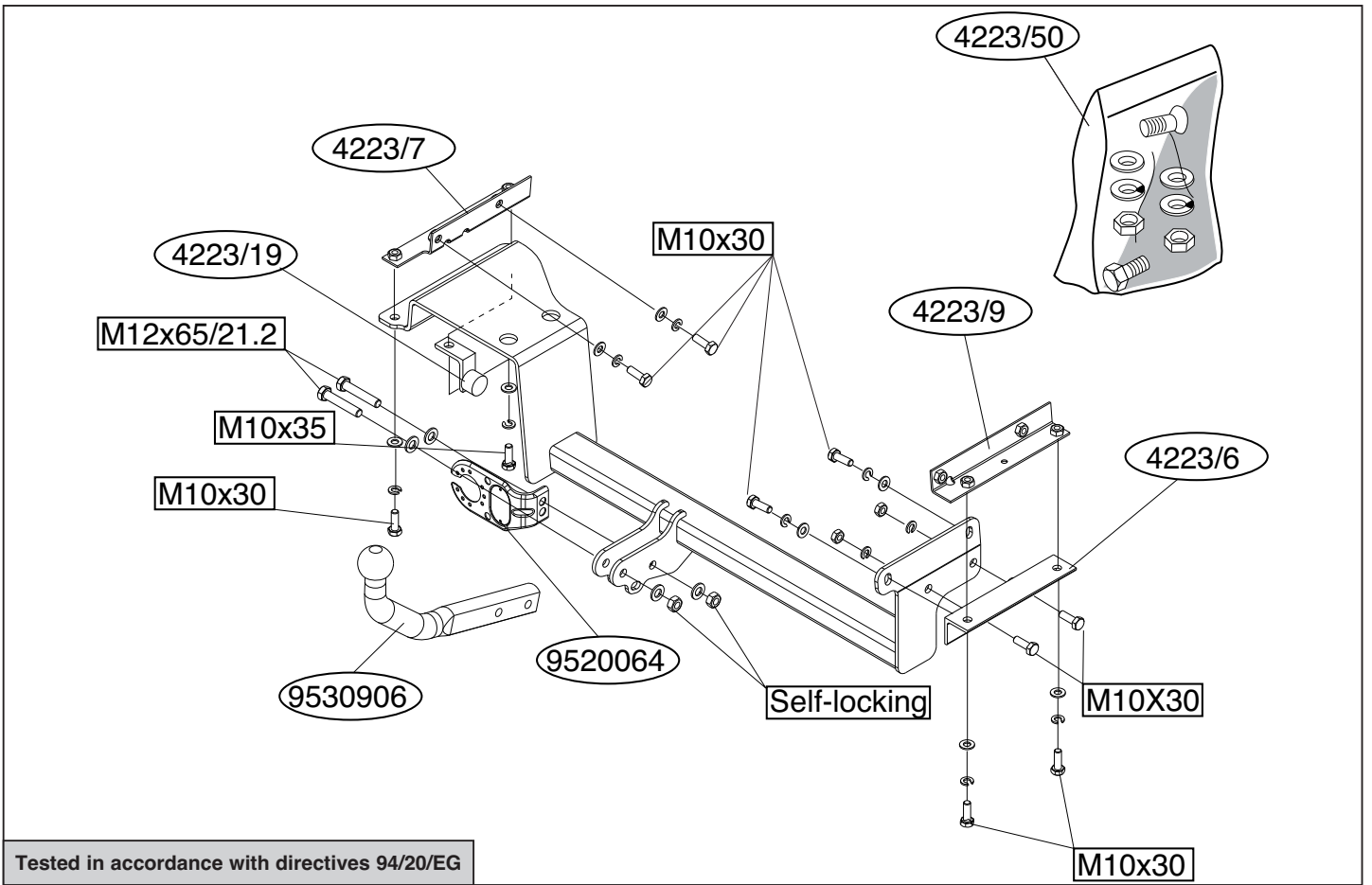
Fitting instructions

Make: Nissan

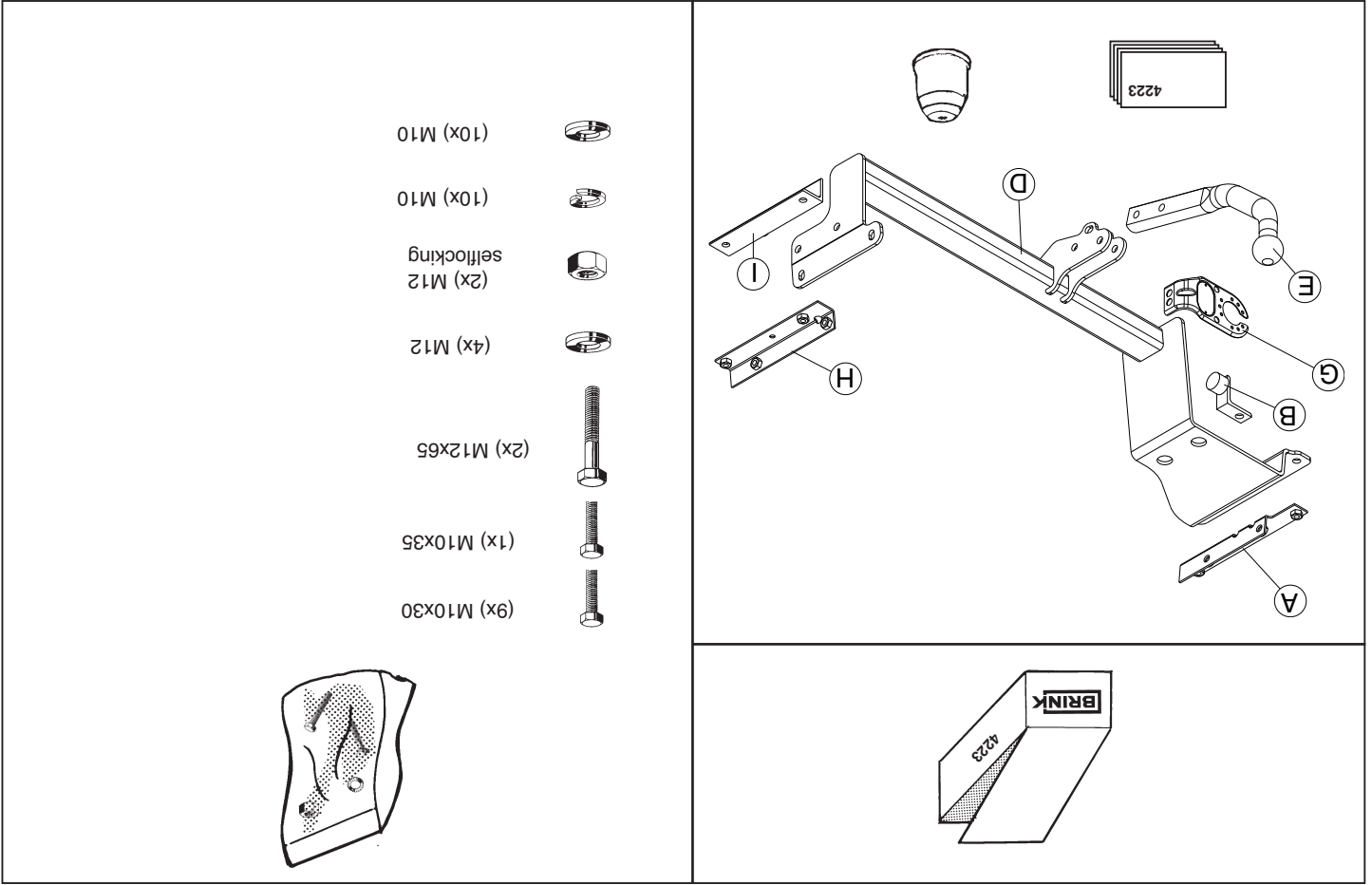
Micra; 2003->

Type: 4223





© 422370/18-12-2008/1



DA COMPIRE PER IL COLLAUDO

Per verificare l'idoneità del dispositivo di traino omologato a norma CEE 94/20, all'installazione sulla vettura su cui si intende procedere al montaggio, compilare la seguente formula (se necessario) declassare la massa rimorchiabile):

$$D = \frac{T \times C}{T + C} \times 0,00981 = \dots \text{KN}$$

dove: T = Massa Complessiva Max. della motrice (in kg)
 C = Massa Rimorchiabile Max. della motrice (in kg)

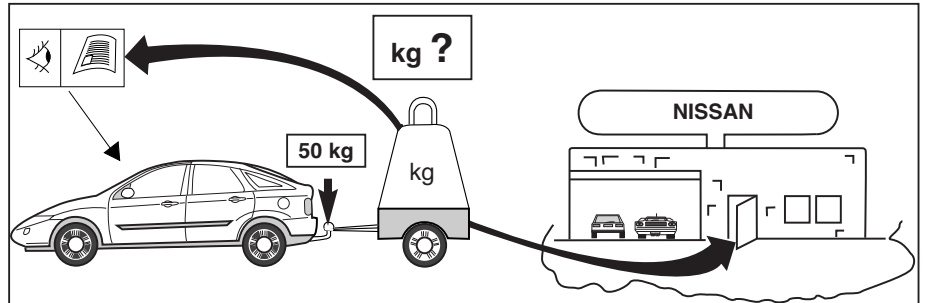
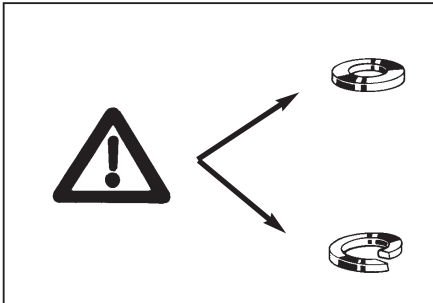
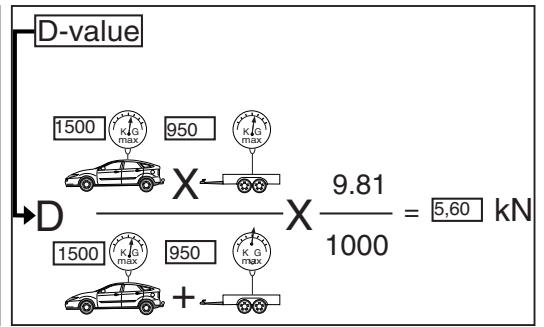
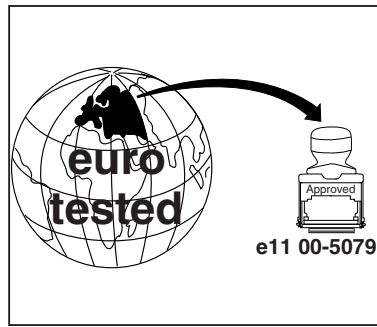
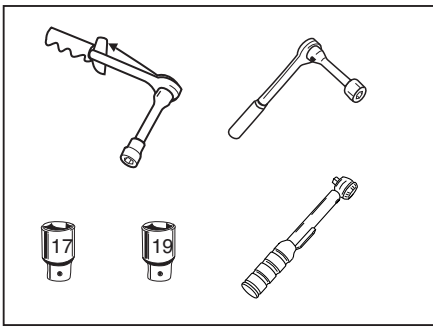
Classificazione e tipo di attacco: A50-X
 Omologazione: e11 00-5079
 Valore D: 5,60 kN
 Carico Verticale max. S: 50 kg
 Larghezza rimorchiabile per Caravan e T.A.T.S.: 2,45m vedere CARTA di CIRCOLAZIONE VEICOLO (motrice) + 70 cm = .arrotondare ai 5 cm
 Massa rimorchiabile: vedi carta di circolazione dell' autoveicolo

Dispositivo di traino tipo: P.C. Brink 4223
 Per autoveicoli: Nissan Micra; 2003->
 Tipo funzionale:

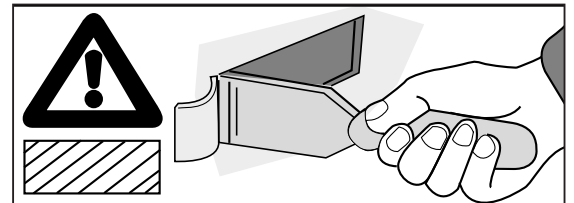
Si dichiara inoltre di aver informato l'utente del veicolo sull'USO e MANUTENZIONE del dispositivo stesso.

Il dispositivo di attacco sopra indicato è stato installato su autoveicolo
 tipo:
 modello:
 targa:
 Data:

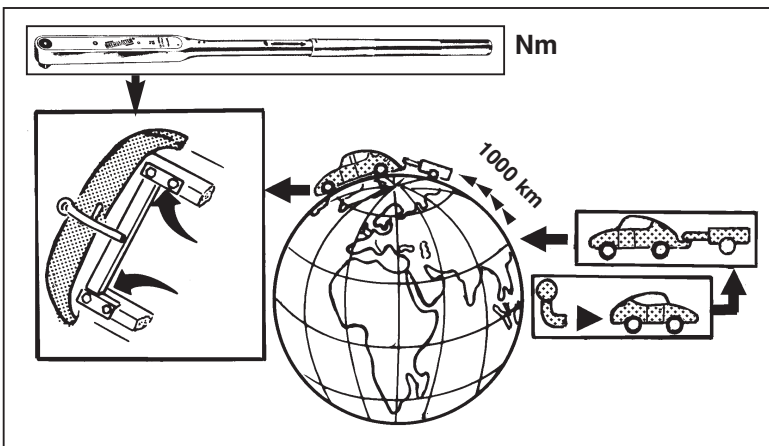
TIMBRO e FIRMA



See Workshop Manual section Body and Trim
 Voir Manuel d'atelier section Carrosserie et draper
 Siehe Werkstatthandbuch Bereich Unterbau/Rahmengruppe
 - Ausschnitt
 Se Verkstadsmanualen under kapitlet kaross och inredning.
 Zie werkplaatshandboek sectie Carrosserie & bekleding
 Ver manual de taller sección Carrocería e Interiores
 Consultare la sezione relativa a Carrozzeria e Interni del
 manuale di manutenzione.



© 422370/18-12-2008/3

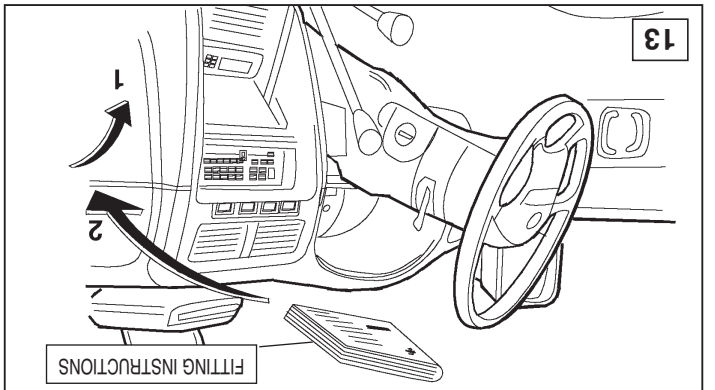
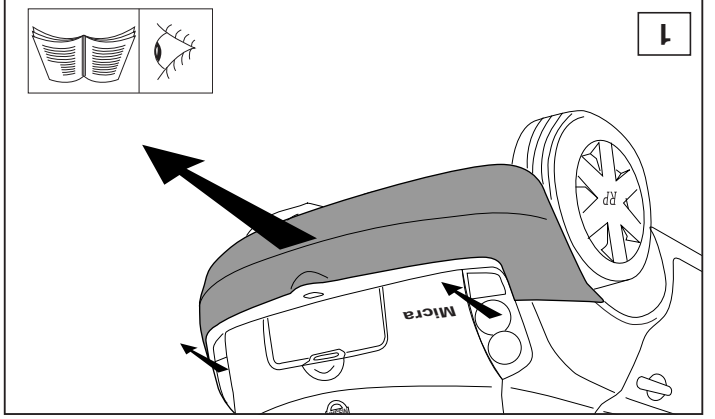
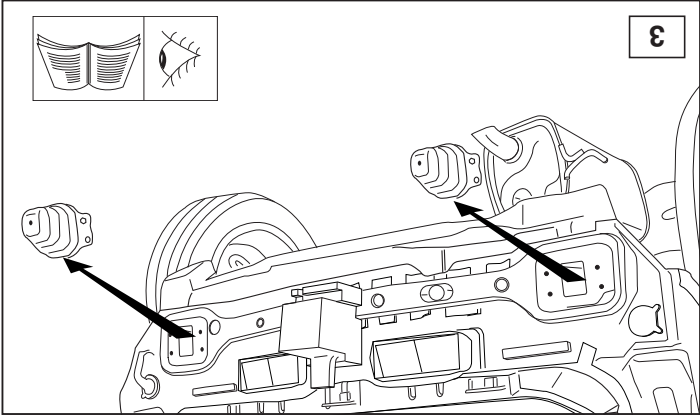
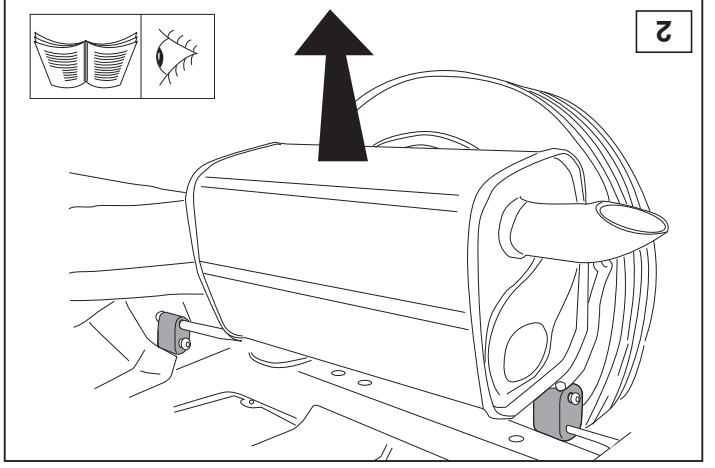
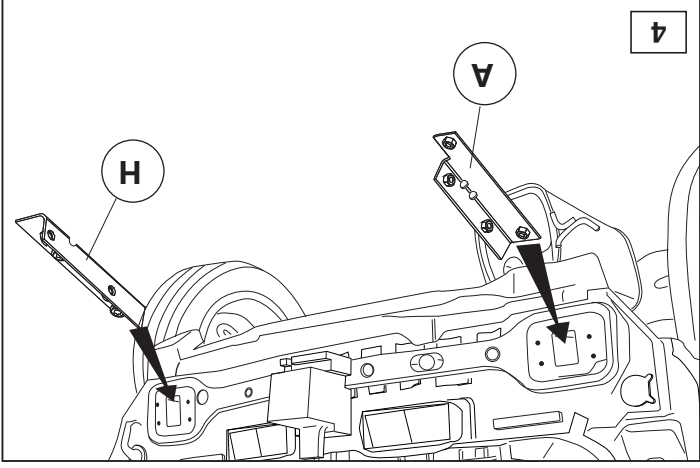


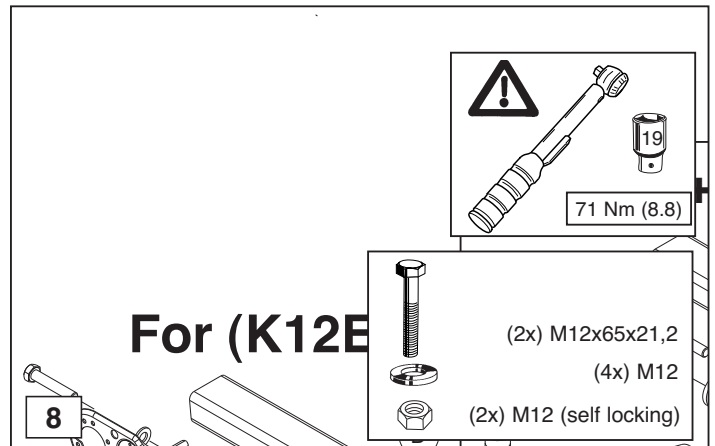
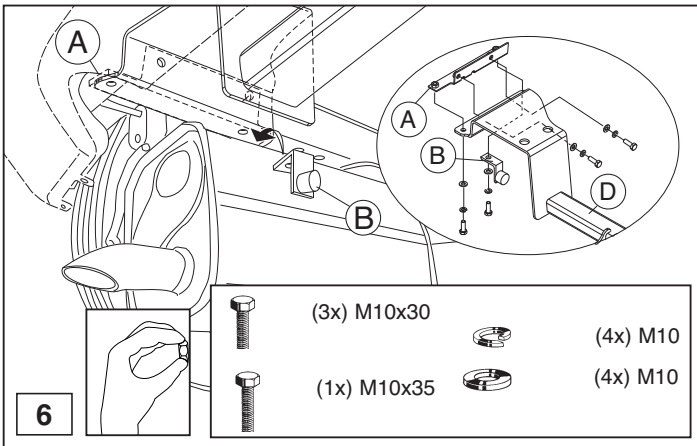
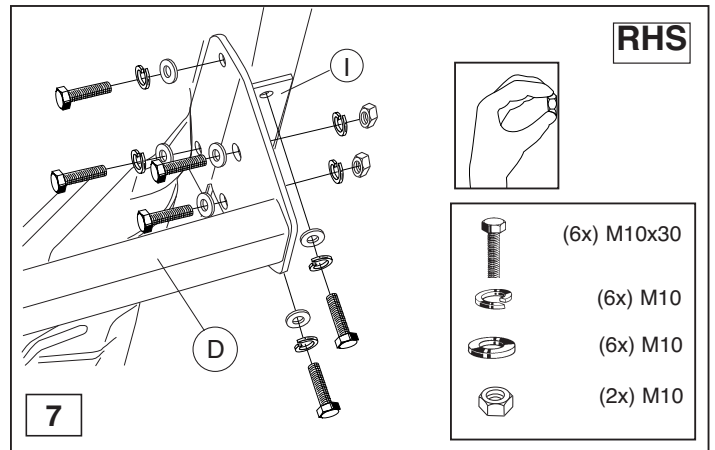
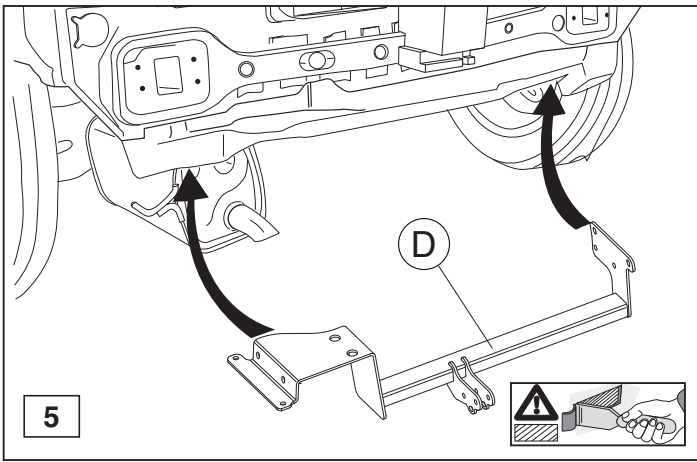
HINWEISE:

- * Die für das Fahrzeug zugelassene Anhängelast ist den Fahrzeug Unterlagen zu entnehmen. Bei Änderungen des Fahrzeuggewichtes muß die höchstzulässige Anhängelast gegebenenfalls aus dem D-Wert nachgerechnet werden. Auskunft hierüber kann Ihr Fachhändler oder der TÜV geben.
- * Elektrische Anlage gemäß StVZO anbringen.

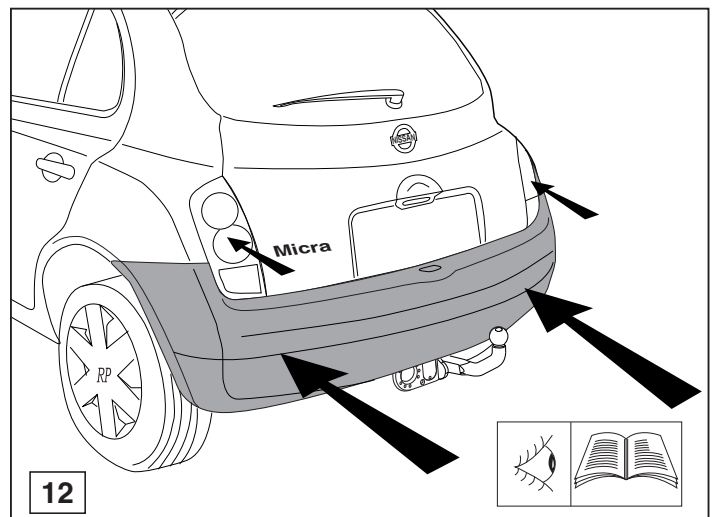
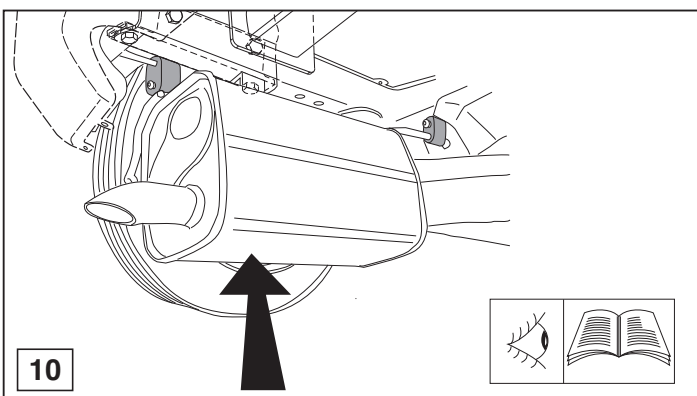
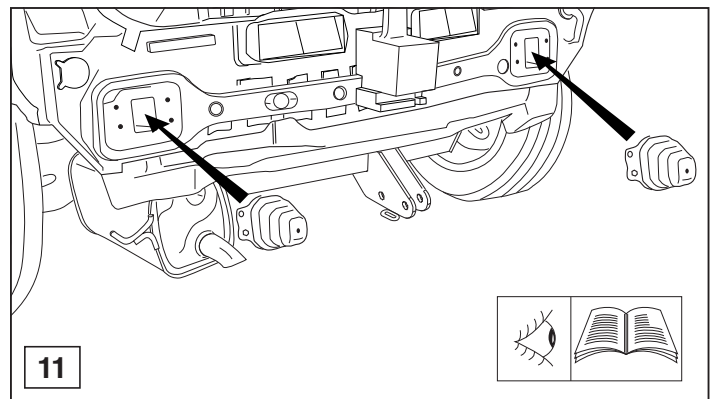
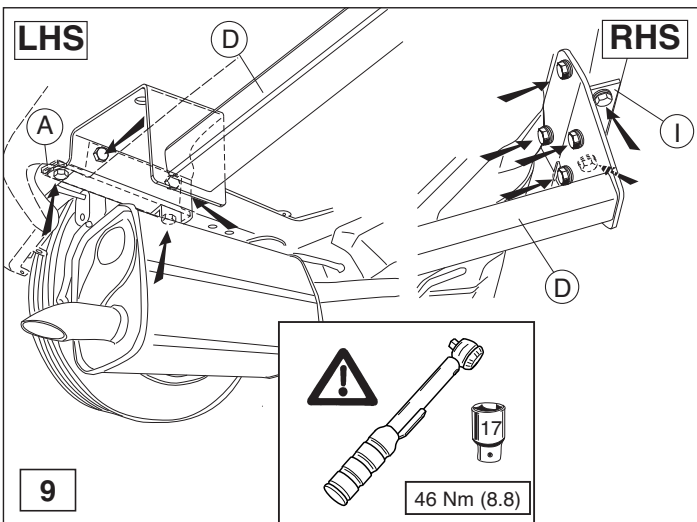
(10x) M10 46 Nm (8.8) 17	(2x) M12 self-locking 71 Nm (8.8) 19
--------------------------------	--

© 422370/18-12-2008/8





© 422370/18-12-2008/5



© 422370/18-12-2008/6