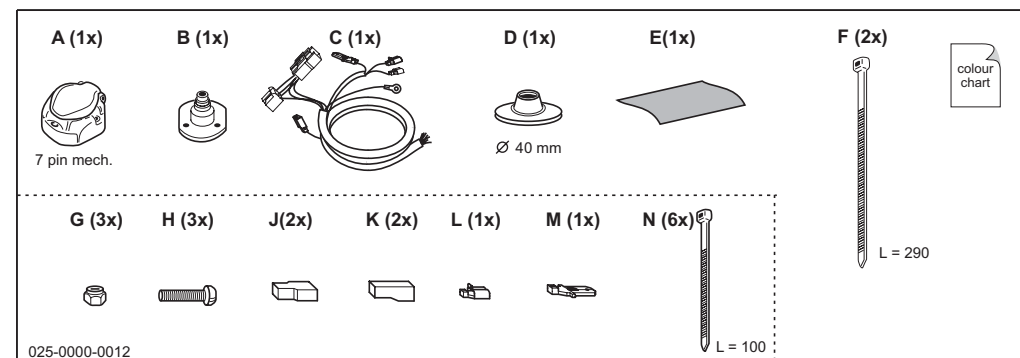


Art. no. Monoflex: 13.2017

Volvo 850, S70, V70 01/1997 - 01/2000

**S: Allmänna Instruktioner:**

- * Om bilen har en glödlampsvakt, som kontrollerar funktionen på bakljusen och/eller bromsljusen, måste kopplingen göras mellan glödlampsvaktens relä och kontakten. Med detta menas till reläets matarledning.
- * Använd om möjligt redan befintliga hål eller markerade punkter vid dragning av kablar. Ta bort grader och järnfilspån före montering av kabelgenomföring.
- Behandla de borrade hålen med rostskyddsmedel.
- * Dra kabeln på tillräckligt avstånd från avgassystemet och fäst den med buntband eller tape.
- * OBS! Ladda ej husvagnens batteri genom släpvagnskontakten. Bilsens elinstallationer kan då skadas.

DK: Almene oplysninger:

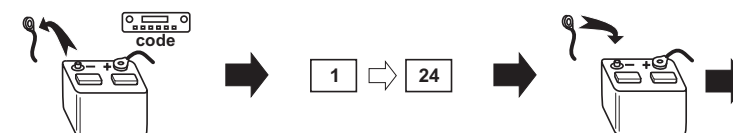
- * Hvis køretøjet er udstyret med computer-check-panel til kontrol af bremse- og positionslygterne, må stikdåsekablet altid tilsluttes før computeren. Overvågning af påhængskøretøjets lygter er ikke mulig. Det er ubetinget nødvendigt at iagt tage montageanvisningerne for at undgå ødelæggelse af kontrolelektronikken!
- * Ved udboring af bilproducentens afmærkede huller skal man være opmærksom på, at der skal køres og bores for, og grater skal fjernes før montage af kabel og gummigennemføring. **Boringerne skal behandles med rustbeskyttelse.**
- * Monter kablet i tilstrækkelig afstand fra udstødningen (brandfare) og vær opmærksom på, at kablet ikke kan falde ned.
- * **Advarsel!** Oplad aldrig køretøjets batteri via anhængerstikdåsen. Der kan ske ødelæggelse af den elektroniske styring.

SF: Yleisiä ohjeita:

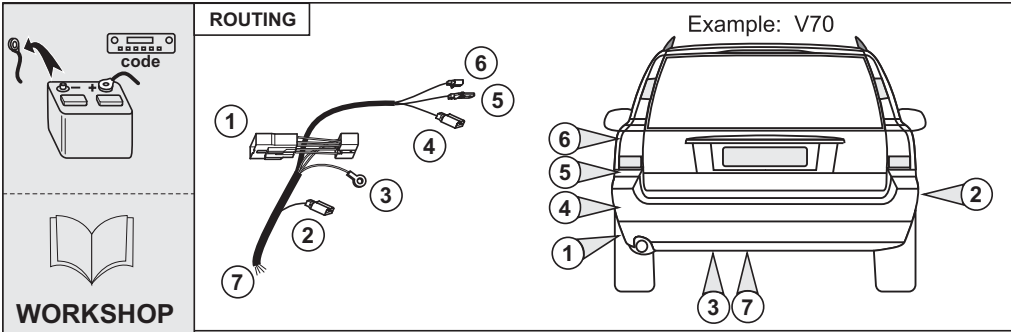
- * Jos autossa on hehkulankavahti, joka tarkistaa takavalojen tai jarruvalojen toiminnat, täytyy kytkentä tehdä hehkulankavahdin releen ja koskettimen välille. Tällä tarkoitetaan hehkulankavahdin releen sähkönsyöttöjohtoja. Hehkulankavahdin avulla ei voida valvoa peräkärryn tai perävaunun toimintaa.
- * Käytä valmiita reikiä autossa tai merkattuja pisteitä kaapelin vetämisessä. Poista jäysteet ja rautalastut ennen reikäkumitulpan asennusta. Käsittele poratut reiät ruosteestoaineella.
- * Asenna kaapeli riittäväälle etäisyydelle pakoputkesta ja kiinnitä se nippusiteellä.
- * HUOM! Älä lataa asuntovaunun akkua vetokoukun pistorasiasta. Auton sähkölaitteet voivat vahingoittua

GB: General instructions:

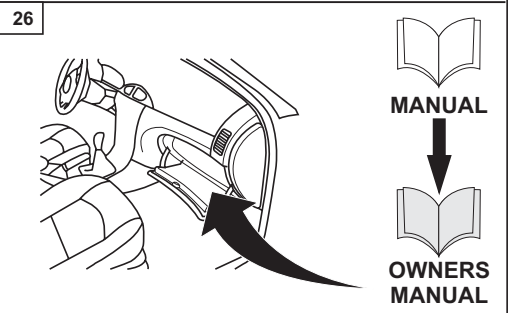
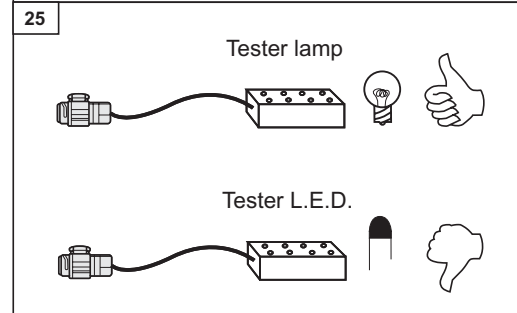
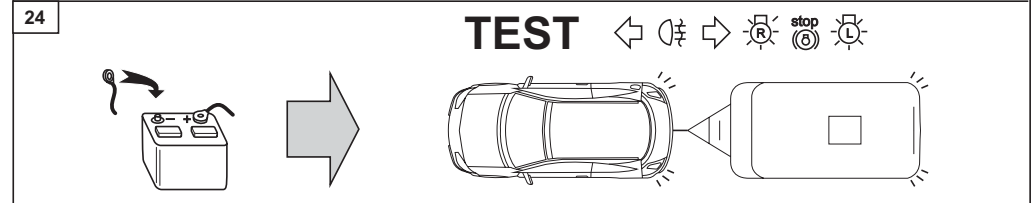
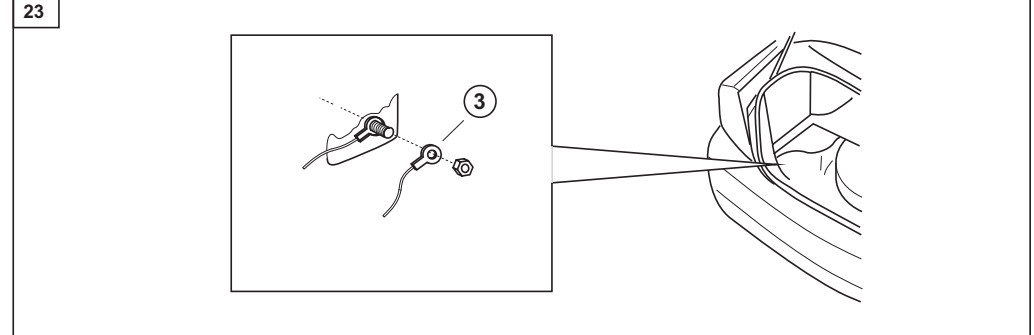
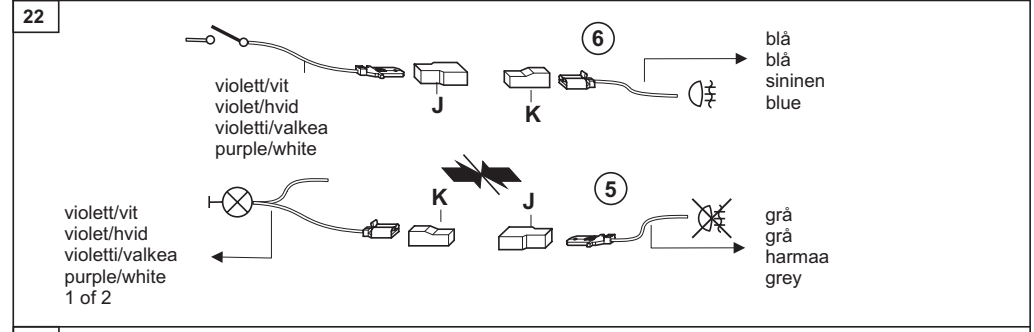
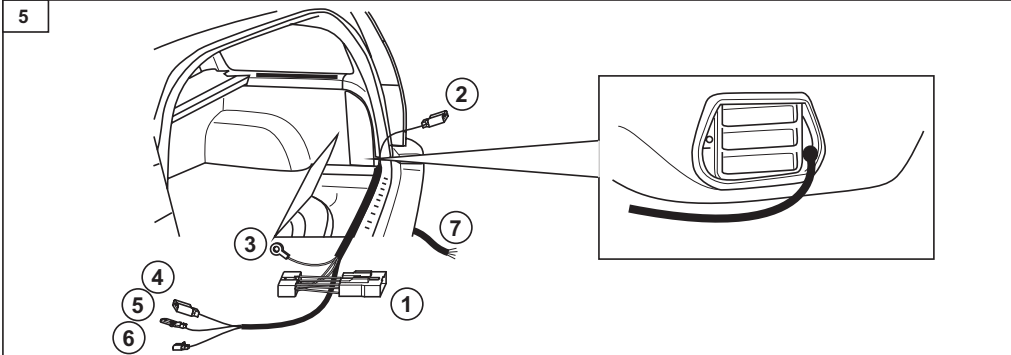
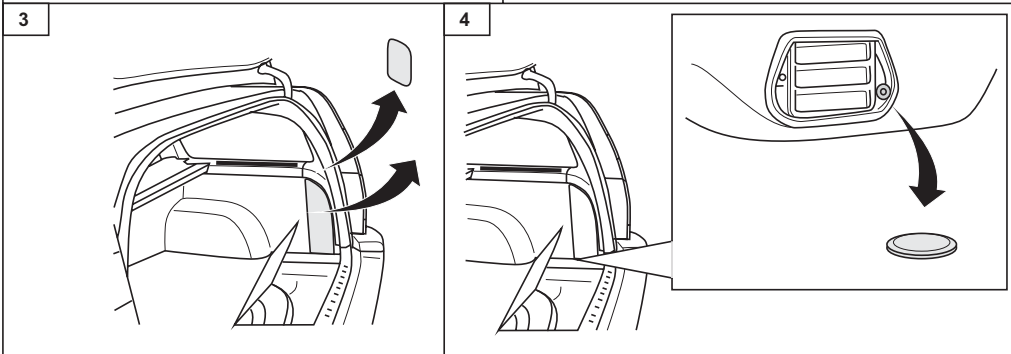
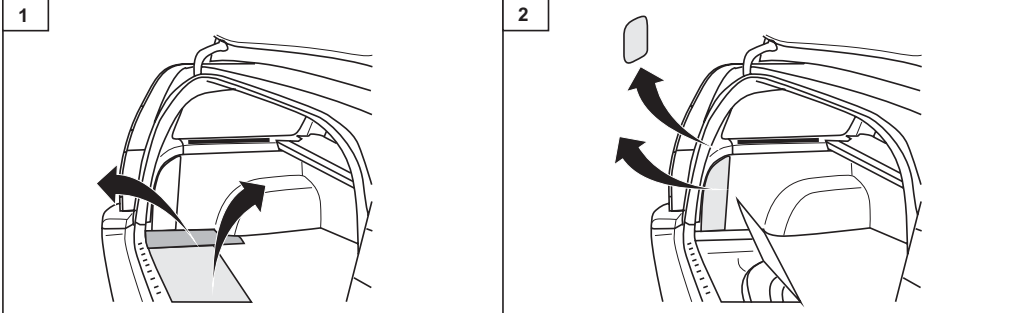
- * If the car has a light failure checker, which checks the functions of the tail and/or stop lights, the connections have to be made between checker relay and switches. This means to the supply wires of the relay.
- * Use, if possible, existing holes or marked points for leading the cable through the car body. Remove all swarf before mounting the grommet.
- Treat all drilled holes with primer or anti-corrosion treatment
- * Place cable at a right distance from the exhaust system and secure cable with cable ties or tape.
- * NOTE! Do not load the car battery with a battery charger through the trailer socket. Electronic installation of the car can be damaged.



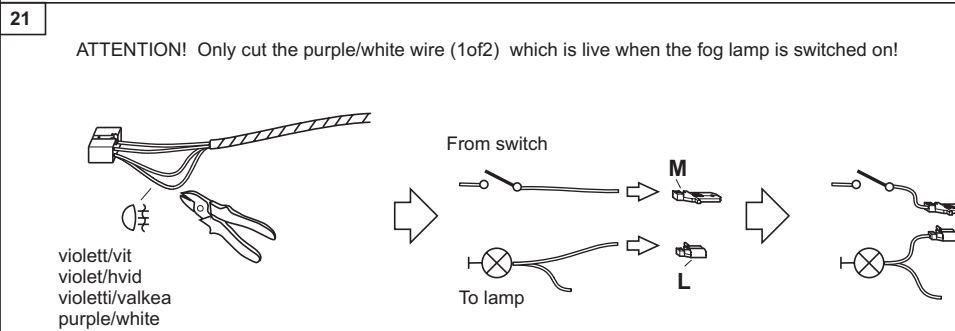
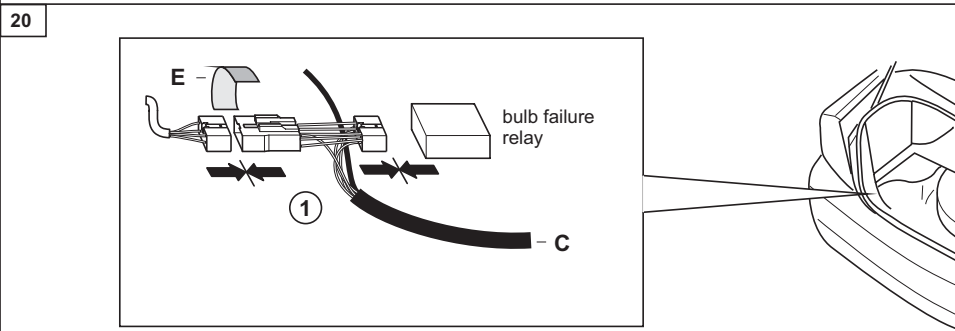
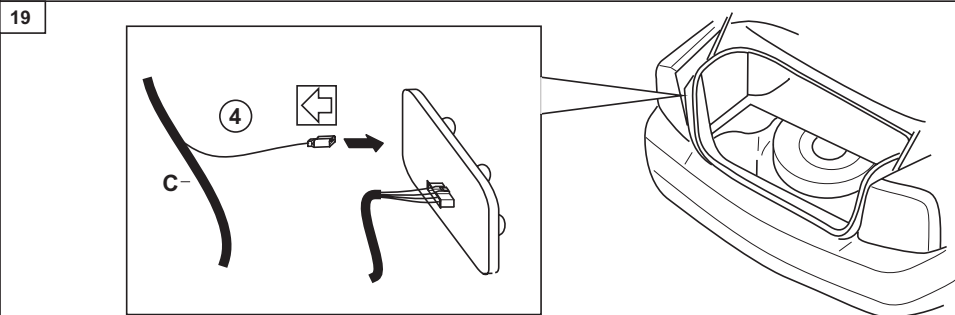
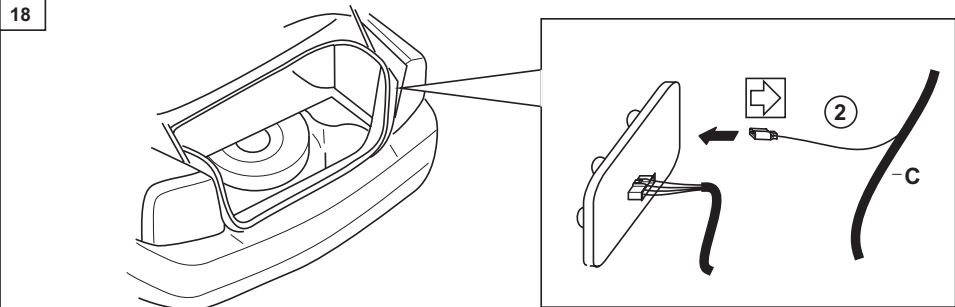
**Testa Funktioner!
Funktionstest!
Tarkasta toiminnat
sähköistyksen jälkeen!
Check the functions!**



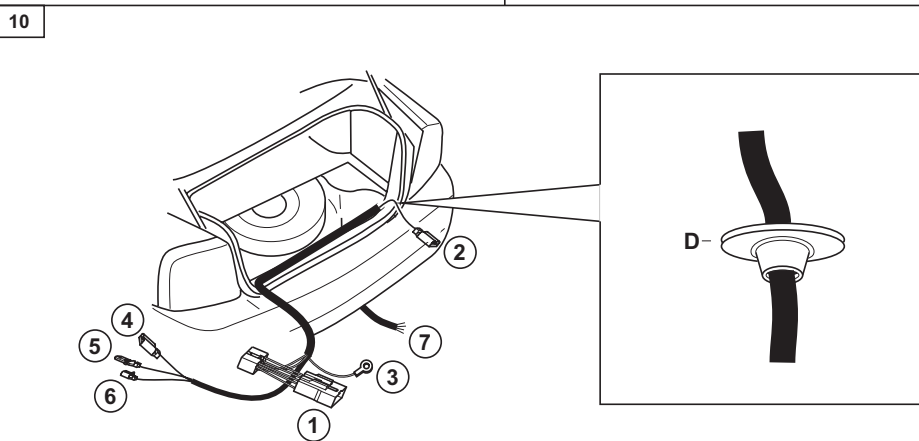
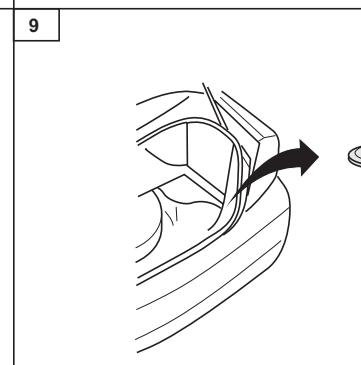
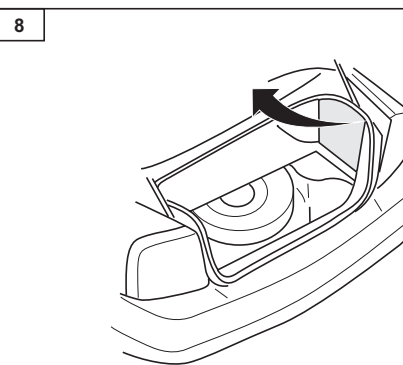
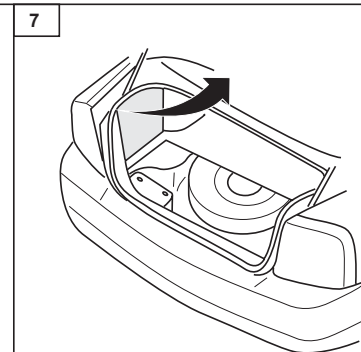
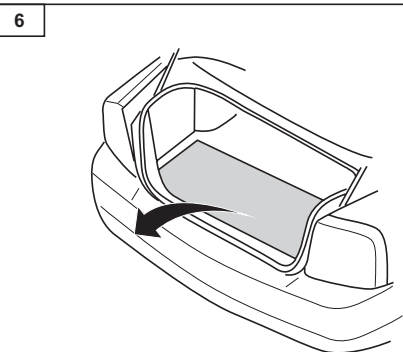
1 - 5 = ESTATE



18 - 23 = SEDAN

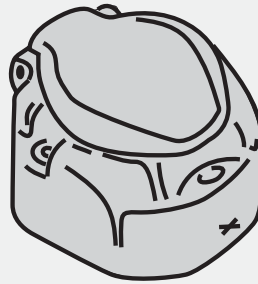


6 - 10 = SEDAN



ESTATE & SEDAN

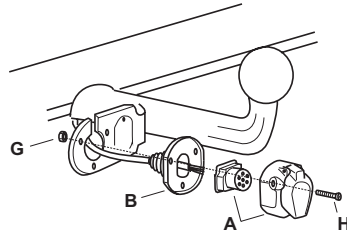
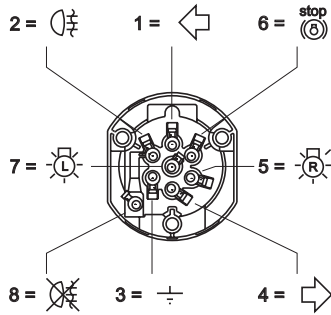
ATTENTION



Ø 5,5 mm



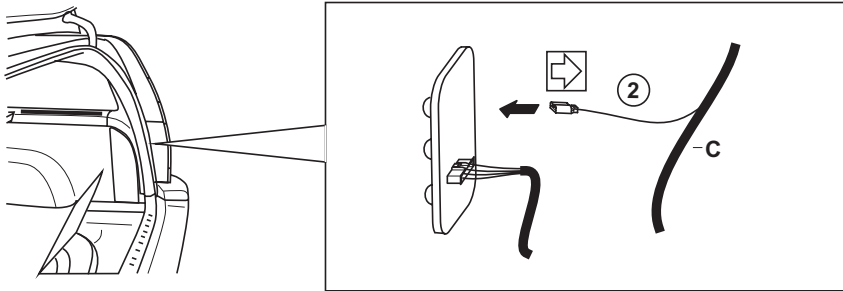
11



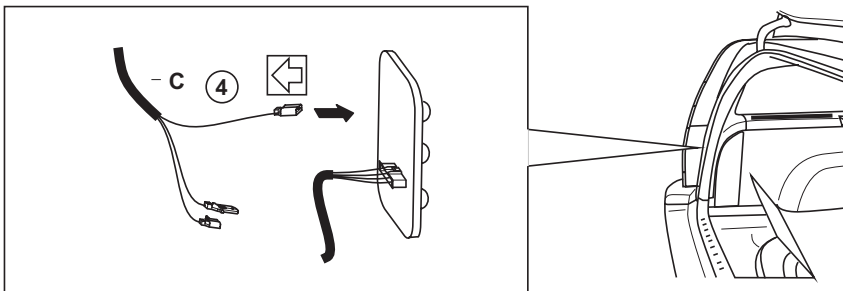
COLOUR CHART F

12 - 17 = ESTATE

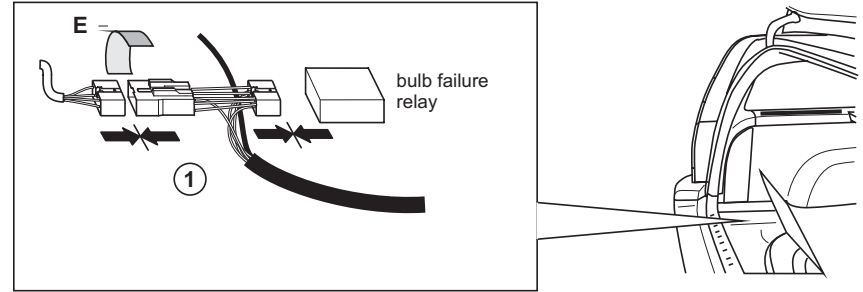
12



13

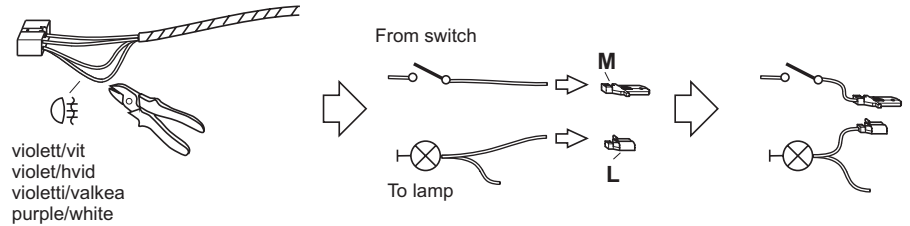


14

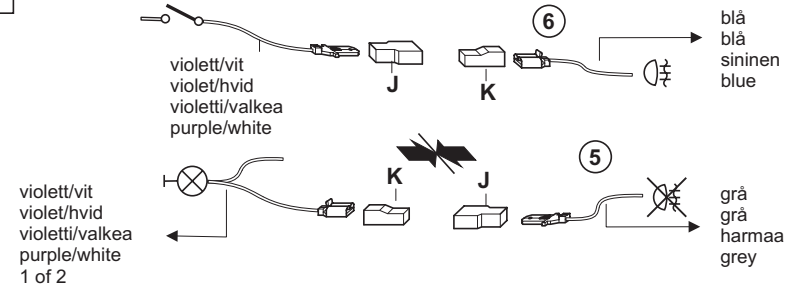


15

ATTENTION! Only cut the purple/white wire (1of2) which is live when the fog lamp is switched on!



16



17

