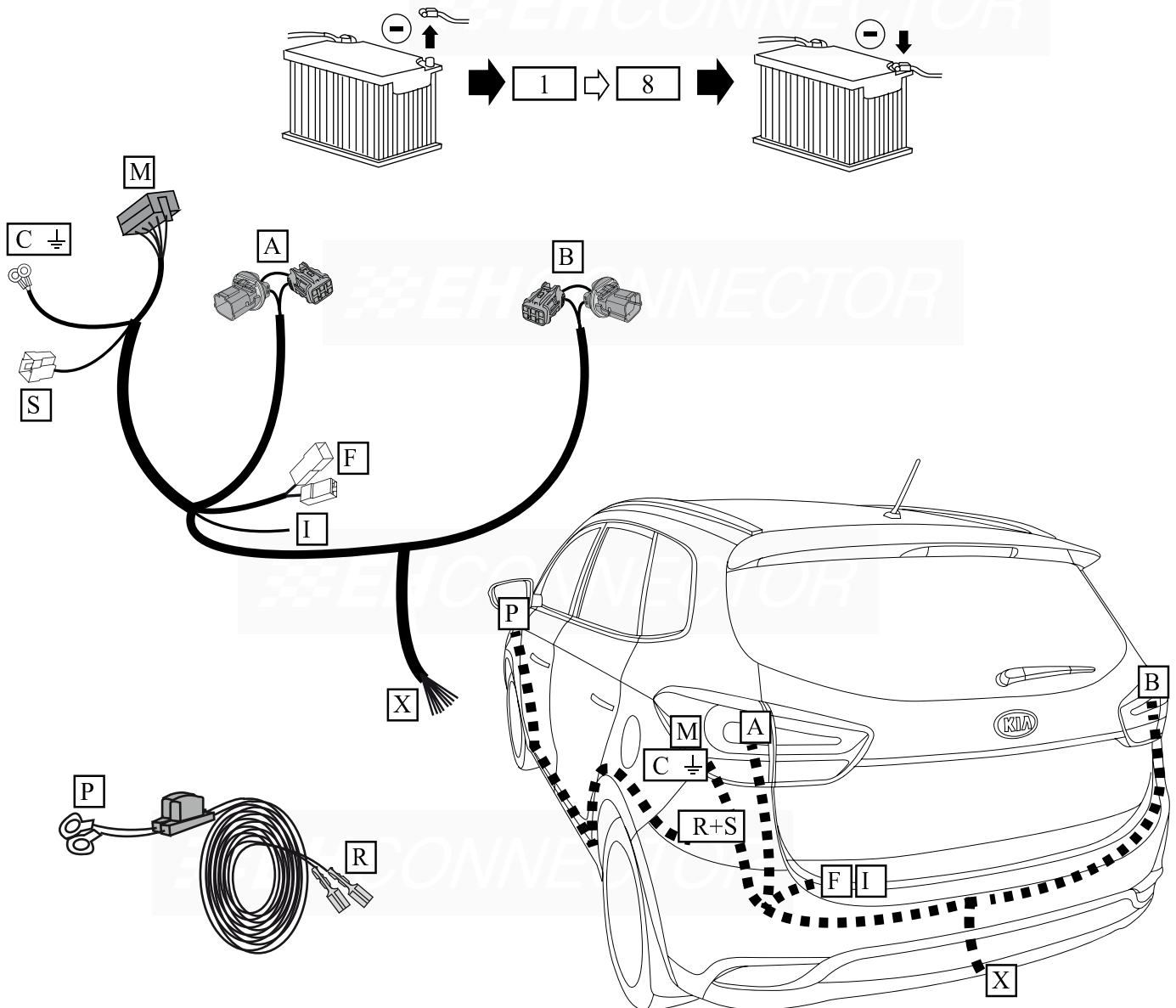


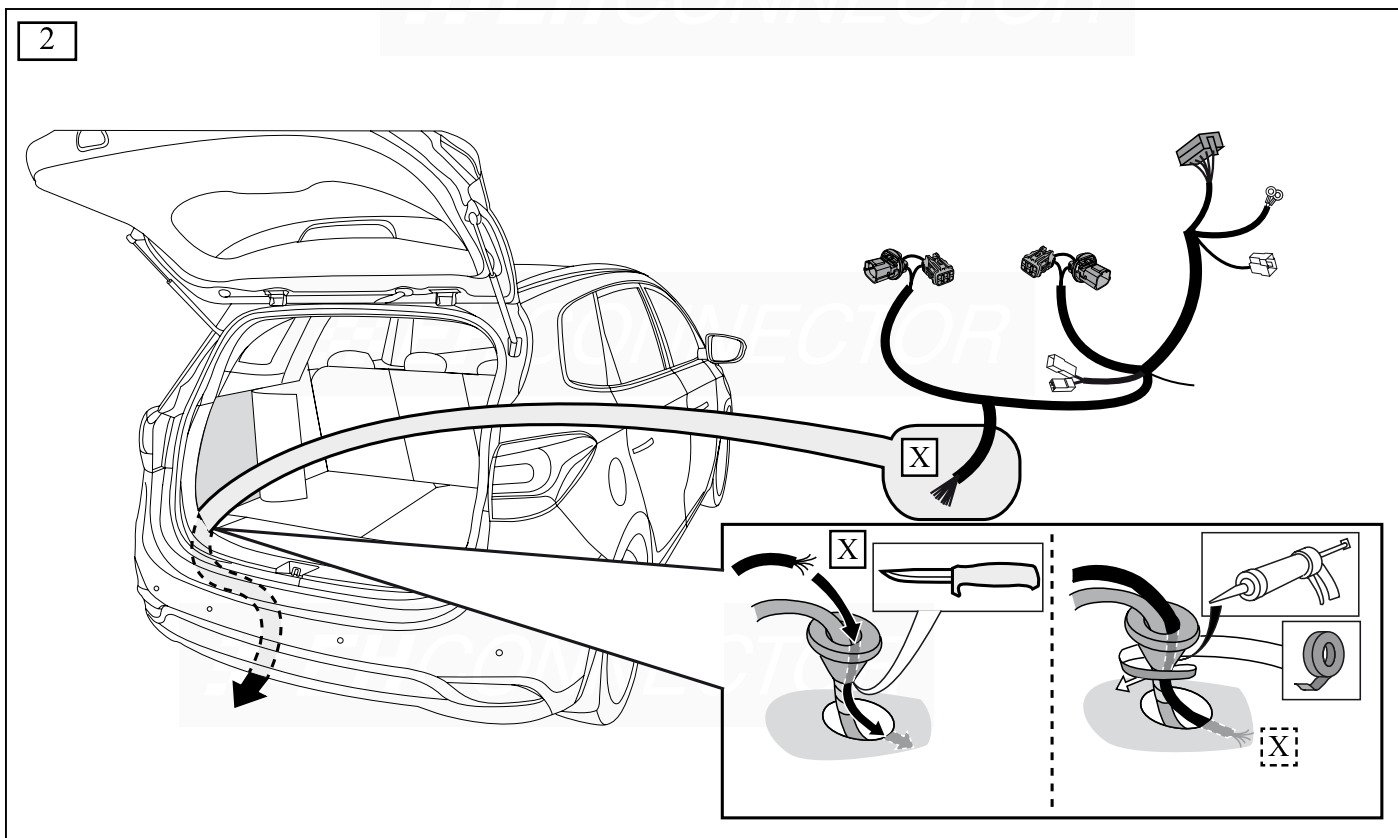
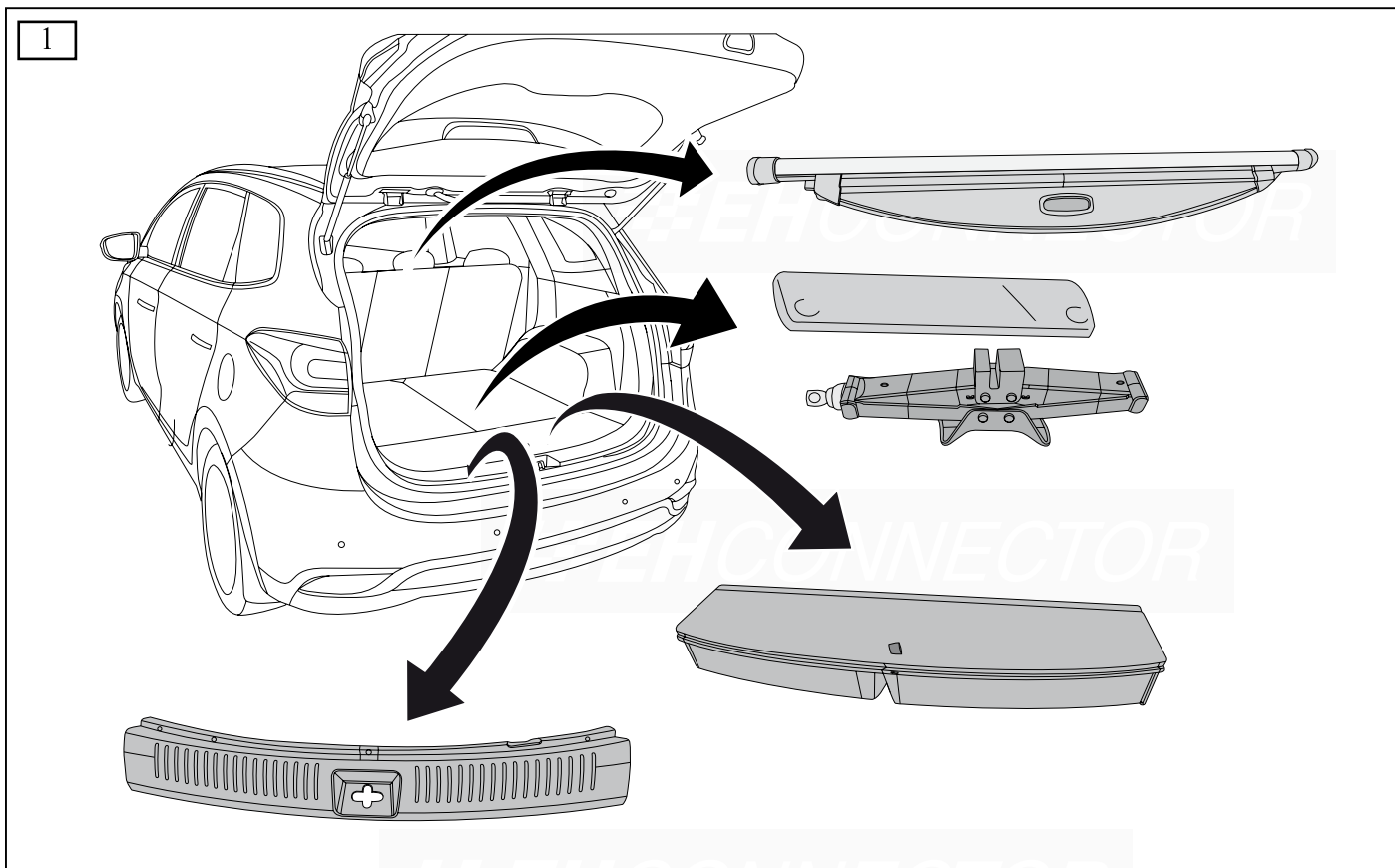
Kia Carens, 2013-

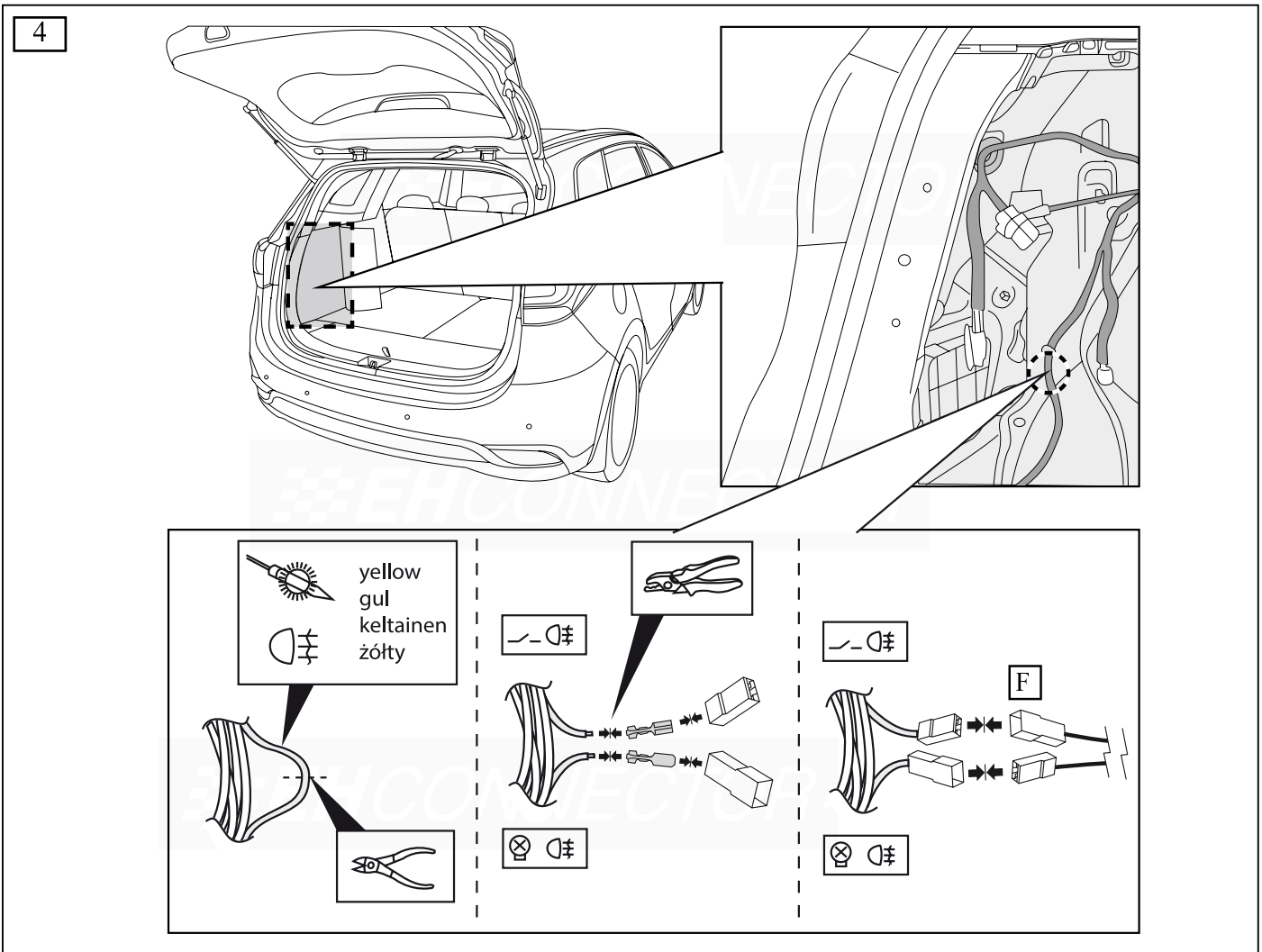
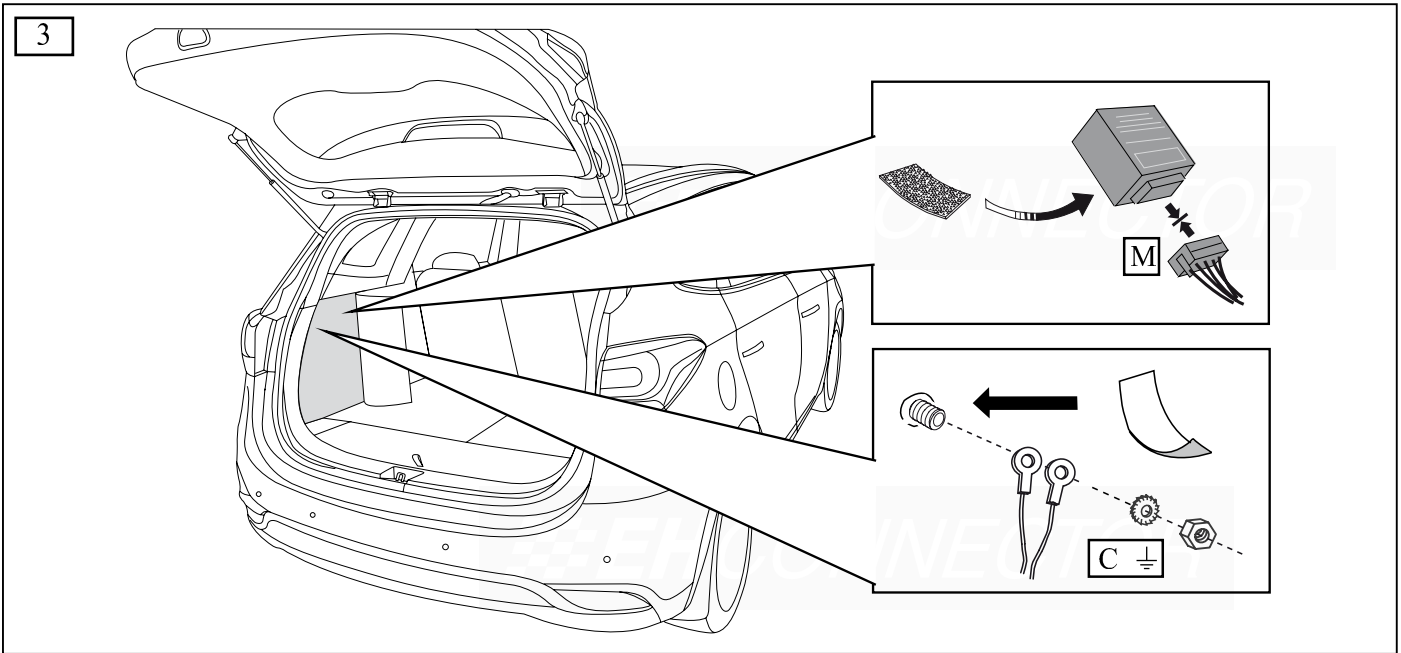
7-pol, med PDC-brytning

Nr: 35183

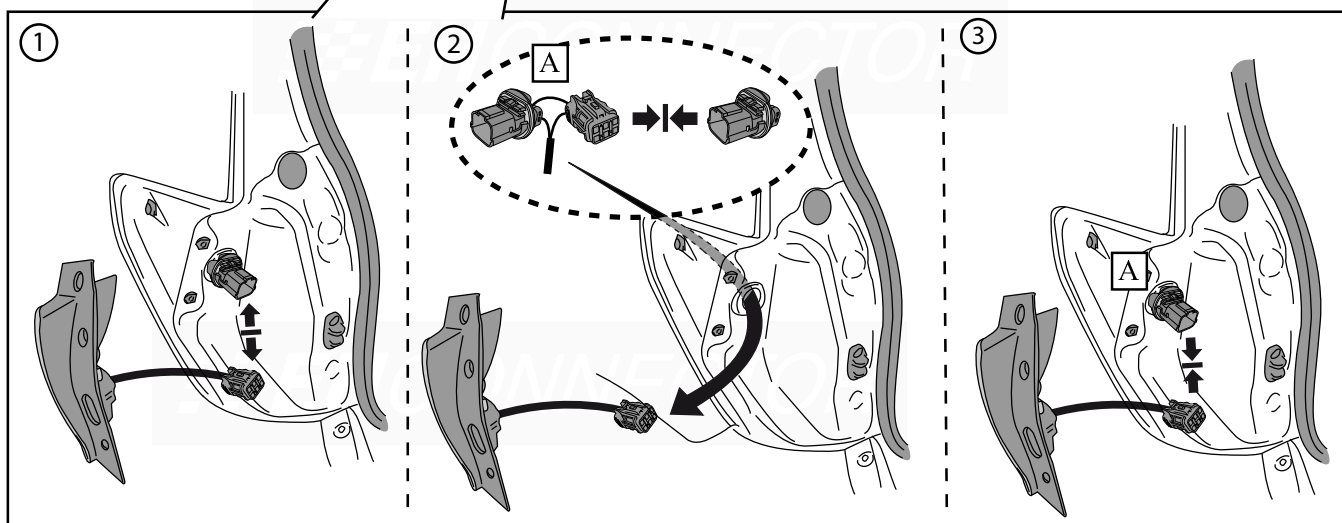
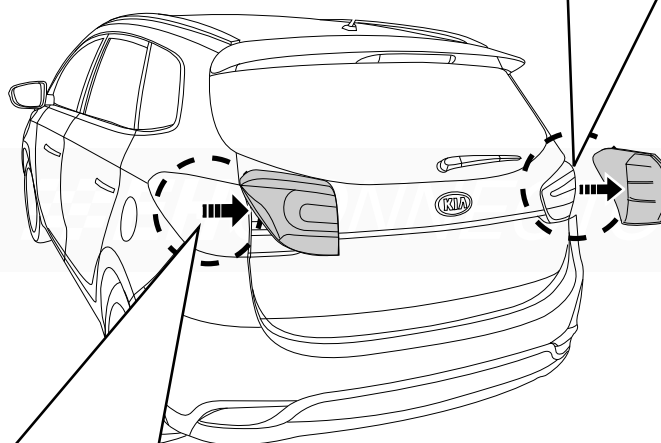
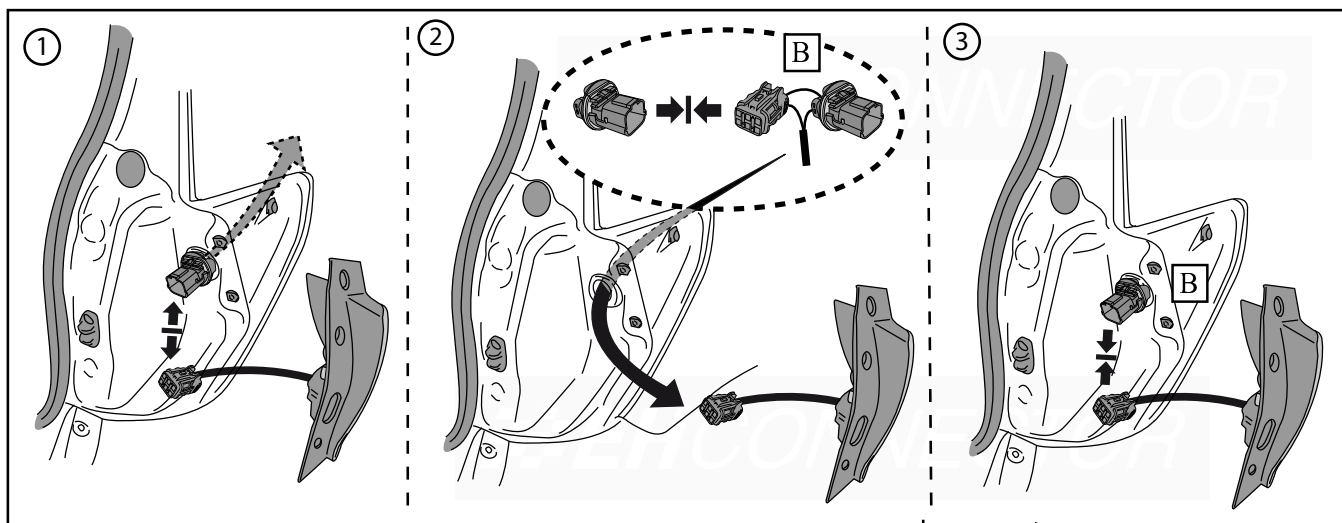
| | | | | | | | | | |
|--------------|-------------------|--------------|--------------------|-------------------------|--------------|--------------------|-----------------------|-----------------------|--------------|
| 1x | 1x | 1x | 1x | 1x | 1x | 2x | 10cm | 10cm | 50cm |
| | | | | | | | | | |
| Art.no.3779 | Art.no. 3500-0170 | Art.no. 3515 | Art.no. 3516 | Art.no. 3716 | Art.no. 3717 | Art.no. 9700-0006 | Art.no. 3530 | Art.no. 3531 | Art.no. 3584 |
| 1x | 1x | 1x | 1x | 3x | 3x | 3x | 6x | 6x | |
| | | | | | | | | | |
| Art.no.10000 | Art.no. 4093 | Art.no. 1092 | M6 Art.no. 1072 | M5 x 35 Art.no. 1031 | Art.no. 1091 | M5 Art.no. 1071 | L=140 Art.no. 6079 | L=186 Art.no. 6081 | |




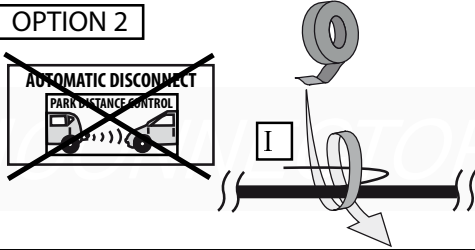


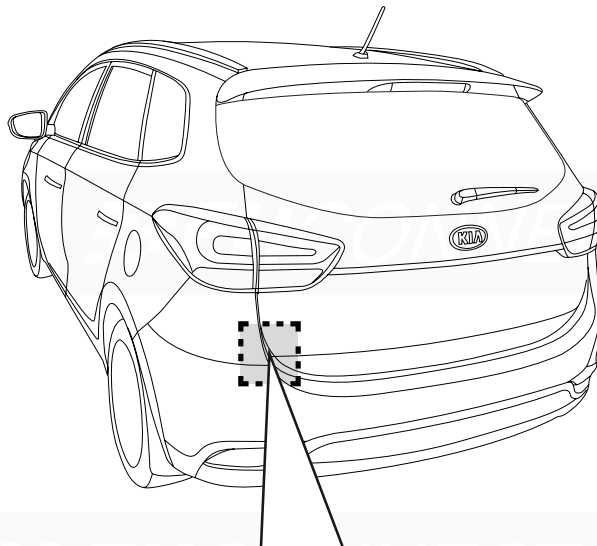


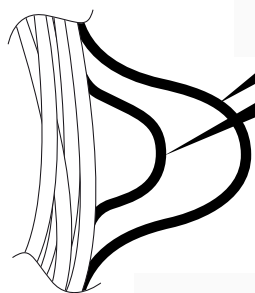
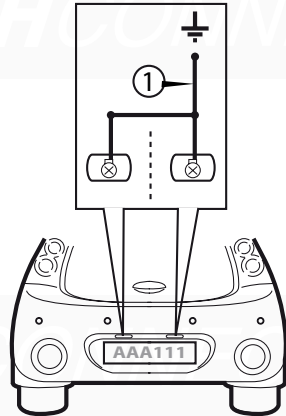
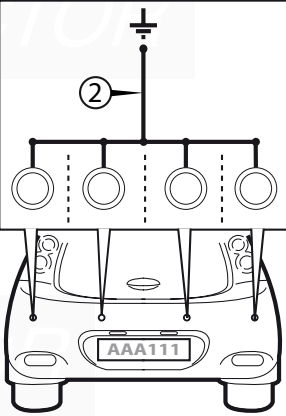
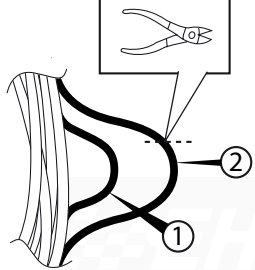

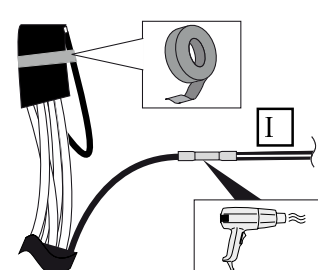
5



6

| | |
|--|--|
| <p>OPTION 1</p> <p>AUTOMATIC DISCONNECT</p> <p>PARK DISTANCE CONTROL</p>  <p>FOLLOW INSTRUCTIONS BELOW</p> | <p>OPTION 2</p> <p>AUTOMATIC DISCONNECT</p> <p>PARK DISTANCE CONTROL</p>  |
|--|--|



| | | |
|---|--|---|
|  | <p>black svart sort musta czarny</p>  |  |
|  |  <p>brown/white brun/vit brun/hvit ruskea/valkoinen brązowy/biały</p> |  |

7

| | | GB | S | N | DK | FIN | POL |
|---|-------|--------|-------|-------|------|-----------|-----------|
| ← | 1/L | yellow | gul | gul | gul | keltainen | żółty |
| ⊖ | 2/54g | blue | blå | blå | blå | sininen | niebieski |
| ⊕ | 3/31 | white | vit | hvit | hvid | valkoinen | biały |
| → | 4/R | green | grön | grønn | grøn | vihreä | zielony |
| ⊙ | 5/58R | brown | brun | brun | brun | ruskea | brązowy |
| ⊙ | 6/54 | red | röd | rød | rød | punainen | czerwony |
| ⊙ | 7/58L | black | svart | sort | sort | musta | czarny |

8