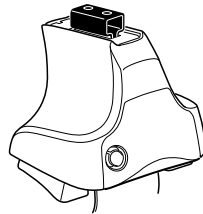
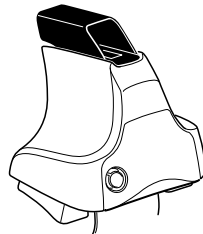
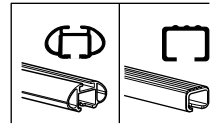


# Kit 1256

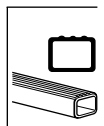
TOYOTA Noah, 5-dr MPV, 01–  
TOYOTA Voxy, 5-dr MPV, 01– (Asia)



754 Rapid System  
480R Rapid Traverse (North America)



480 Traverse (North America)



**754 Rapid System**  
**480R Rapid Traverse (North America)**

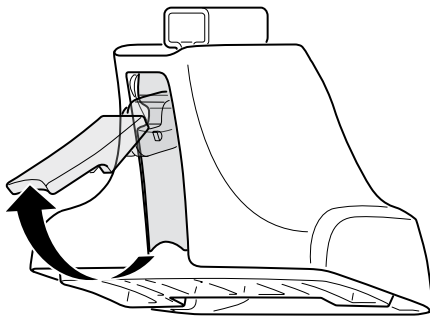
**754 Rapid System**  
**480R Rapid Traverse (North America)**

**480 Traverse (North America)**

**(North America)**

**432 x 2**  
**433 x 2**  
**06 x 4**  
**16 mm x 4**  
**x 4**  
**x 1**  
**x 1**

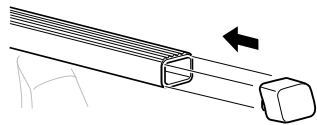
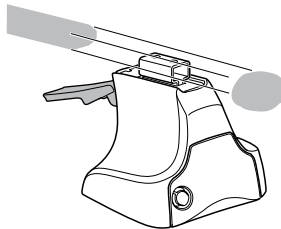
1



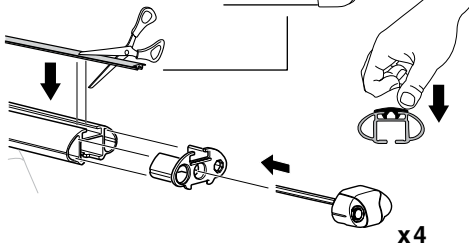
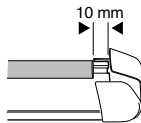
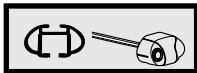
2



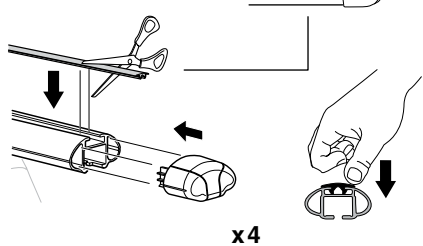
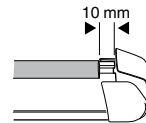
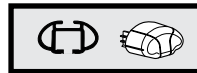
754 Rapid System  
480R Rapid Traverse  
(North America)



x4



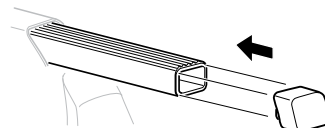
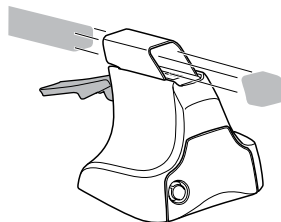
x4



x4

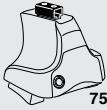


480 Traverse  
(North America)

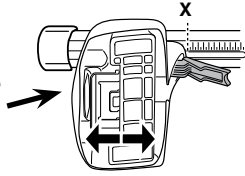


x4

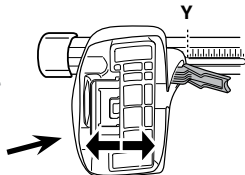
**3**



**754** Rapid System



	X
<b>TOYOTA Noah, 5-dr MPV, 01-</b>	<b>35</b>
<b>TOYOTA Voxy, 5-dr MPV, 01- (Asia)</b>	<b>35</b>



	Y
<b>TOYOTA Noah, 5-dr MPV, 01-</b>	<b>33,5</b>
<b>TOYOTA Voxy, 5-dr MPV, 01- (Asia)</b>	<b>33,5</b>

**3**

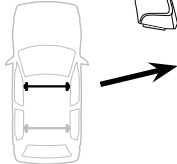


**480R** Rapid Traverse

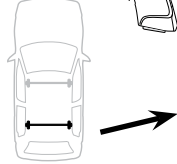


**480** Traverse

**(North America)**

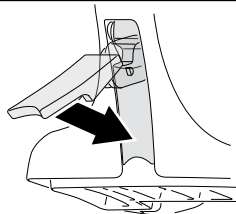


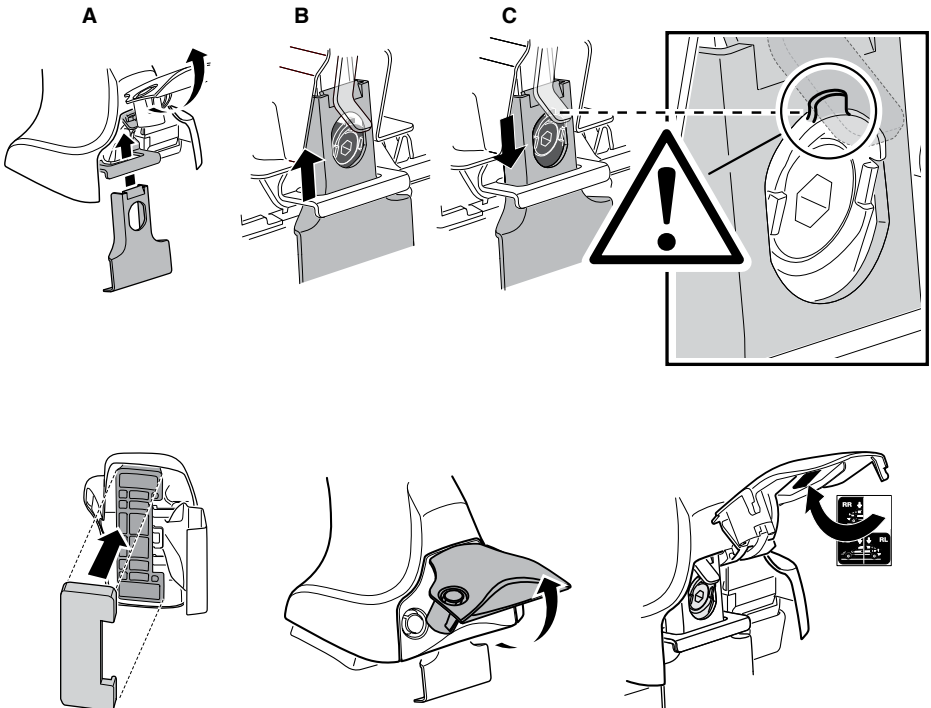
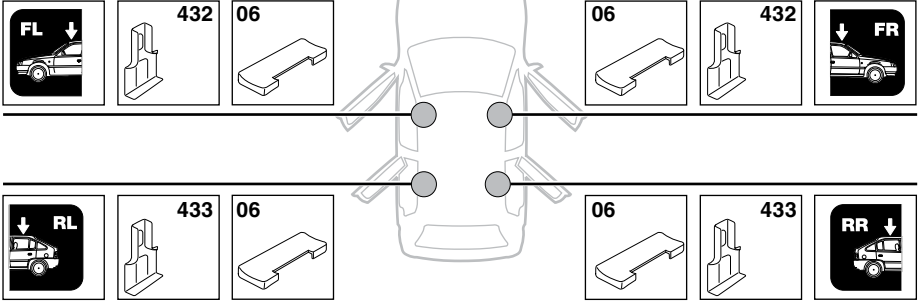
	X inch	X mm
<b>TOYOTA Noah, 5-dr MPV, 01-</b>	<b>39 <sup>3</sup>/<sub>8</sub> "</b>	<b>1001 mm</b>
<b>TOYOTA Voxy, 5-dr MPV, 01- (Asia)</b>	<b>39 <sup>3</sup>/<sub>8</sub> "</b>	<b>1001 mm</b>



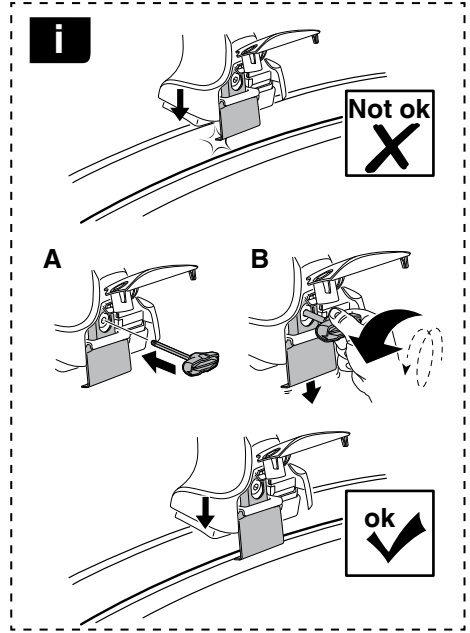
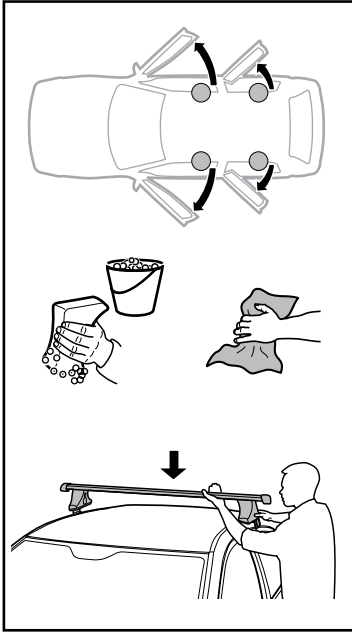
	Y inch	Y mm
<b>TOYOTA Noah, 5-dr MPV, 01-</b>	<b>38 <sup>7</sup>/<sub>8</sub> "</b>	<b>986 mm</b>
<b>TOYOTA Voxy, 5-dr MPV, 01- (Asia)</b>	<b>38 <sup>7</sup>/<sub>8</sub> "</b>	<b>986 mm</b>

**4**

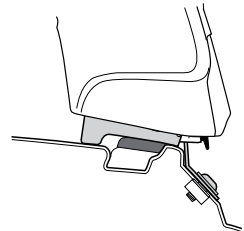
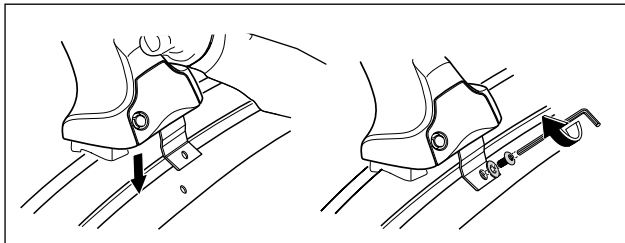
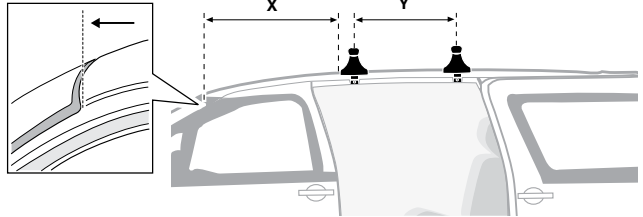
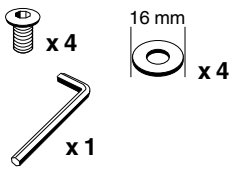


**5****TOYOTA Noah, 5-dr MPV, 01–**  
**TOYOTA Voxy, 5-dr MPV, 01– (Asia)**

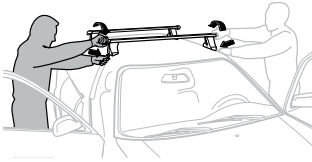
6



	X mm	Y mm	X inch	Y inch
TOYOTA Noah, 5-dr MPV, 01-	190 mm	650 mm	7 1/2"	25 5/8"
TOYOTA Voxy, 5-dr MPV, 01- (Asia)	190 mm	650 mm	7 1/2"	25 5/8"



7



<b>GB/US</b>	Tighten alternately
<b>D</b>	Die Schrauben abwechselnd anziehen
<b>F</b>	Serrer alternativement chaque côté
<b>NL</b>	Afwisselend aan de linker- en de rechterkant aandraaien
<b>I</b>	Alternare il serraggio delle viti
<b>E</b>	Apertar alternativamente
<b>PT</b>	Aperte alternadamente
<b>S</b>	Dra åt växelvis
<b>FIN</b>	Kierrä vuorotellen
<b>EST</b>	Pinguldage vaheldumisi
<b>LAT</b>	Pielveiciet pamišus
<b>LIT</b>	Užsukinėkite pakaitomis
<b>PL</b>	Śruby dokręcaj naprzemiennie
<b>RU</b>	Затягивайте попеременно

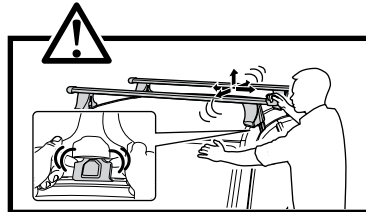
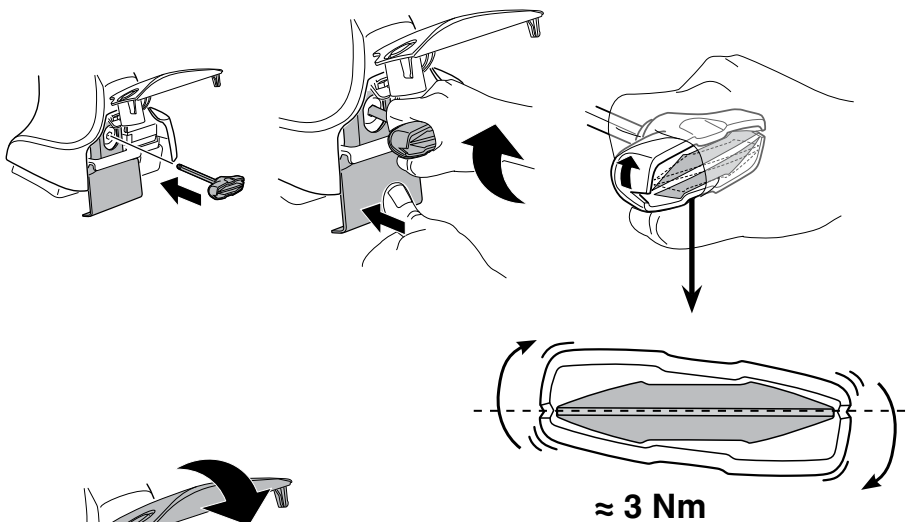
<b>CZ</b>	Pokręťta bagažníka dokręcaj naprzemiennie.
<b>SK</b>	Dofahajte striedavo
<b>SLO</b>	Privijajte izmenično.
<b>HR</b>	Naizmjenočno zategnite
<b>HU</b>	Egymástól függetlenül szorítandó
<b>GR</b>	Σφιγίγτες εναλλάξ
<b>TR</b>	Dönüşümlü sıkın

**中文** 交替拧紧

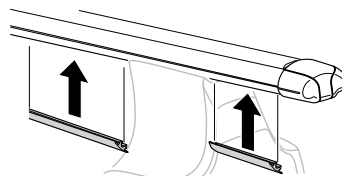
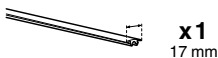
**한국어** 번갈아 가며 조이십시오.

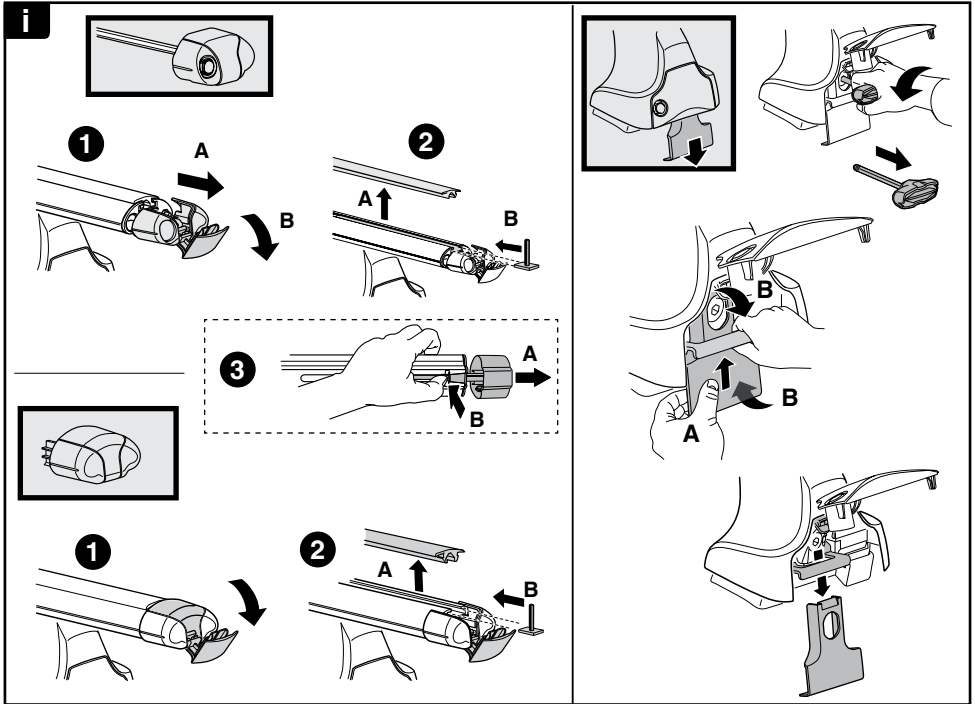
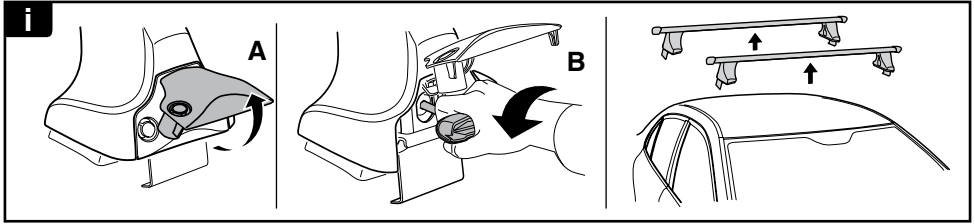
**日本語** 交互に締め付けてください。

**ไทย** ชันในแบบสลับ

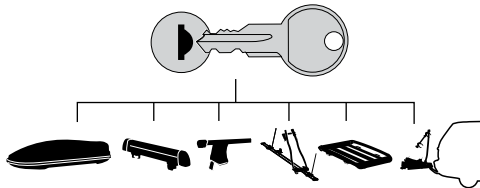


8





**THULE**  
SWEDEN  
**ONE  
KEY  
SYSTEM**



**544** (x4)

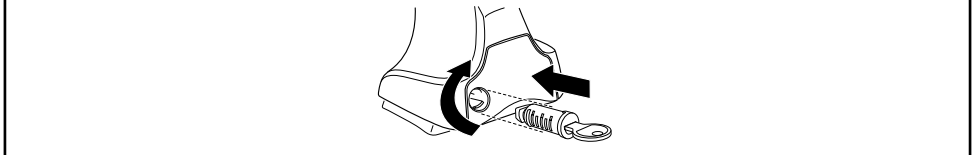
**596** (x6)

**588** (x8)

NA **510** (x10)

EUR **452** (x12)

ASIA



WW ▶ Thule Sweden AB, Box 69, 330 33 Hillerstorp, SWEDEN  
NA ▶ Thule Inc., 42 Silvermine Road, Seymour, Connecticut 06483, USA

info@thule.com  
customer.service@thule.com

www.thule.com

503-1256-02