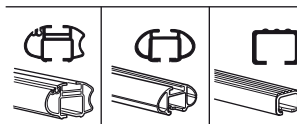
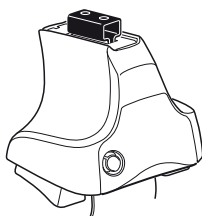


Kit 1098

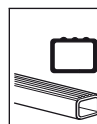
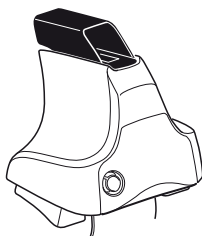
HONDA Logo, 3-dr Hatchback, 96-01

HONDA Logo, 5-dr Hatchback, 96-01

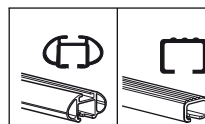
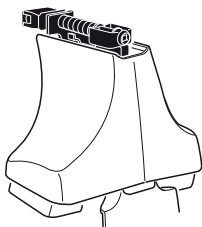
480R
754



480



750



xx kg
 xx lbs + 7 kg / 15,4 lbs = **Max. 75kg**
 3 kg / 6,6 lbs = **Max. 165 lbs**

80 km/h 130 km/h
 50 Mph 80 Mph
 40 km/h 25 Mph
km/h Mph

THULE + **Kit XXXX**

x1 x4 x4 x4 x4
480R/754

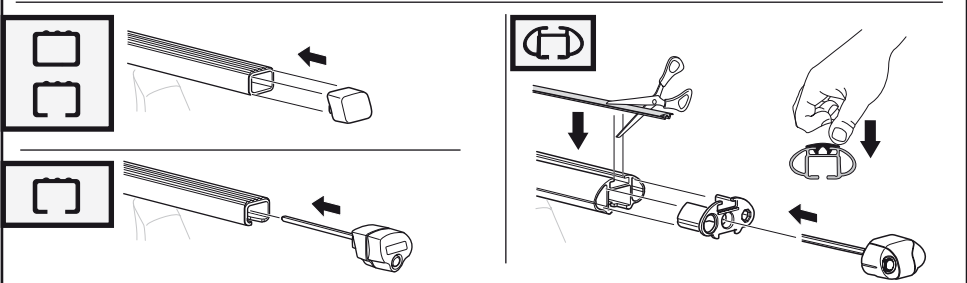
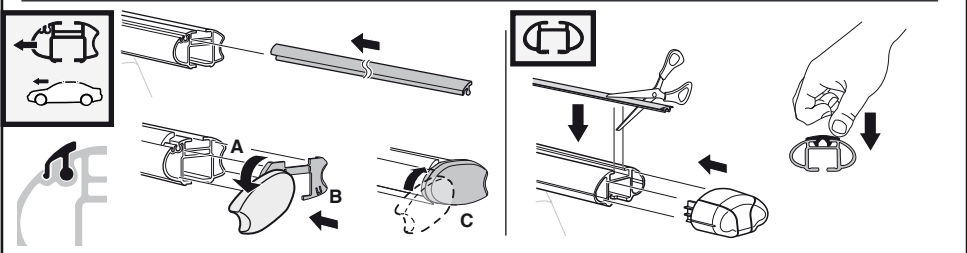
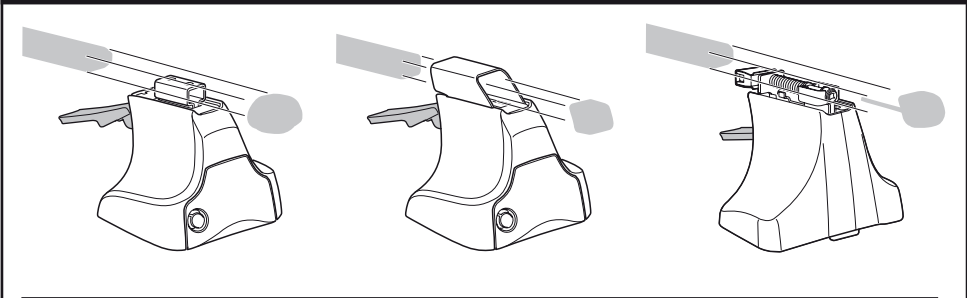
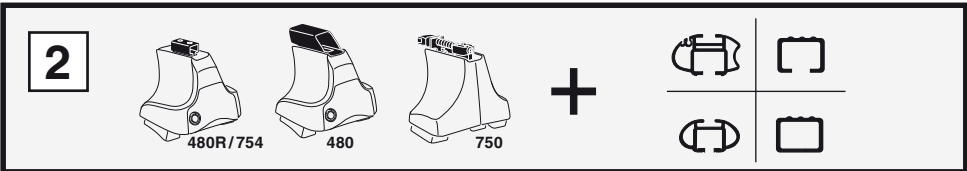
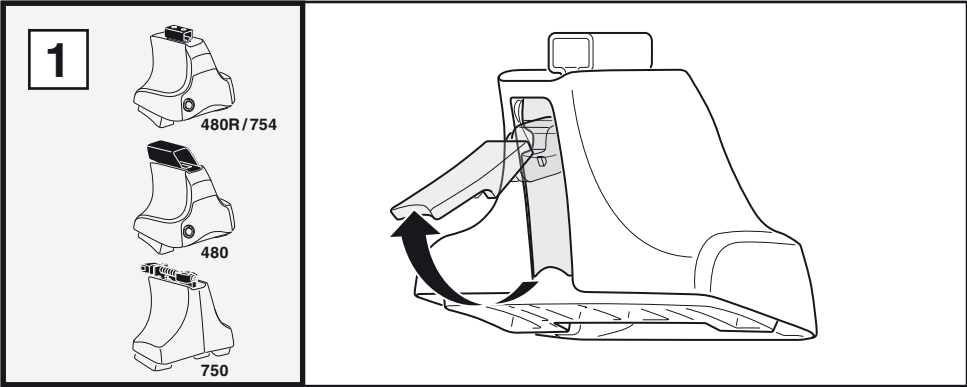
x1 x4 x4 x4
480

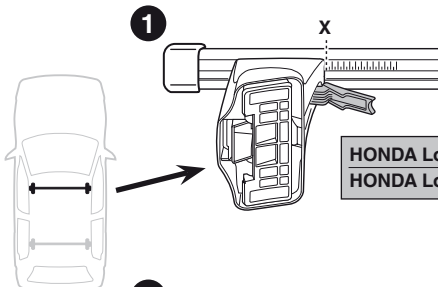
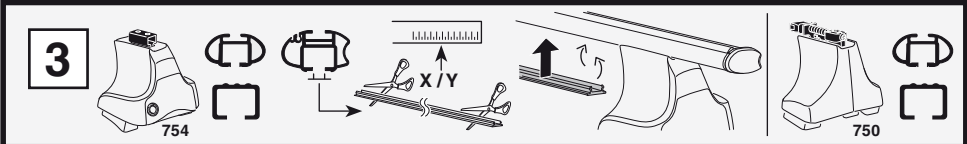
x1 x4 x4
750

x2	x2	x2	x2	x2
x2		x2	x2	
x2		x4		
x4		x4		

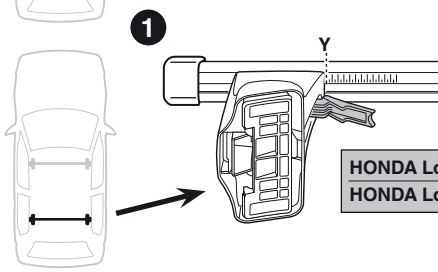
150 x 4 **07** x 4 x 1

Kit

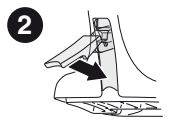
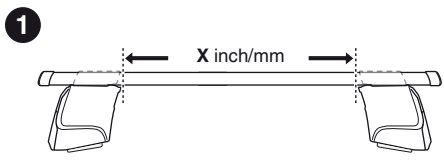
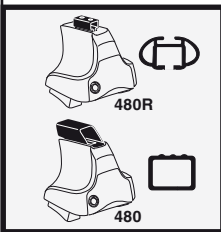




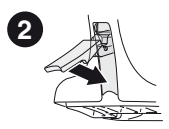
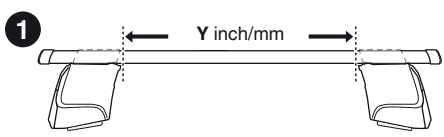
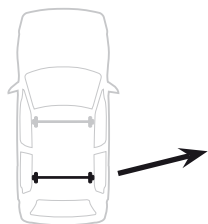
	X
HONDA Logo, 3-dr Hatchback, 96-01	25
HONDA Logo, 5-dr Hatchback, 96-01	24,5



	Y
HONDA Logo, 3-dr Hatchback, 96-01	21,5
HONDA Logo, 5-dr Hatchback, 96-01	21



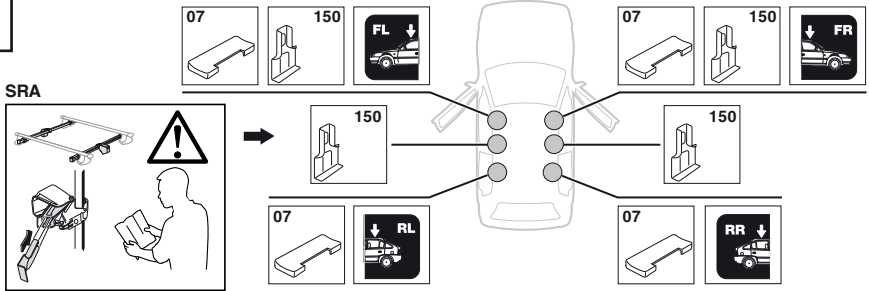
	X inch	X mm
HONDA Logo, 3-dr Hatchback, 96-01	35 1/2"	901 mm
HONDA Logo, 5-dr Hatchback, 96-01	35 1/4"	896 mm



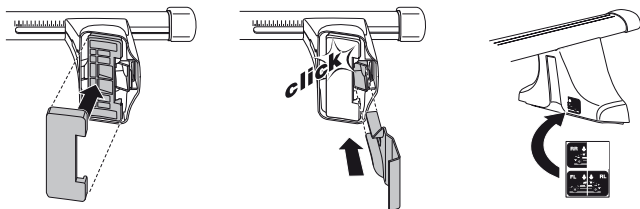
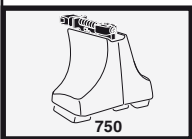
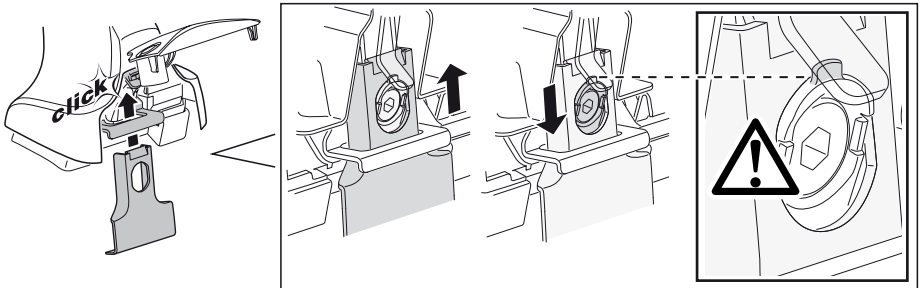
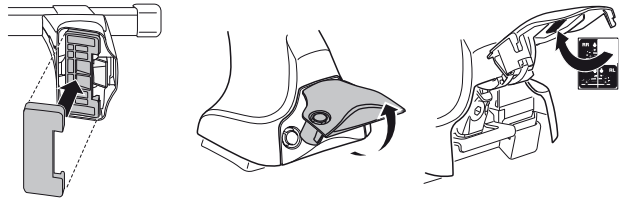
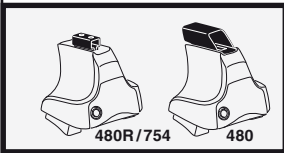
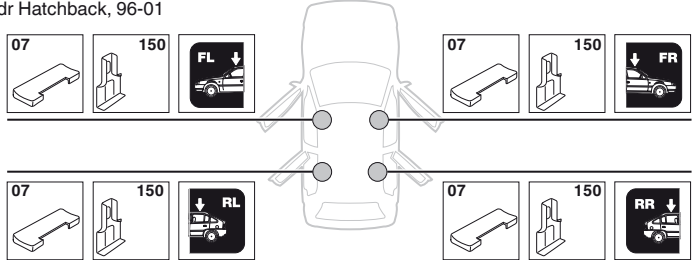
	Y inch	Y mm
HONDA Logo, 3-dr Hatchback, 96-01	34 1/8"	866 mm
HONDA Logo, 5-dr Hatchback, 96-01	33 7/8"	861 mm

HONDA Logo, 3-dr Hatchback, 96-01

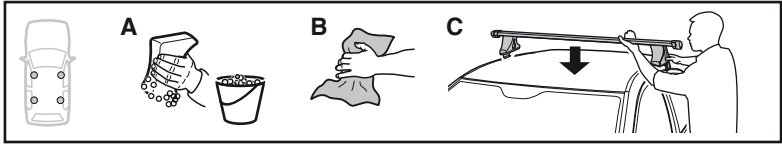
4



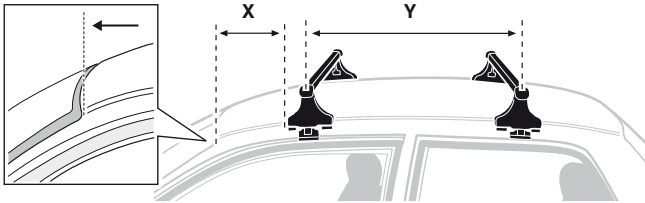
HONDA Logo, 5-dr Hatchback, 96-01



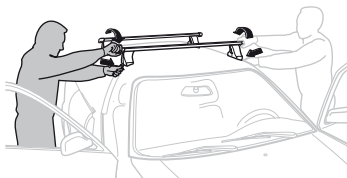
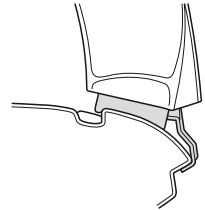
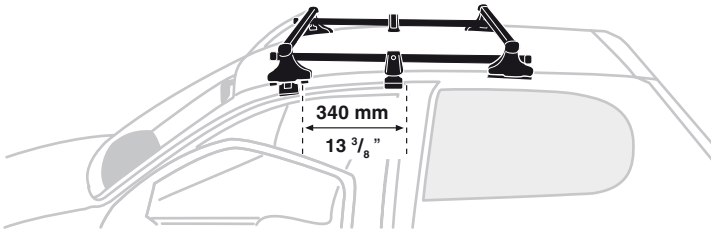
5



	X mm	Y mm	X inch	Y inch
HONDA Logo, 3-dr Hatchback, 96-01	300 mm	700 mm	11 ⁶ / ₈ "	27 ¹ / ₂ "
HONDA Logo, 5-dr Hatchback, 96-01	320 mm	700 mm	12 ⁵ / ₈ "	27 ¹ / ₂ "



HONDA Logo, 3-dr Hatchback, 96-01



GB/US Tighten alternately

D Die Schrauben abwechselnd anziehen

F Serrer alternativement chaque côté

NL Afwisselend aan de linker- en de rechterkant aandraaien

I Alternare il serraggio delle viti

E Serrare alternativamente

PT Aperte alternadamente

S Dra åt växelvis

FIN Kierrä vuorotellen

EST Pinguldage vaheldumisi

LAT Pielvelciēt pamīšus

LIT Užsukinėkite pakaitomis

PL Śruby dokręcaj naprzemiennie

RU Затягивайте попеременно

CZ Pokręťta bagažníka dokręcaj dokręcaj naprzemiennie.

SK Doťahujte striedavo

SLO Privijajte izmenično.

HR Naizmjenično zategnite

HU Egymástól függetlenül szorítandó

GR Σφιγγετε εναλλάξ

TR Dönüşümlü sıkın

中文 交替拧紧

한국어 번갈아 가며 조이십시오.

日本語 交互に締め付けてください。

ไทย ชั้โน้แบบสลับ

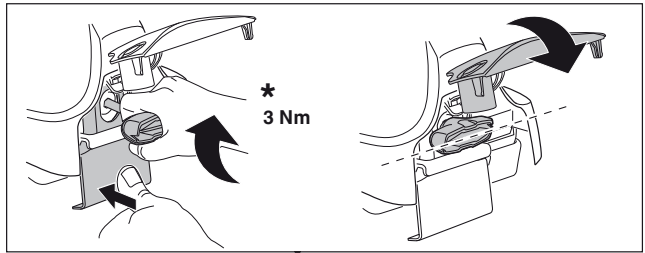
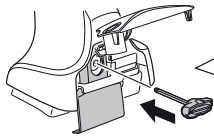
6



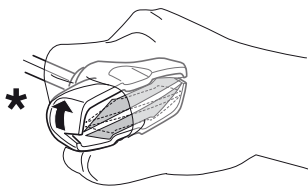
480R/754



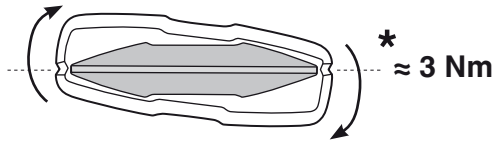
480



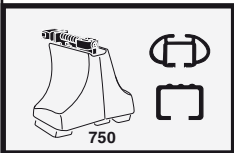
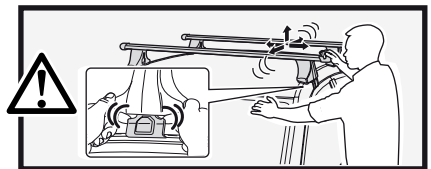
*
3 Nm



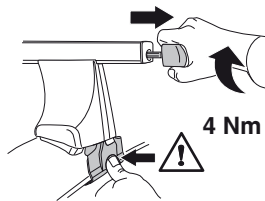
*



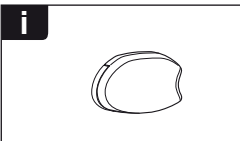
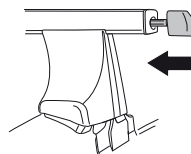
*
≈ 3 Nm



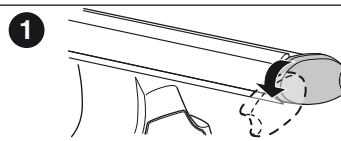
750



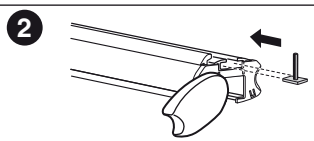
4 Nm



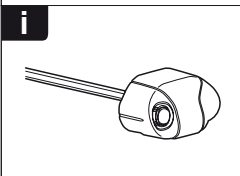
i



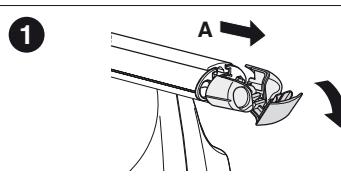
1



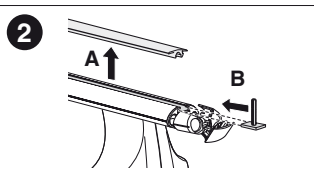
2



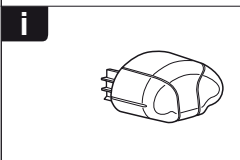
i



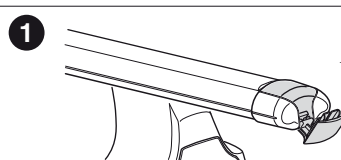
1



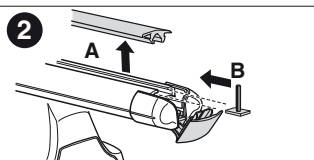
2



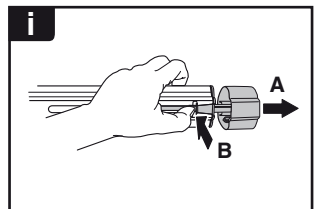
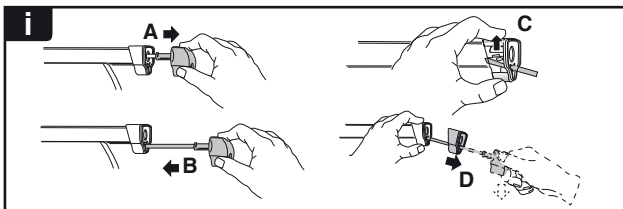
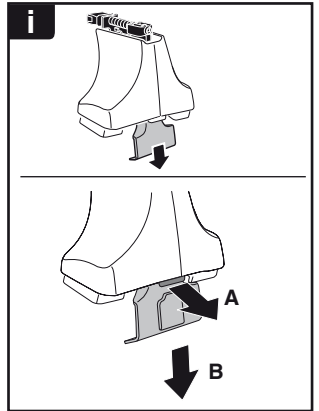
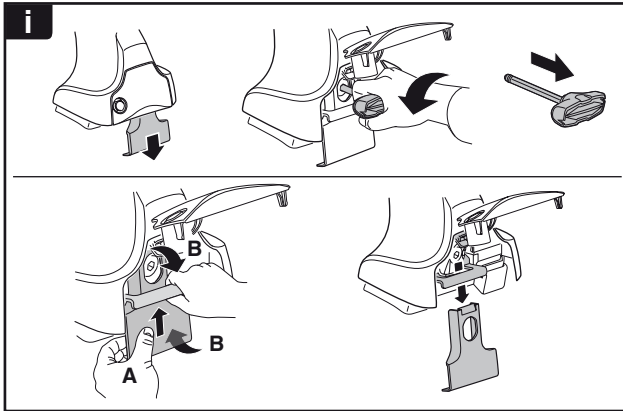
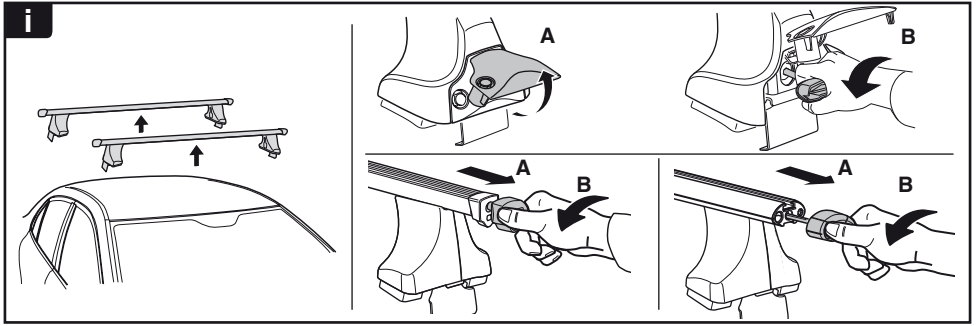
i



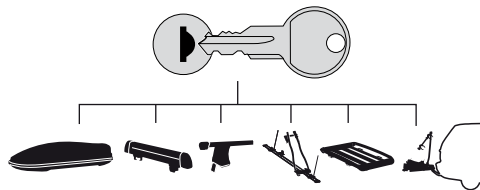
1



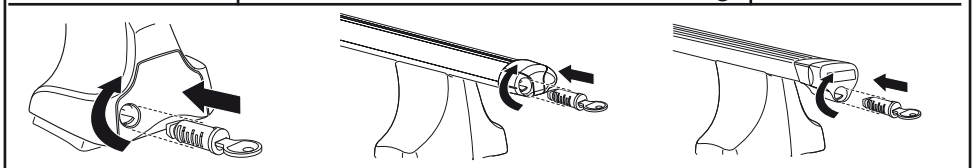
2



THULE
SWEDEN
**ONE
KEY
SYSTEM**



- 544 (x4)
- 596 (x6)
- 588 (x8)
- NA 510 (x10)
- EUR 452 (x12)
- ASIA



WW ▶ Thule Sweden AB, Box 69, 330 33 Hillerstorp, SWEDEN
NA ▶ Thule Inc., 42 Silvermine Road, Seymour, Connecticut 06483, USA

info@thule.com
customer.service@thule.com

www.thule.com