

BLACK FROM DC
 ADAPTER TO
 NEGATIVE TERMINAL
 OF BATTERY

RED FROM FIBER BRD
 TO POSITIVE TERMINAL
 OF BATTERY

BLACK FROM PCB (NEG)
 TO DC ADAPTER

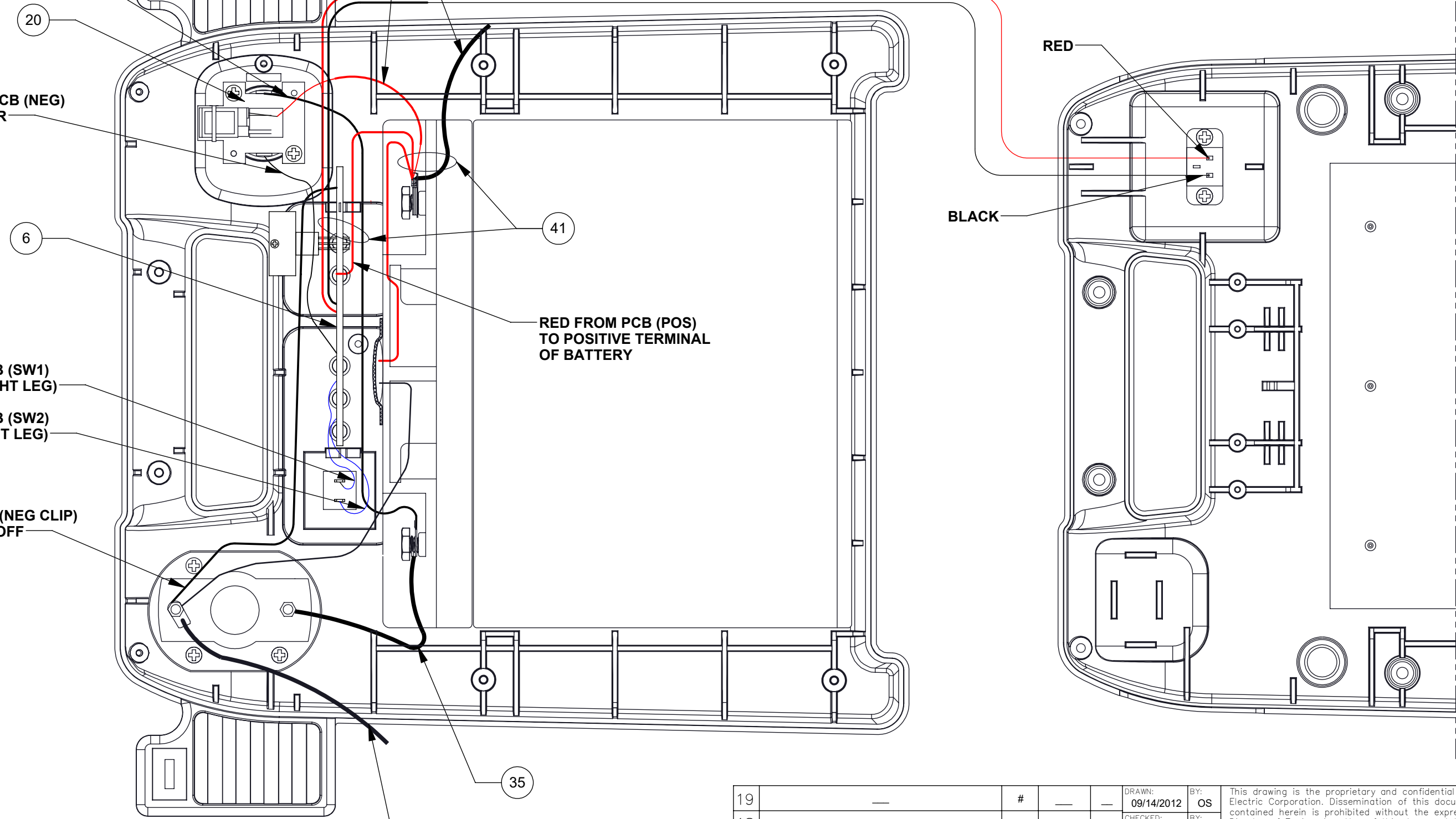
BLUE FROM PCB (SW1)
 TO SWITCH (RIGHT LEG)


BLUE FROM PCB (SW2)
 TO SWITCH (LEFT LEG)

BLK FROM PCB (NEG CLIP)
 TO SWITCH ON/OFF

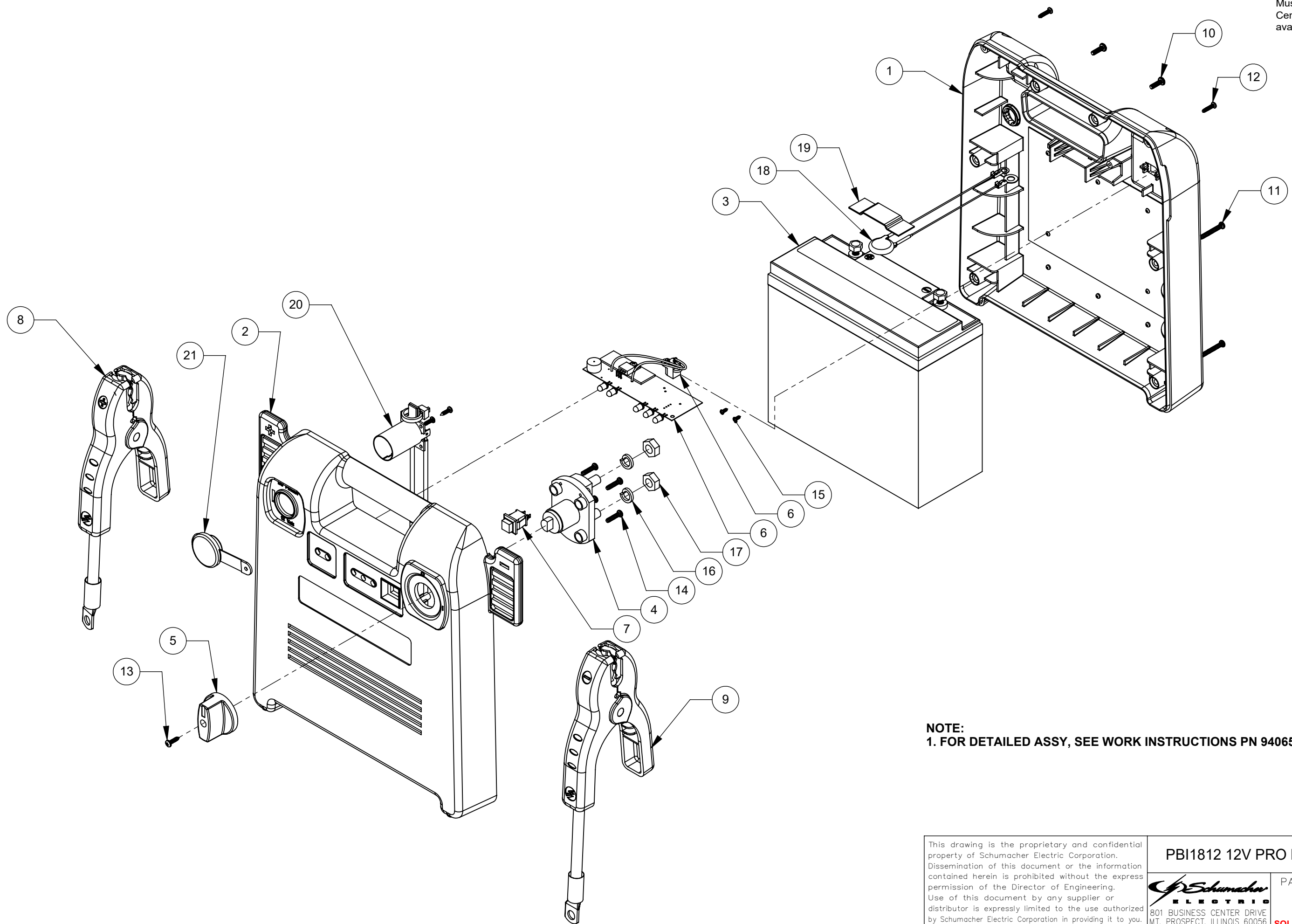
RED FROM PCB (POS)
 TO POSITIVE TERMINAL
 OF BATTERY

RED
 BLACK



19	—	#	—	—	DRAWN: 09/14/2012	BY: OS	This drawing is the proprietary and confidential property of Schumacher Electric Corporation. Dissemination of this document or the information contained herein is prohibited without the express permission of the Director of Engineering. Use of this document by any supplier or distributor is expressly limited to the use authorized by Schumacher Electric Corporation in providing it to you.
18	—	#	—	—	CHECKED: 12/06/2016	BY: ME	
17	—	#	—	—	APPROVED: 12/06/2016	BY: JLM	
16	—	#	—	—	SCALE: 1:3	SIZE: B	
15	REPLACE 3400500010 QTY. 0.03125 EA WITH 3499102395 QTY. 0.01429 EA; UPDATE QTY. FROM 3400200048 0.05714 EA TO 0.08571, 3499104603 QTY. 0.03808 TO 0.05714 EA	11211	10/21/19	FZ	ALL DIMENSIONS IN INCH(MM) UNLESS OTHERWISE SPECIFIED	THIRD ANGLE PROJECTION	 801 BUSINESS CENTER DRIVE MT. PROSPECT, ILLINOIS 60056
NO.	REVISION	ECN	DATE	SIG.	TOLERANCES .XXX ±.004[0.10] .XX ±0.01[0.3] .X ±0.1[2.5] FRACTIONAL ±1/64 ANGULAR ±5MIN	PBI1812 12V PRO BOOSTER PLUG C CE PART NUMBER: 94065001C SOLIDWORKS SH 1 OF 4	

Must be RoHS 2011/65/EU compliant.
 Certification of compliance must be
 available upon request.



NOTE:
 1. FOR DETAILED ASSY, SEE WORK INSTRUCTIONS PN 94065001CWI

This drawing is the proprietary and confidential property of Schumacher Electric Corporation. Dissemination of this document or the information contained herein is prohibited without the express permission of the Director of Engineering. Use of this document by any supplier or distributor is expressly limited to the use authorized by Schumacher Electric Corporation in providing it to you.

PBI1812 12V PRO BOOSTER PLUG C CE

Schumacher ELECTRIC
 801 BUSINESS CENTER DRIVE
 MT. PROSPECT, ILLINOIS 60056

PART NUMBER:
94065001C
 SOLIDWORKS SH 2 OF 4

REV:
15

BILL OF MATERIALS			
ITEM NO.	PART NUMBER	DESCRIPTION	QTY.
1	3699001847	CASE BACK PBI1812 W/DC MALE PLUG INSER	1
2	3699001853	CASE FRONT PBI1812	1
3	5799000010T	BATT 12V22AH W/ UL MARK (TESTED)	1
4	0499000148	SWITCH, ON/OFF BLK PBI/PSJ	1
5	0099000678	SWITCH-KNOB	1
6	2299002844	ASSY PCB CNTRL/PWR BD 338994 BERNER	1
7	0499000084	SWITCH PUSH RED KNOB 1A 125 VAC	1
8	2299002593	ASSY BATT CABLE WITH FUSE PBI1812	1
9	3899002884	CABLE 4GA 31.5IN BLACK C JAW T924	1
10	5199000426	SCREW M3.5x12 PH PHST SBZP	2
11	5199000456	SCREW M3.5x25 PH PHST SZP	4
12	5100000017	SCREW M3x12 PH PHST SBZP	2
13	5199001122	SCREW M3x12 PH PHST SBLX	1
14	5199000464	SCREW M3.5x15 PH PHST NP	4
15	5199001490	SCREW M2.5x6 PH PHST SZP	2
16	5299000024	WASHER, SPRING 12.5 X 8.2 X 2.2MM	2
17	5299000030	NUT M8 X 1.25 STEEL ZINC PLATED	2
18	2299002594	ASSY VARISTOR PBI1812 REPL	1
19	0000000723	TAPE 63X19X1.5MM ADHESIVE BACKED	1
20	2299002203	ASSY FIBER BOARD W/BREAKER	1
21	4999000208	COVER DC SOCKET PVC BLACK	1

ITEM NO.	PART NUMBER	DESCRIPTION	QTY.
22	0899005026	LABEL PRODUCT PBI1812	1
23	0899005027	LABEL CNTRL PNL JMP START PBI1812 L	1
24	0899005028	LABEL CNTRL PNL JMP START PBI1812 R	1
25	0899005029	LABEL LOWER FRONT PBI1812	1
26	0899005031	LABEL IMMDET CHRGR MULTI-LNG INTL	1
27	0899005033	LABEL DC INPUT 17V 700MA	1
28	0899006133	LABEL DC OUTPUT 12V 15A ACCESSORY PORT	1
29	0899006364	LABEL BATT SCHUMACHER	1
30	0899006377	CARTON LABEL UPC PBI1812	1
31	0899006848	LABEL JUMP STARTER WARNING MULTI-LNG	1
32	0899007418	LABEL DEKRA PBI1812	3
33	3499102017	CARTON INDIVIDUAL PBI1812	1
34	3499102055	CARTON INSERT PBI1812	2
35	3899003543	JMP 4GA BLK3.5 IN 913/924	1
36	4999000336	EPE FOAM INSERT 50X50X40MM	1
37	9614000461	SPEC TO PRINT SERVICE CODE LABEL	1
38	9614000582	SPEC TO PRINT LBL NON SPILLABLE	1
39	9614000688	SPEC TO PRINT DATE CODE PBI MODELS	3
40	2299003051CZ	WALL CHGR CE LISTED 17V 1.0A PLUG C REPL	1
41	0000000144	CABLE TIE TYTON CABLE #T18R	2
42	0099001154	MANUAL OWNERS PBI1812	1

NOT SHOWN ON DRAWING				
15	43	3400200048	PAD CARDBOARD 44 X 44 INCH	0.08571
15	44	3499102395	PALLET 800MM x 1200MM PLASTIC EURO 2	0.01429
	45	9607000460	TEST PROCEDURE PBI1812	1
	46	9610000385	SCHEMATICS PBI1812	1
	47	0000000657	PLASTIC WRAP 20 IN X 5500 FT X 80 GA	.0014 RL
	48	0899010402	LABEL ADDRESS 30X19MM SCHUMACHER BELGIUM	1
15	49	3499104603	PAD SKID EDGE/CORNER 72 x 2 X 2 X IN	0.05714
	50	0899005082	LABEL CARTON UPC PBI1812 PLUG C	1

This drawing is the proprietary and confidential property of Schumacher Electric Corporation. Dissemination of this document or the information contained herein is prohibited without the express permission of the Director of Engineering. Use of this document by any supplier or distributor is expressly limited to the use authorized by Schumacher Electric Corporation in providing it to you.

PBI1812 12V PRO BOOSTER PLUG C CE

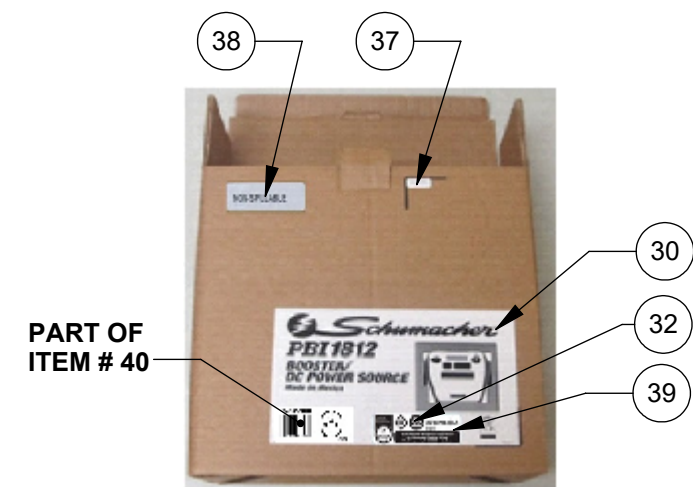
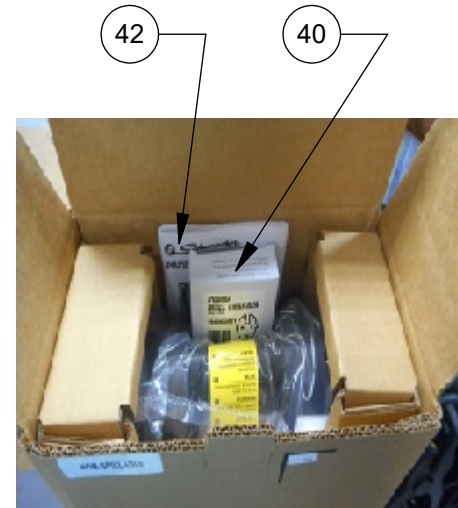
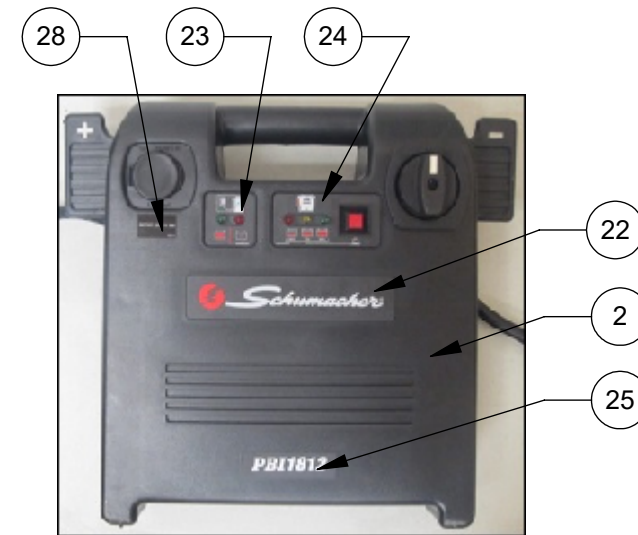
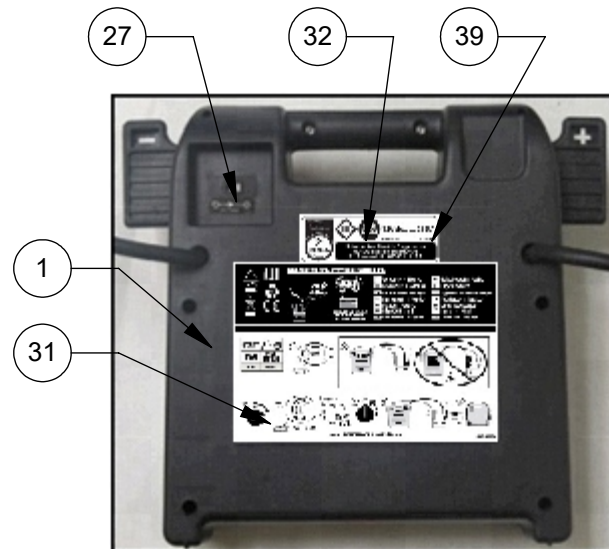
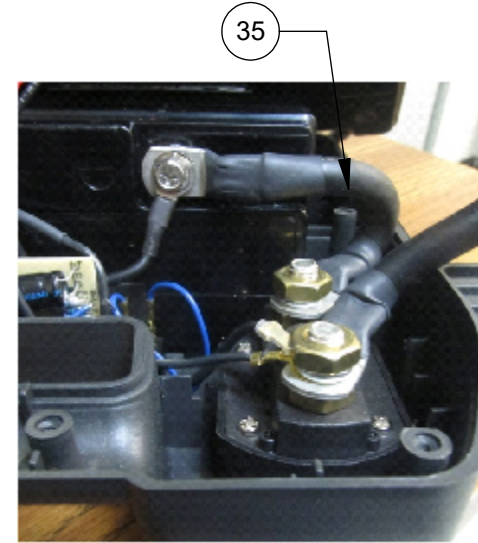
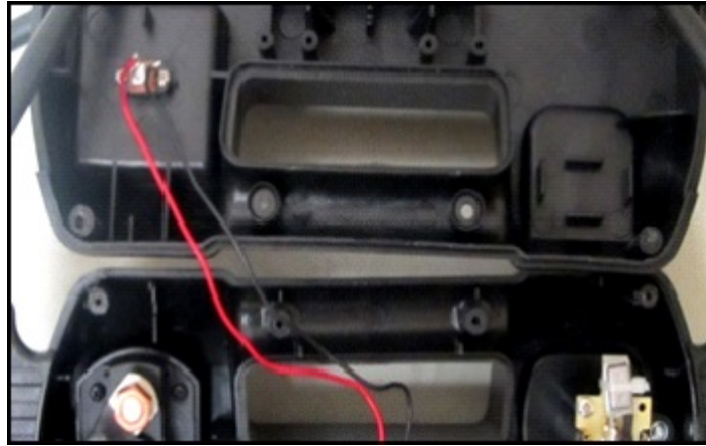
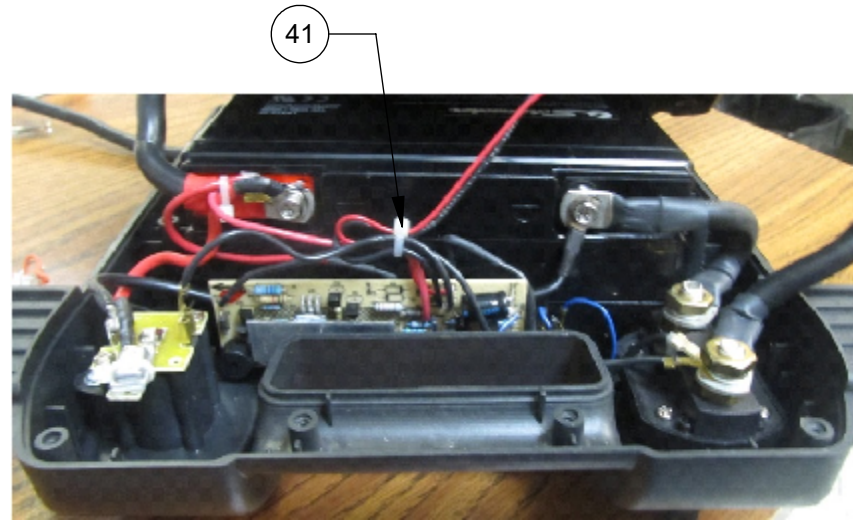


PART NUMBER:
94065001C
REV: **15**

801 BUSINESS CENTER DRIVE
MT. PROSPECT, ILLINOIS 60056

SOLIDWORKS SH 3 OF 4

Must be RoHS 2011/65/EU compliant.
 Certification of compliance must be
 available upon request.



NOTE:
 PLASTIC BAG MAY OR MAY NOT BE USED.

This drawing is the proprietary and confidential property of Schumacher Electric Corporation. Dissemination of this document or the information contained herein is prohibited without the express permission of the Director of Engineering. Use of this document by any supplier or distributor is expressly limited to the use authorized by Schumacher Electric Corporation in providing it to you.

PBI1812 12V PRO BOOSTER PLUG C CE

Schumacher ELECTRIC
 801 BUSINESS CENTER DRIVE
 MT. PROSPECT, ILLINOIS 60056

PART NUMBER:
94065001C
 SOLIDWORKS SH 4 OF 4

REV:
15