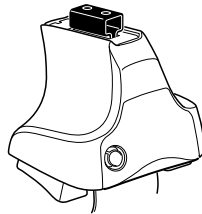


Kit 1589

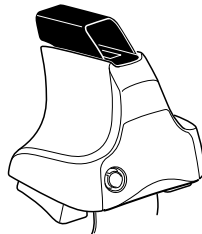
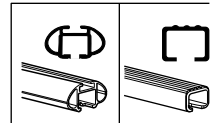
VOLKSWAGEN Polo (Mk.IV), 3-dr Hatchback, 02-04, 05-09

VOLKSWAGEN Polo (Mk.IV), 4-dr Sedan, 02-04, 05-09

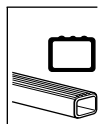
VOLKSWAGEN Polo (Mk.IV), 5-dr Hatchback, 02-04, 05-09



754 Rapid System
480R Rapid Traverse (North America)



480 Traverse (North America)



VOLKSWAGEN Polo (Mk.IV), 3-dr Hatchback, 02-04, 05-09

Max. 60kg/132 lbs

$xx \text{ kg} + 7 \text{ kg} = 15,4 \text{ lbs}$

VOLKSWAGEN Polo (Mk.IV), 4-dr Sedan, 02-04, 05-09

Max. 75kg/165 lbs

VOLKSWAGEN Polo (Mk.IV), 5-dr Hatchback, 02-04, 05-09

km/h Mph

THULE Kit XXXX instructions

x1

x4

754 Rapid System

x1

x4

480R Rapid Traverse (North America)

x1

x4

480 Traverse (North America)

x2

x2

23 mm

x1

17 mm

x2

23 mm

x2

x4

x4

x2

x2

(North America)

x2

x2

x2

x1

x1

x1

x1

x2

x2

x2

x2

x2

x2

x4

x1

1



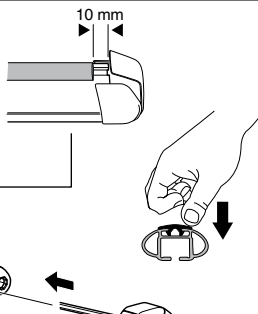
2



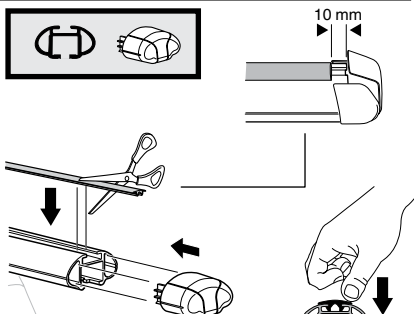
754 Rapid System
480R Rapid Traverse
(North America)



x4



x4



x4



480 Traverse
(North America)



x4

3



754 Rapid System



	X
VOLKSWAGEN Polo (Mk.IV) , 3-dr Hatchback, 02-04, 05-09	30,5
VOLKSWAGEN Polo (Mk.IV) , 4-dr Sedan, 02-04, 05-09	30
VOLKSWAGEN Polo (Mk.IV) , 5-dr Hatchback, 02-04, 05-09	30,5



	Y
VOLKSWAGEN Polo (Mk.IV) , 3-dr Hatchback, 02-04, 05-09	27
VOLKSWAGEN Polo (Mk.IV) , 4-dr Sedan, 02-04, 05-09	28
VOLKSWAGEN Polo (Mk.IV) , 5-dr Hatchback, 02-04, 05-09	27

3

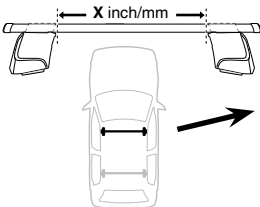


480R Rapid Traverse

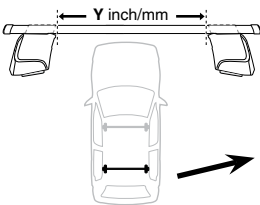


480 Traverse

(North America)

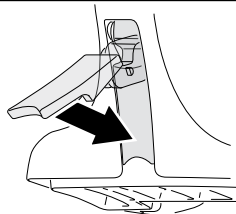


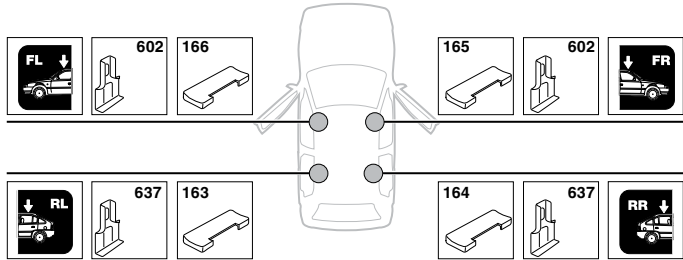
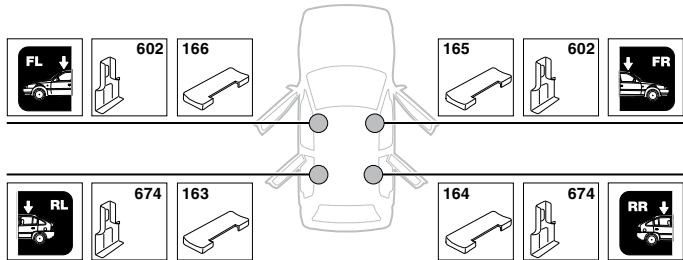
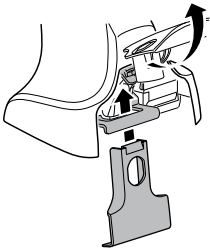
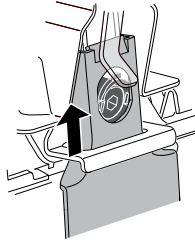
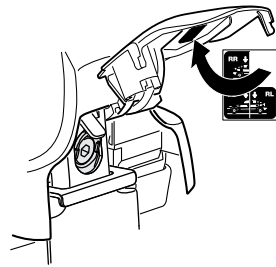
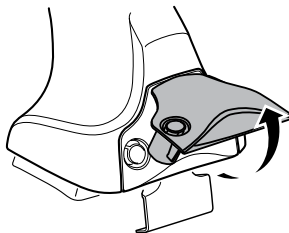
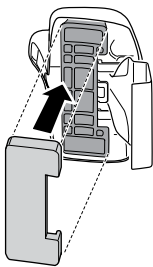
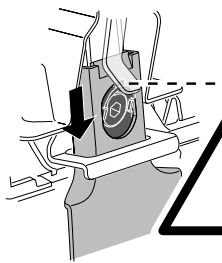
	X inch	X mm
VOLKSWAGEN Polo (Mk.IV) , 3-dr Hatchback, 02-04, 05-09	37 ⁵/₈ "	956 mm
VOLKSWAGEN Polo (Mk.IV) , 4-dr Sedan, 02-04, 05-09	37 ¹/₂ "	951 mm
VOLKSWAGEN Polo (Mk.IV) , 5-dr Hatchback, 02-04, 05-09	37 ⁵/₈ "	956 mm



	Y inch	Y mm
VOLKSWAGEN Polo (Mk.IV) , 3-dr Hatchback, 02-04, 05-09	36 ¹/₄ "	921 mm
VOLKSWAGEN Polo (Mk.IV) , 4-dr Sedan, 02-04, 05-09	36 ⁵/₈ "	931 mm
VOLKSWAGEN Polo (Mk.IV) , 5-dr Hatchback, 02-04, 05-09	36 ¹/₄ "	921 mm

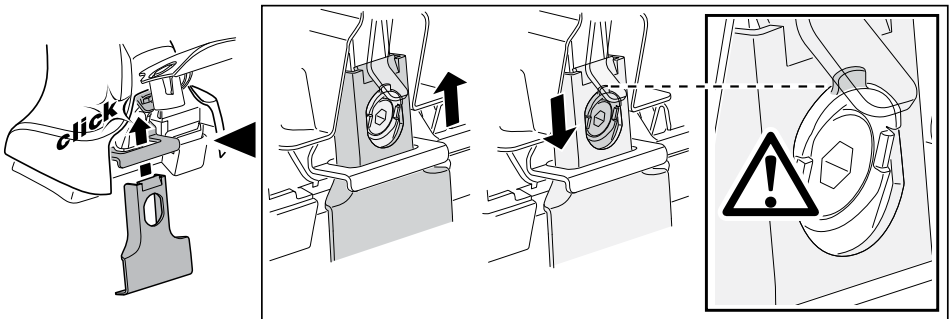
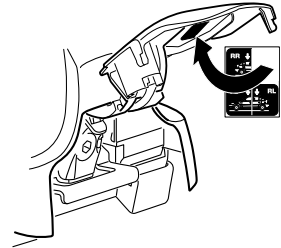
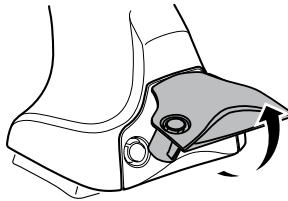
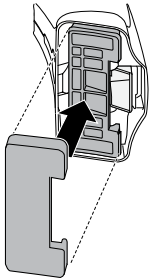
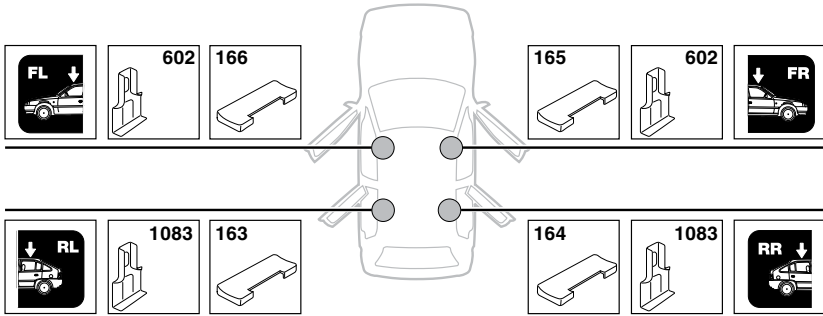
4



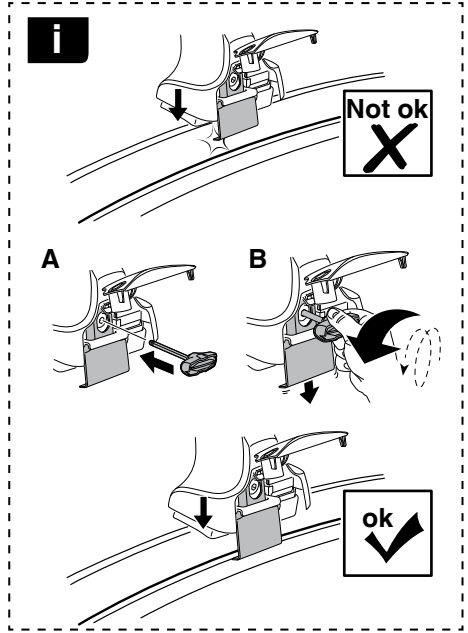
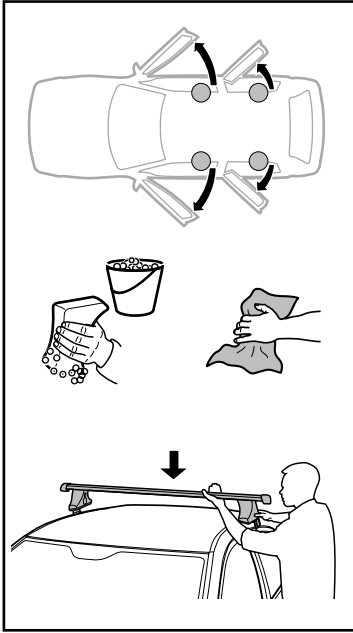
5**VOLKSWAGEN Polo (Mk.IV), 3-dr Hatchback, 02-04, 05-09****VOLKSWAGEN Polo (Mk.IV), 4-dr Sedan, 02-04, 05-09****A****B****C**

5

VOLKSWAGEN Polo (Mk.IV), 5-dr Hatchback, 02-04, 05-09



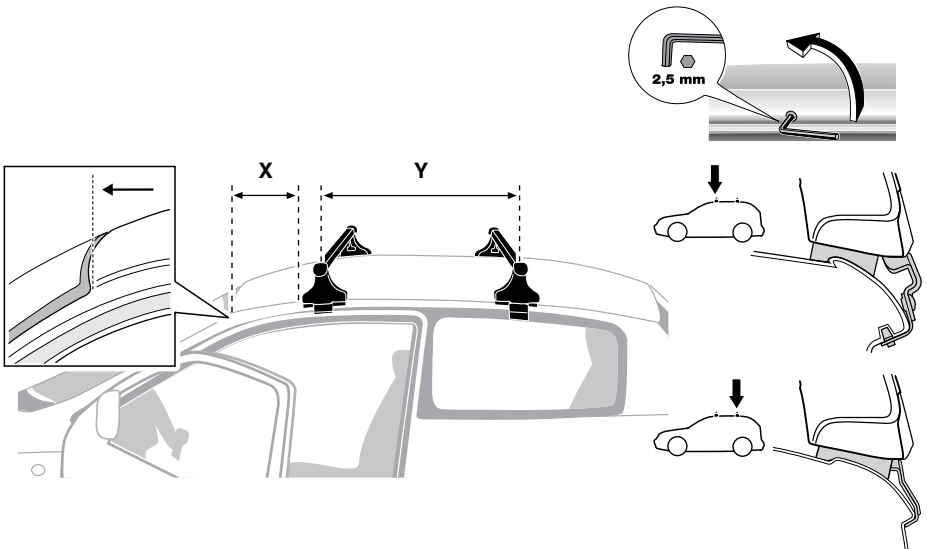
6



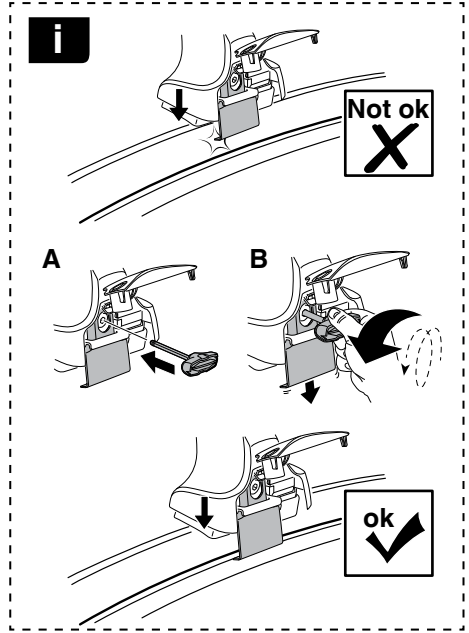
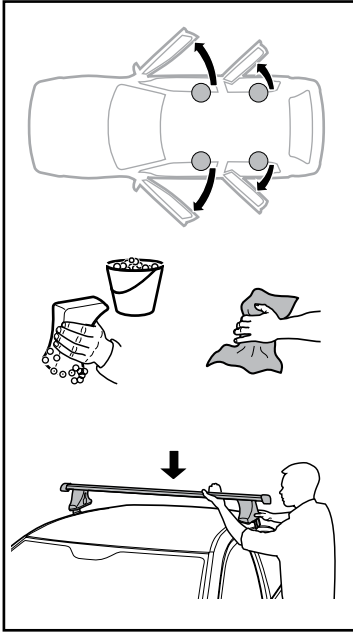
VOLKSWAGEN Polo (Mk.IV), 3-dr Hatchback, 02-04, 05-09

X mm Y mm X inch Y inch

250 mm 755 mm 9 7/8" 29 3/4"



6



VOLKSWAGEN Polo (Mk.IV), 4-dr Sedan, 02-04, 05-09

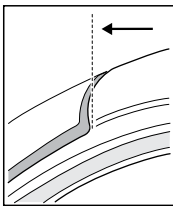
X mm Y mm X inch Y inch

245 mm

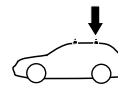
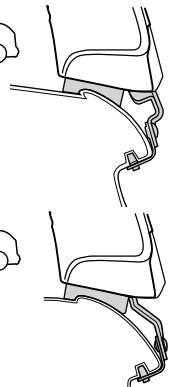
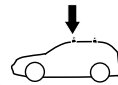
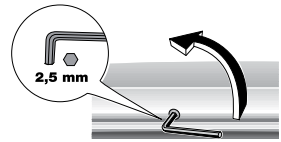
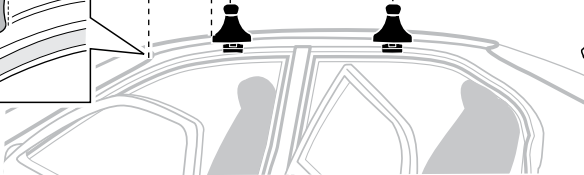
790 mm

9 5/8"

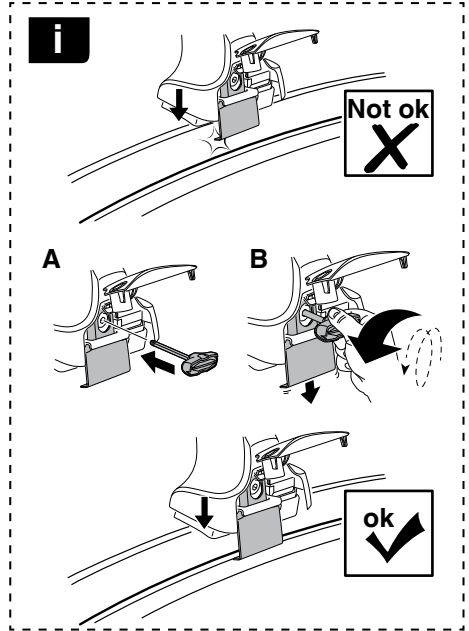
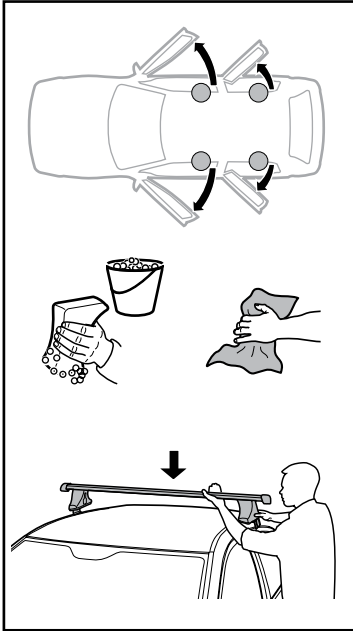
31 1/8"



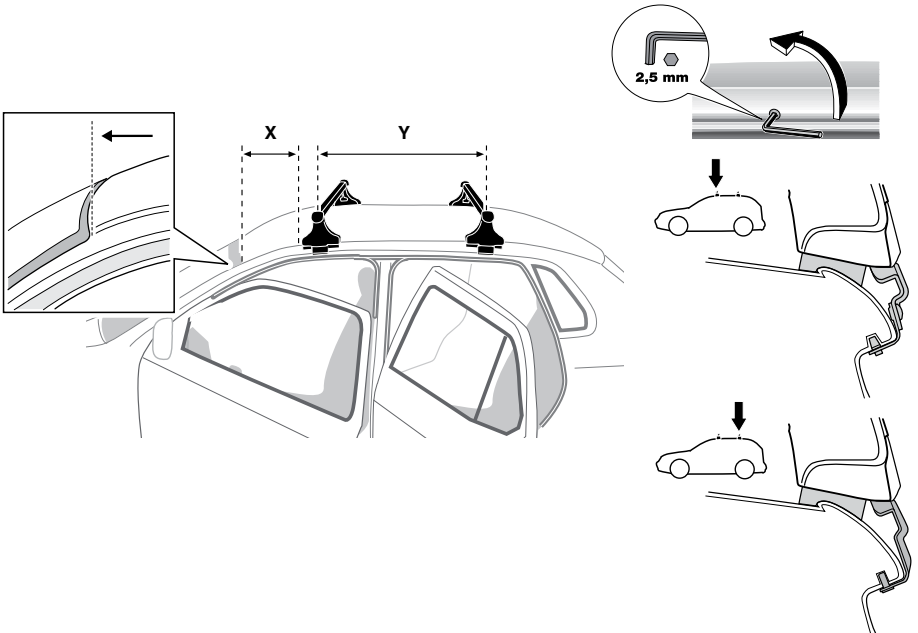
X Y



6

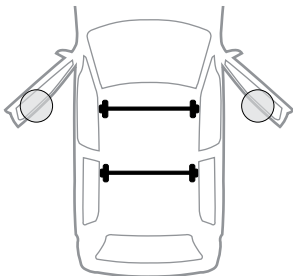


	X mm	Y mm	X inch	Y inch
VOLKSWAGEN Polo (Mk.IV), 5-dr Hatchback, 02-04, 05-09	245 mm	780 mm	9 5/8"	30 3/4"



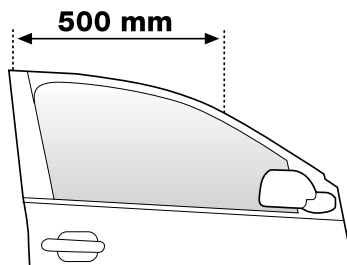
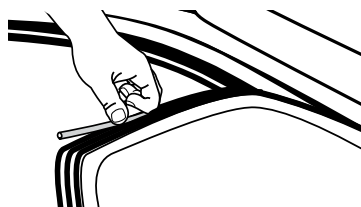
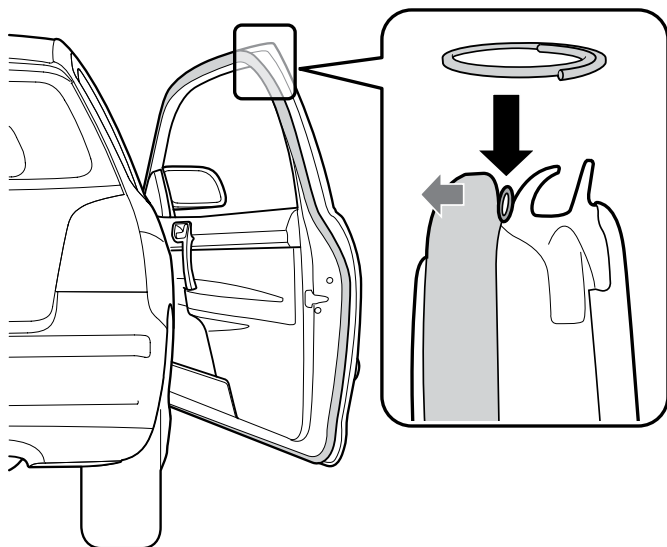
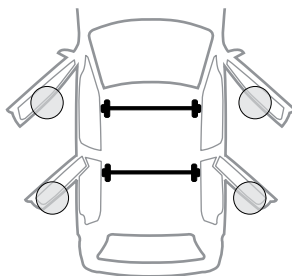
7 x 4

VOLKSWAGEN Polo (Mk.IV),
3-dr Hatchback, 02-04, 05-09

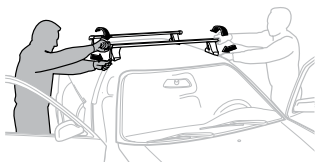


VOLKSWAGEN Polo (Mk.IV),
4-dr Sedan, 02-04, 05-09

VOLKSWAGEN Polo (Mk.IV),
5-dr Hatchback, 02-04, 05-09



8



GB/US Tighten alternately
 D Die Schrauben abwechselnd anziehen
 F Serrer alternativement chaque côté
 NL Afwisselend aan de linker- en de rechterkant aandraaien
 I Alternare il serraggio delle viti
 E Apertar alternativamente
 PT Aperte alternadamente
 S Dra åt växelvis
 FIN Kierrä vuorotellen
 EST Pinguldage vaheldumisi
 LAT Pieļieciet pamišus
 LIT Užsukinėkite pakaitomis
 PL Śruby dokręcaj naprzemiennie
 RU Затягивайте попеременно

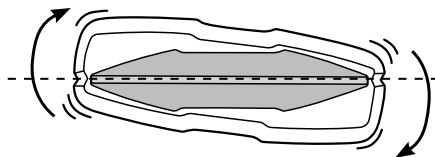
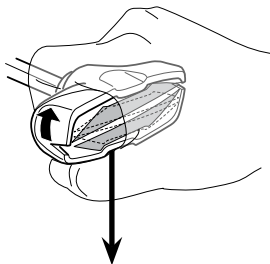
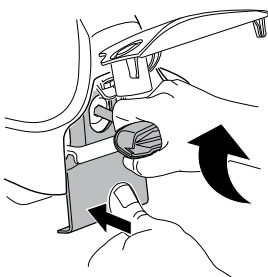
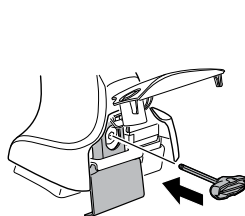
CZ Pokręťta bagażnika dokręcaj dokręcaj naprzemiennie.
 SK Dofahajte striedavo
 SLO Privijajte izmenično.
 HR Naizmjerno zategnite
 HU Egymástól függetlenül szorítandó
 GR Σφιγίγτες εναλλάξ
 TR Dönüşümlü sıkın

中文 交替拧紧

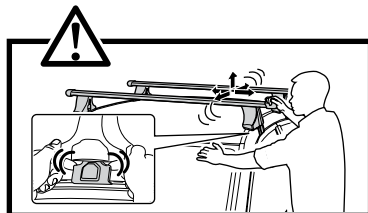
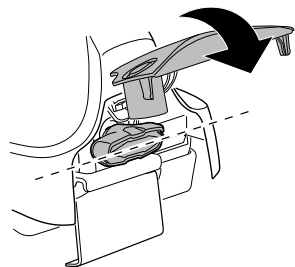
한국어 번갈아 가며 조이십시오.

日本語 交互に締め付けてください。

ไทย ชันในแบบสลับ



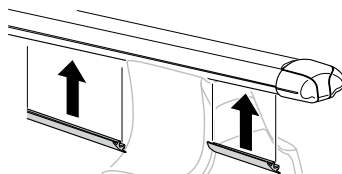
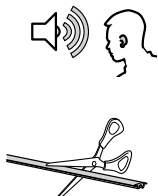
≈ 3 Nm

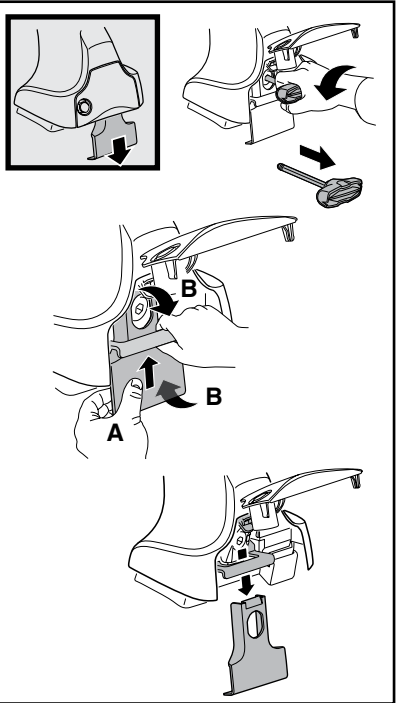
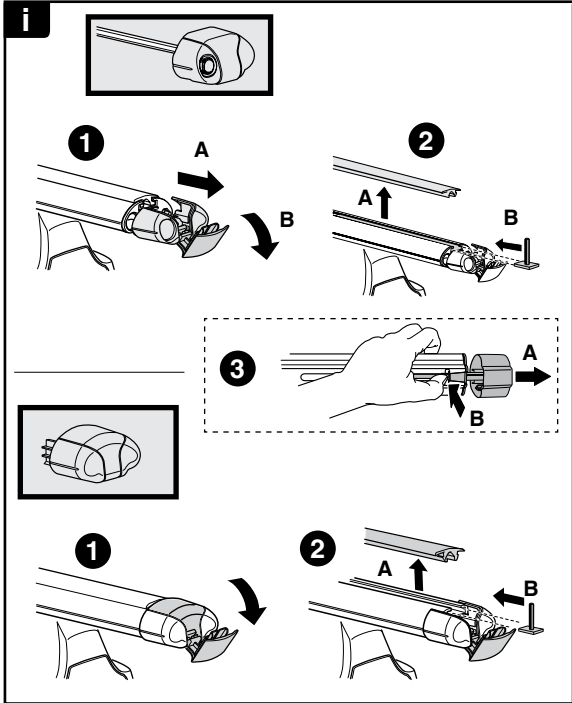
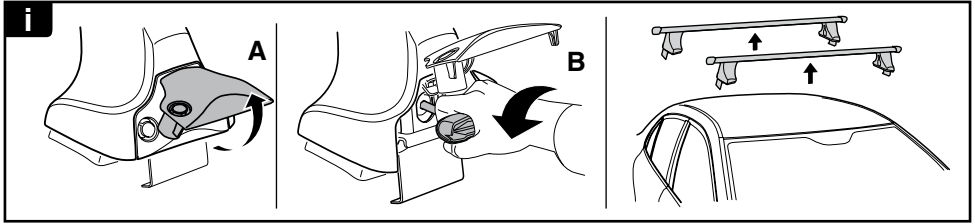


9

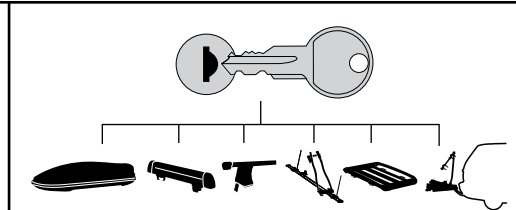


x1
17 mm

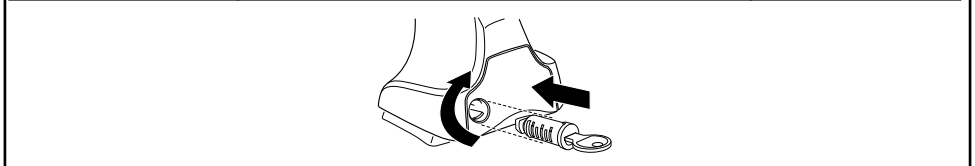




THULE
SWEDEN
**ONE
KEY
SYSTEM**



		(x4)
		(x6)
		(x8)
NA		(x10)
EUR		(x12)
ASIA		



WW ▶ Thule Sweden AB, Box 69, 330 33 Hillerstorp, SWEDEN
NA ▶ Thule Inc., 42 Silvermine Road, Seymour, Connecticut 06483, USA

info@thule.com
customer.service@thule.com

www.thule.com