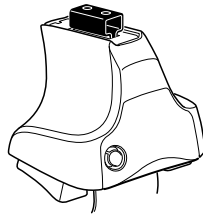


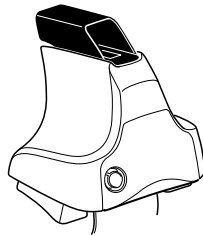
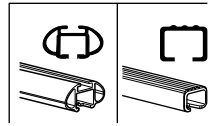
# Kit 1610

**KIA Magentis**, 4-dr Sedan, 06-10

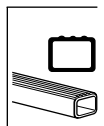
**KIA Optima**, 4-dr Sedan, 07-10



**754** Rapid System  
**480R** Rapid Traverse (North America)



**480** Traverse (North America)





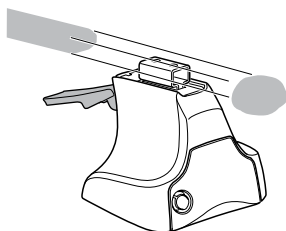
1



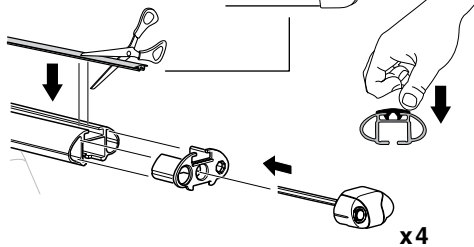
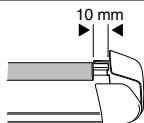
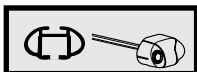
2



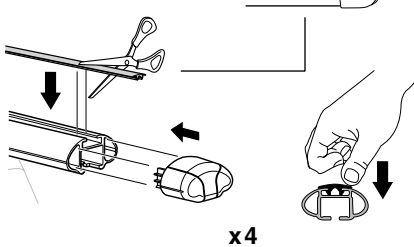
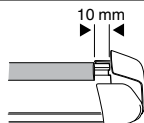
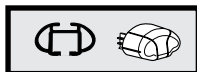
754 Rapid System  
480R Rapid Traverse  
(North America)



x4



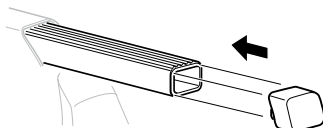
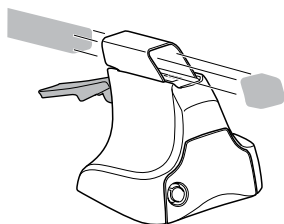
x4



x4

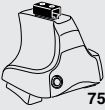


480 Traverse  
(North America)

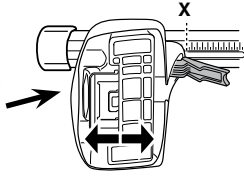


x4

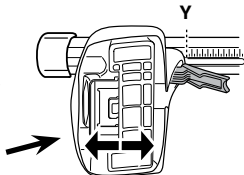
**3**



**754** Rapid System



	X
<b>KIA Magentis, 4-dr Sedan, 06-10</b>	<b>37</b>
<b>KIA Optima, 4-dr Sedan, 07-10</b>	<b>37</b>



	Y
<b>KIA Magentis, 4-dr Sedan, 06-10</b>	<b>36</b>
<b>KIA Optima, 4-dr Sedan, 07-10</b>	<b>36</b>

**3**

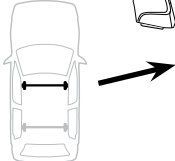


**480R** Rapid Traverse

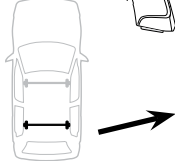


**480** Traverse

**(North America)**

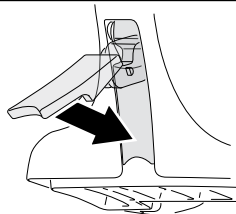


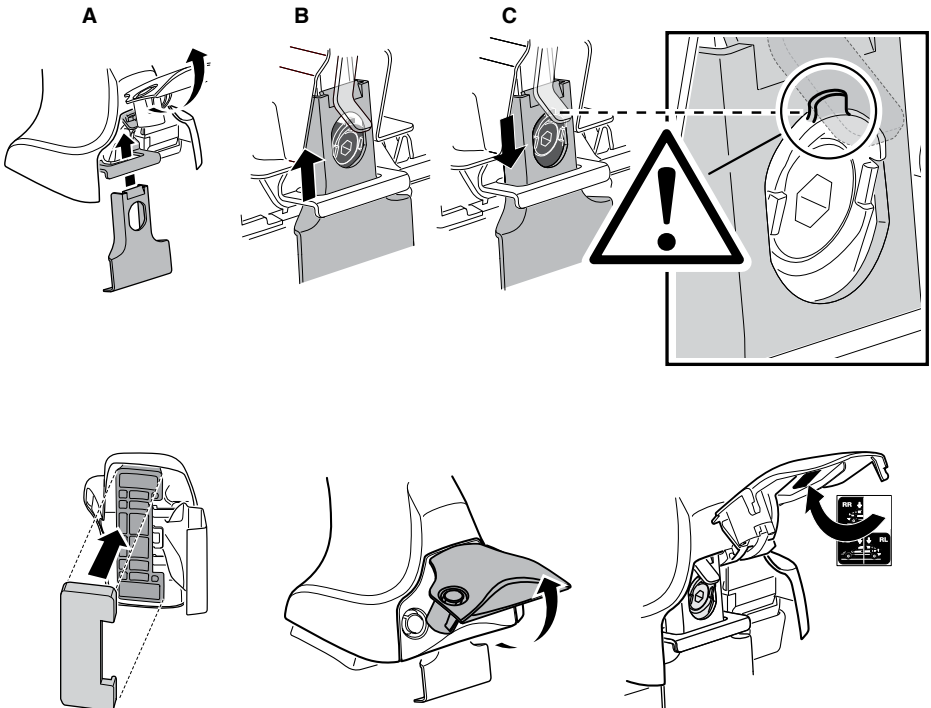
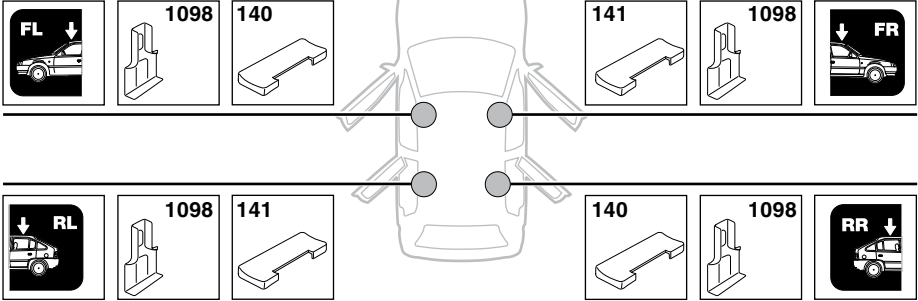
	X inch	X mm
<b>KIA Magentis, 4-dr Sedan, 06-10</b>	<b>40 1/4"</b>	<b>1021 mm</b>
<b>KIA Optima, 4-dr Sedan, 07-10</b>	<b>40 1/4"</b>	<b>1021 mm</b>



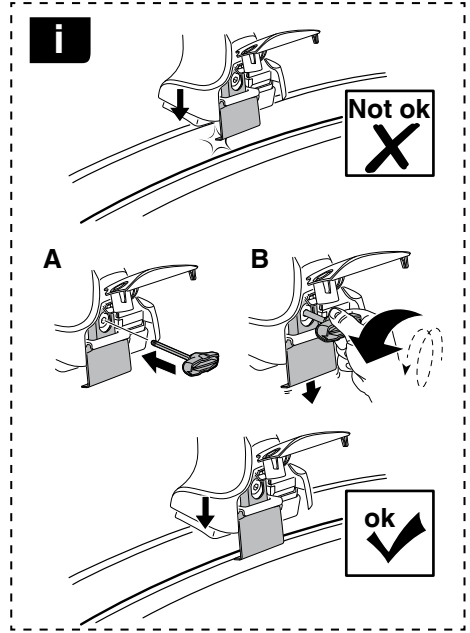
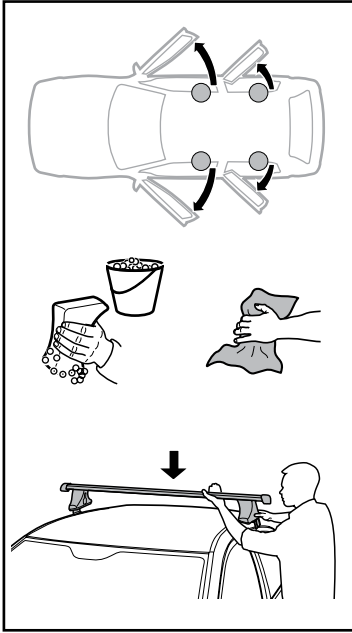
	Y inch	Y mm
<b>KIA Magentis, 4-dr Sedan, 06-10</b>	<b>39 3/4"</b>	<b>1011 mm</b>
<b>KIA Optima, 4-dr Sedan, 07-10</b>	<b>39 3/4"</b>	<b>1011 mm</b>

**4**

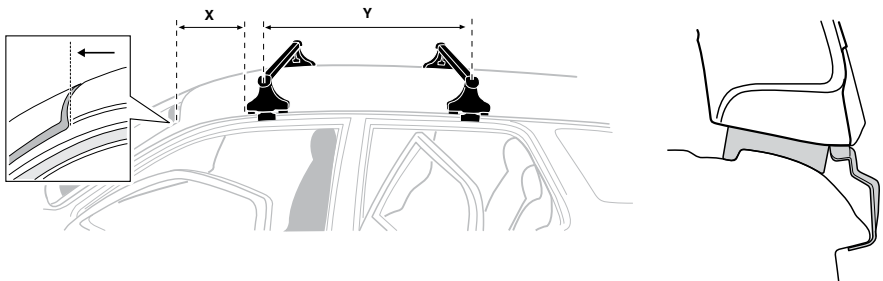


**5****KIA Magentis, 4-dr Sedan, 06-10****KIA Optima, 4-dr Sedan, 07-10**

6



	X mm	Y mm	X inch	Y inch
KIA Magentis, 4-dr Sedan, 06-10	250 mm	670 mm	9 <sup>7</sup> / <sub>8</sub> "	26 <sup>3</sup> / <sub>8</sub> "
KIA Optima, 4-dr Sedan, 07-10	250 mm	670 mm	9 <sup>7</sup> / <sub>8</sub> "	26 <sup>3</sup> / <sub>8</sub> "



7



**GB/US** Tighten alternately  
**D** Die Schrauben abwechselnd anziehen  
**F** Serrer alternativement chaque côté  
**NL** Afwisselend aan de linker- en de rechterkant aandraaien  
**I** Alternare il serraggio delle viti  
**E** Apertar alternativamente  
**PT** Aperte alternadamente  
**S** Dra åt växelvis  
**FIN** Kierrä vuorotellen  
**EST** Pinguldage vaheldumisi  
**LAT** Pieļieciet pamišus  
**LIT** Užsukinėkite pakaitomis  
**PL** Śruby dokręcaj naprzemiennie  
**RU** Затягивайте попеременно

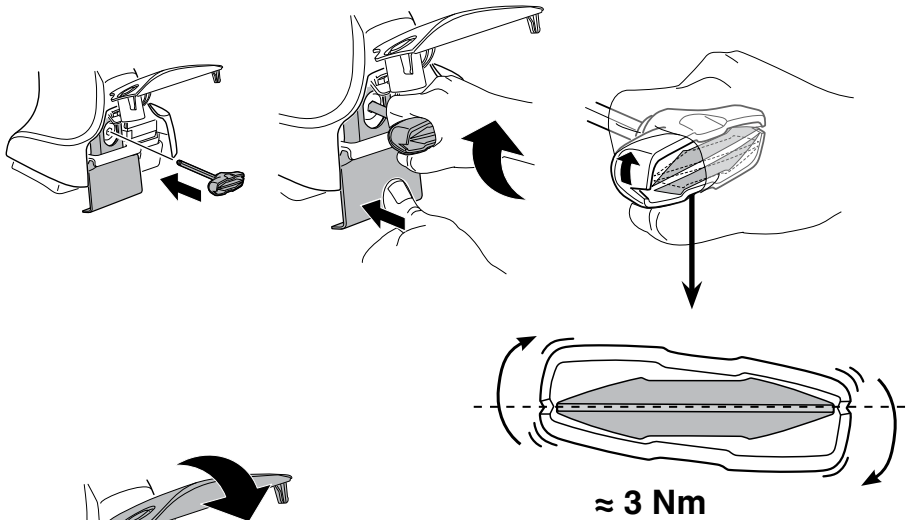
**CZ** Pokręťta bagażnika dokręcaj naprzemiennie.  
**SK** Dofahajte striedavo  
**SLO** Privijajte izmenično.  
**HR** Naizmjenočno zategnite  
**HU** Egymástól függetlenül szorítandó  
**GR** Σφιγίγτες εναλλάξ  
**TR** Dönüşümlü sıkın

**中文** 交替拧紧

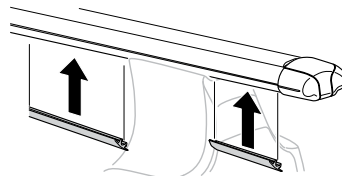
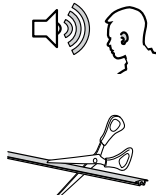
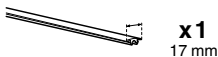
**한국어** 번갈아 가며 조이십시오.

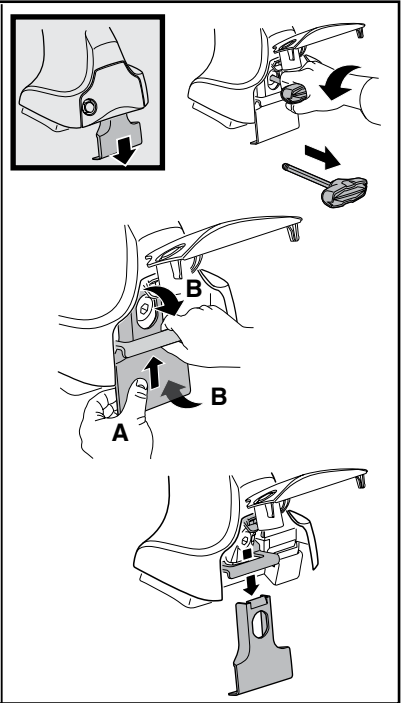
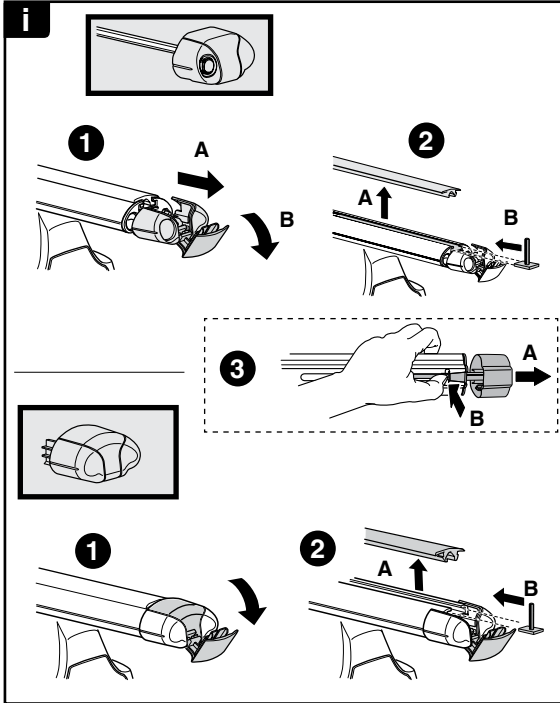
**日本語** 交互に締め付けてください。

**ไทย** ชันในแบบสลับ



8





**THULE**  
SWEDEN  
**ONE  
KEY  
SYSTEM**



		(x4)
		(x6)
		(x8)
NA		(x10)
EUR		(x12)
ASIA		



WW ▶ Thule Sweden AB, Box 69, 330 33 Hillerstorp, SWEDEN  
NA ▶ Thule Inc., 42 Silvermine Road, Seymour, Connecticut 06483, USA

info@thule.com  
customer.service@thule.com

www.thule.com