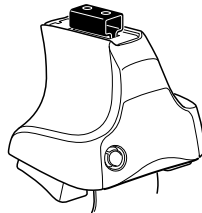


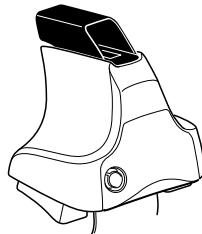
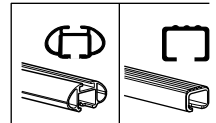
# Kit 1520

- DODGE Ram 1500**, 2-dr Single Cab, 09–
- DODGE Ram 1500**, 4-dr Crew Cab, 09–
- DODGE Ram 1500**, 4-dr Double Cab, 09–
- DODGE Ram 2500 / 3500**, 2-dr Standard Cab, \*09–
- DODGE Ram 2500 / 3500**, 4-dr Crew Cab, \*09–
- DODGE Ram 2500 / 3500**, 4-dr Mega Cab, \*09–
- DODGE Ram 2500 / 3500**, 4-dr Quad Cab, \*09–

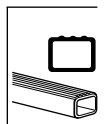
\*North America



**754** Rapid System  
**480R** Rapid Traverse (North America)



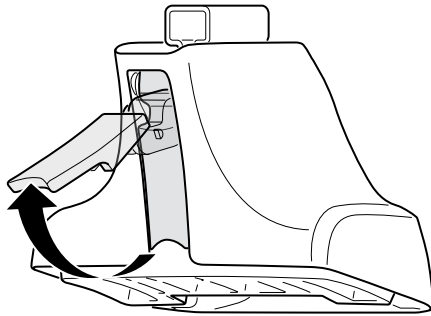
**480** Traverse (North America)



754 Rapid System  
480R Rapid Traverse (North America)

480 Traverse (North America)

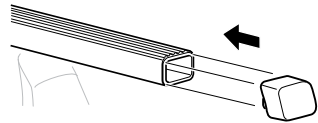
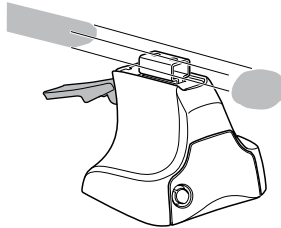
1



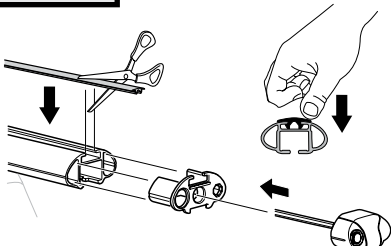
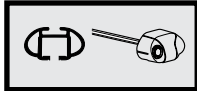
2



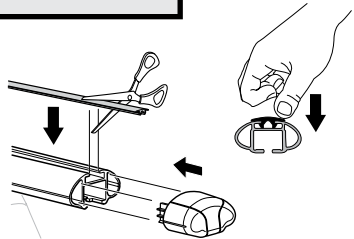
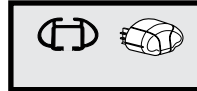
754 Rapid System  
480R Rapid Traverse  
(North America)



x4



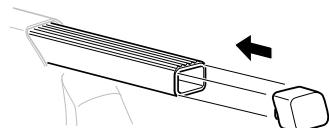
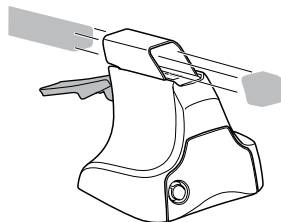
x4



x4



480 Traverse  
(North America)

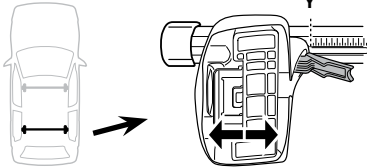
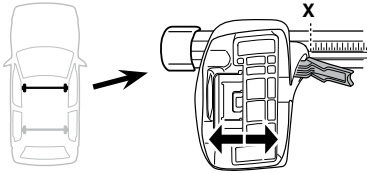


x4

**3**



754 Rapid System



	X
DODGE Ram 1500, 2-dr Single Cab, 09-	64,5
DODGE Ram 1500, 4-dr Crew Cab, 09-	64,5
DODGE Ram 1500, 4-dr Double Cab, 09-	64,5
DODGE Ram 2500 / 3500, 2-dr Standard Cab, *09-	64,5
DODGE Ram 2500 / 3500, 4-dr Crew Cab, *09-	64,5
DODGE Ram 2500 / 3500, 4-dr Mega Cab, *09-	64,5
DODGE Ram 2500 / 3500, 4-dr Quad Cab, *09-	64,5

	Y
DODGE Ram 1500, 2-dr Single Cab, 09-	64,5
DODGE Ram 1500, 4-dr Crew Cab, 09-	63,5
DODGE Ram 1500, 4-dr Double Cab, 09-	63,5
DODGE Ram 2500 / 3500, 2-dr Standard Cab, *09-	64,5
DODGE Ram 2500 / 3500, 4-dr Crew Cab, *09-	63,5
DODGE Ram 2500 / 3500, 4-dr Mega Cab, *09-	63,5
DODGE Ram 2500 / 3500, 4-dr Quad Cab, *09-	63,5

**3**



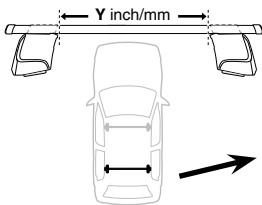
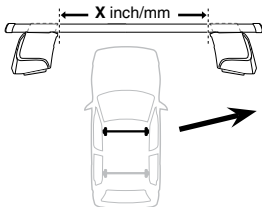
480R Rapid Traverse



480 Traverse



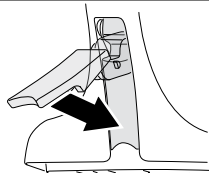
(North America)



	X inch	X mm
DODGE Ram 1500, 2-dr Single Cab, 09-	51 "	1295 mm
DODGE Ram 1500, 4-dr Crew Cab, 09-	51 "	1295 mm
DODGE Ram 1500, 4-dr Double Cab, 09-	51 "	1295 mm
DODGE Ram 2500 / 3500, 2-dr Standard Cab, *09-	51 "	1295 mm
DODGE Ram 2500 / 3500, 4-dr Crew Cab, *09-	51 "	1295 mm
DODGE Ram 2500 / 3500, 4-dr Mega Cab, *09-	51 "	1295 mm
DODGE Ram 2500 / 3500, 4-dr Quad Cab, *09-	51 "	1295 mm

	Y inch	Y mm
DODGE Ram 1500, 2-dr Single Cab, 09-	51 "	1295 mm
DODGE Ram 1500, 4-dr Crew Cab, 09-	50 <sup>5</sup> / <sub>8</sub> "	1285 mm
DODGE Ram 1500, 4-dr Double Cab, 09-	50 <sup>5</sup> / <sub>8</sub> "	1285 mm
DODGE Ram 2500 / 3500, 2-dr Standard Cab, *09-	51 "	1295 mm
DODGE Ram 2500 / 3500, 4-dr Crew Cab, *09-	50 <sup>5</sup> / <sub>8</sub> "	1285 mm
DODGE Ram 2500 / 3500, 4-dr Mega Cab, *09-	50 <sup>5</sup> / <sub>8</sub> "	1285 mm
DODGE Ram 2500 / 3500, 4-dr Quad Cab, *09-	50 <sup>5</sup> / <sub>8</sub> "	1285 mm

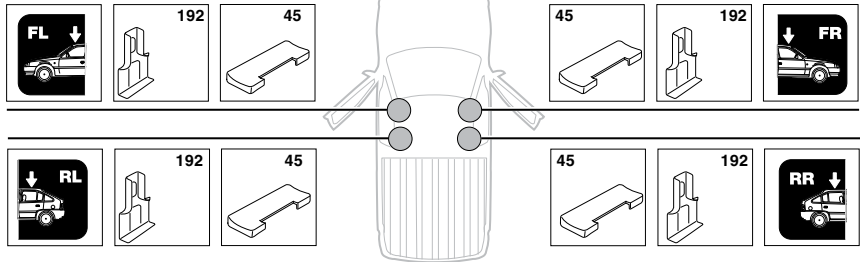
**4**



5

DODGE Ram 1500, 2-dr Single Cab, 09-

DODGE Ram 2500 / 3500, 2-dr Standard Cab, \*09-



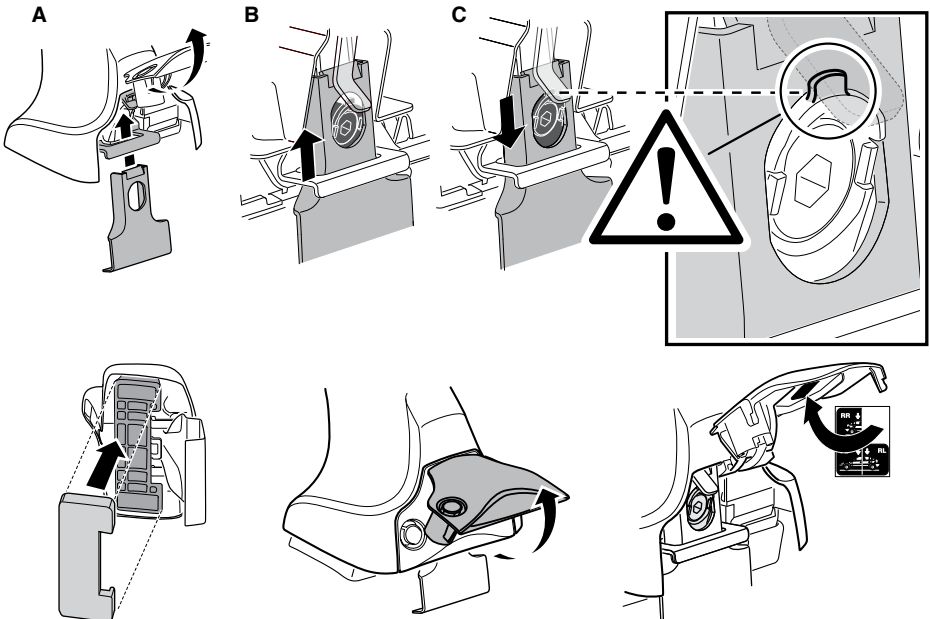
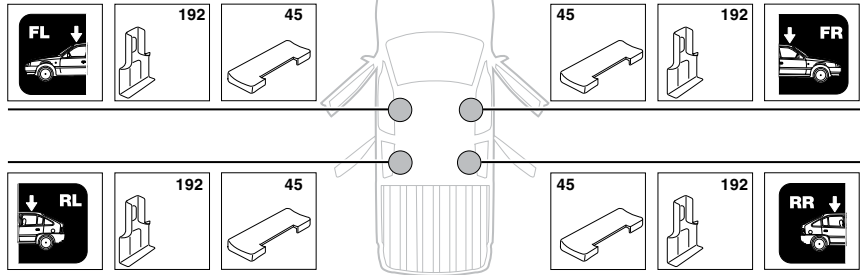
DODGE Ram 1500, 4-dr Crew Cab, 09-

DODGE Ram 1500, 4-dr Double Cab, 09-

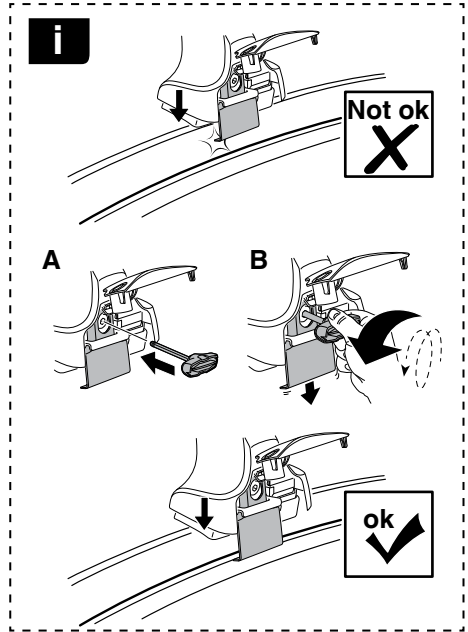
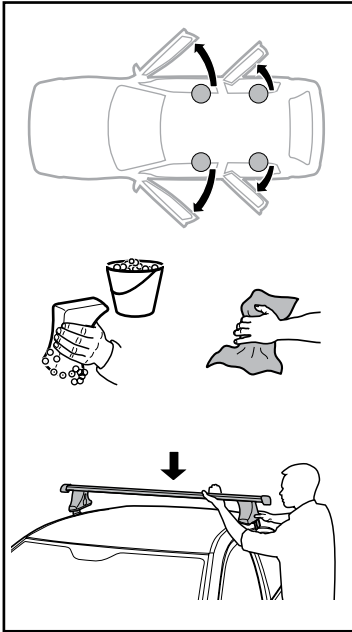
DODGE Ram 2500 / 3500, 4-dr Crew Cab, \*09-

DODGE Ram 2500 / 3500, 4-dr Mega Cab, \*09-

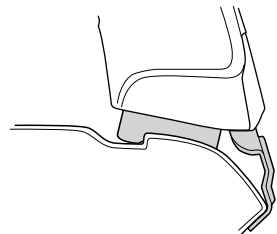
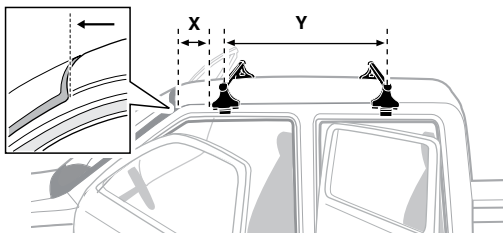
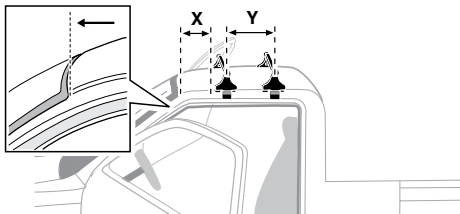
DODGE Ram 2500 / 3500, 4-dr Quad Cab, \*09-



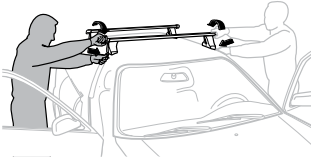
6



	X mm	Y mm	X inch	Y inch
DODGE Ram 1500, 2-dr Single Cab, 09-	110 mm	350 mm	4 1/4"	13 3/4"
DODGE Ram 1500, 4-dr Crew Cab, 09-	110 mm	800 mm	4 1/4"	31 1/2"
DODGE Ram 1500, 4-dr Double Cab, 09-	110 mm	800 mm	4 1/4"	31 1/2"
DODGE Ram 2500 / 3500, 2-dr Standard Cab, *09-	110 mm	350 mm	4 1/4"	13 3/4"
DODGE Ram 2500 / 3500, 4-dr Crew Cab, *09-	110 mm	800 mm	4 1/4"	31 1/2"
DODGE Ram 2500 / 3500, 4-dr Mega Cab, *09-	110 mm	800 mm	4 1/4"	31 1/2"
DODGE Ram 2500 / 3500, 4-dr Quad Cab, *09-	110 mm	800 mm	4 1/4"	31 1/2"



7



**GB/US** Tighten alternately  
**D** Die Schrauben abwechselnd anziehen  
**F** Serrer alternativement chaque côté  
**NL** Afwisselend aan de linker- en de rechterkant aandraaien  
**I** Alternare il serraggio delle viti  
**E** Apretar alternativamente  
**PT** Aperte alternadamente  
**S** Dra åt växelvis  
**FIN** Kierrä vuorotellen  
**EST** Pinguldage vaheldumisi  
**LAT** Pievelciēt pamišus  
**LIT** Užsukinėkite pakaitomis  
**PL** Śruby dokręcaj naprzemiennie  
**RU** Затягивайте попеременно

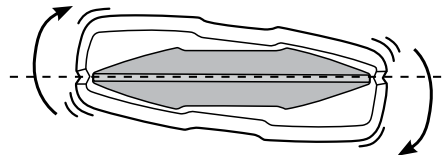
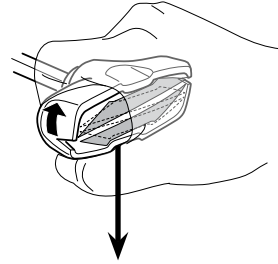
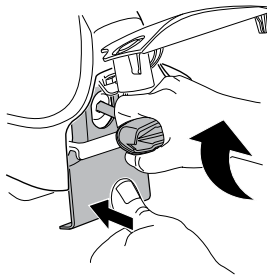
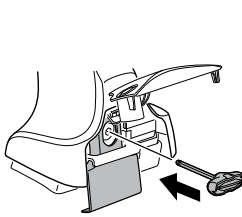
**CZ** Pokrétla bagazníka dokręcaj dokręcaj naprzemiennie.  
**SK** Doťahujte striedavo  
**SLO** Privijajte izmenično.  
**HR** Naizmjenično zategnite  
**HU** Egymástól függetlenül szorítandó  
**GR** Σφιγγετε εναλλάξ  
**TR** Dönüşümlü sıkın

**中文** 交替拧紧

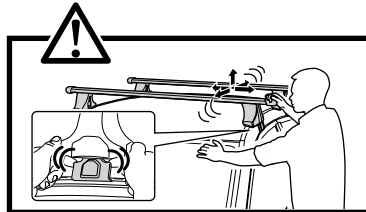
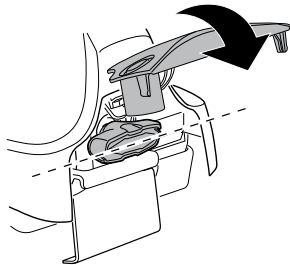
**한국어** 번갈아 가며 조이십시오.

**日本語** 交互に締め付けてください。

**ไทย** ชั้ในแบบสลับ



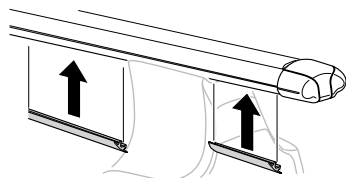
≈ 3 Nm

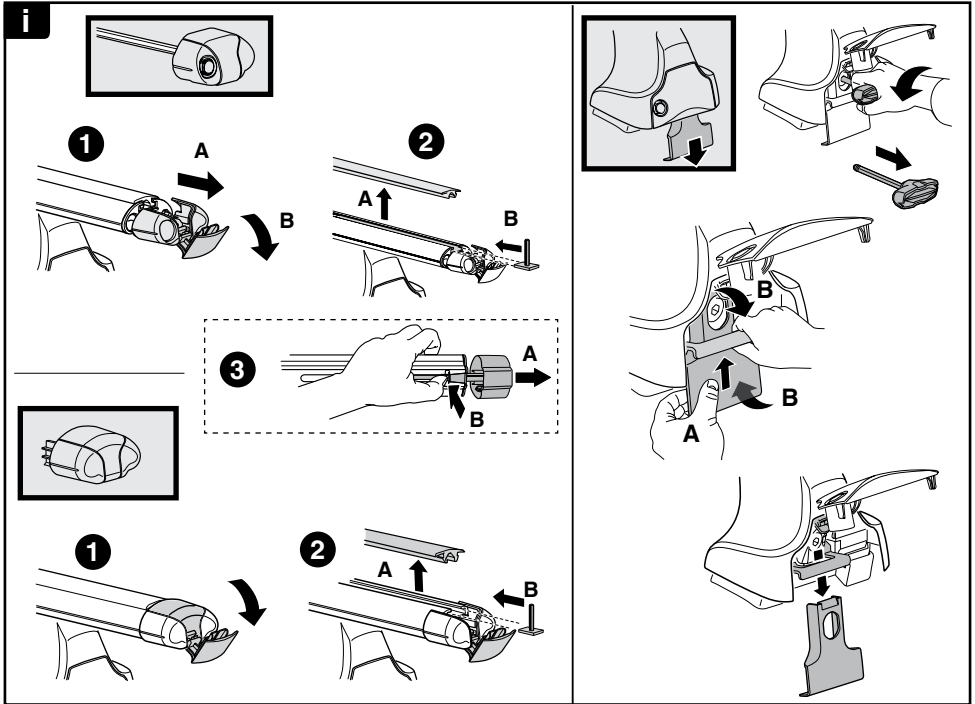


8

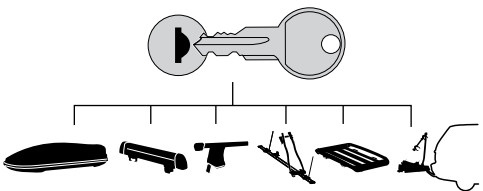


x1  
17 mm





**THULE**  
SWEDEN  
**ONE  
KEY  
SYSTEM**



- 544** (x4)
  - 596** (x6)
  - 588** (x8)
  - 510** (x10)
  - 452** (x12)
- NA  
EUR  
ASIA

