



## Thule Rapid System Kit 1856

# > Instructions

FIAT 500, 3-dr Hatchback, 07-/\*11-

\*North America

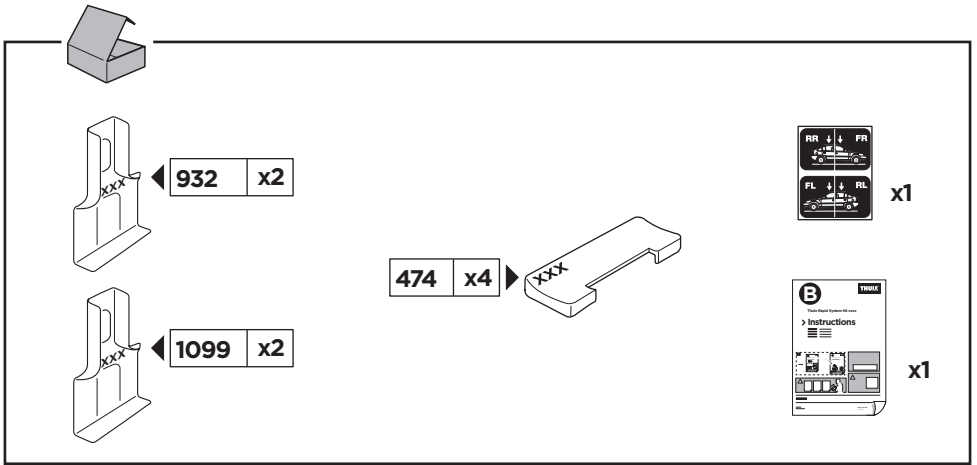
The diagram is divided into four main sections:

- Top Left:** A dashed box containing an information icon (i), a warning triangle, an illustration of a person reading instructions, and two instruction manuals. Manual 'B' is titled 'Thule Rapid System Kit 1856 > Instructions' and manual 'A' is titled 'Thule Rapid System 754 > Instructions'. An arrow points from manual B to manual A.
- Top Right:** A weight calculation diagram. It shows a bag labeled 'xx kg / xx lbs' plus a bar labeled '7 kg / 15,4 lbs' and two screws labeled '3 kg / 6,6 lbs'. Below this, an equals sign leads to a box containing 'Max. 50 kg' and 'Max. 110 lbs'.
- Bottom Left:** A dashed box containing a warning triangle, three instruction manuals (A, B, and 'Security'), and an illustration of a person reading a manual.
- Bottom Right:** A diagram of a car with arrows indicating the roof rack's position. A speedometer graphic shows a warning triangle at 130 km/h (80 Mph) and 80 km/h (50 Mph), with a note '40 km/h 25 Mph' below it.

ISO 11154-E

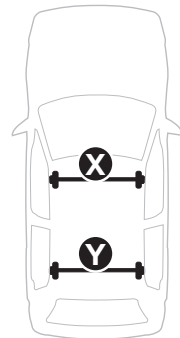
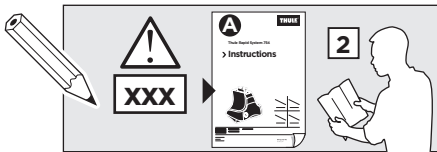
141856  
C.20170516  
519-1856-02

Bring your life  
thule.com



**1**

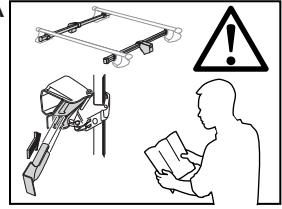
	X (scale)	X (mm)	X (inch)
FIAT 500, 3-dr Hatchback, 07-/*11-	33,5	986	38 <sup>7</sup> / <sub>8</sub>



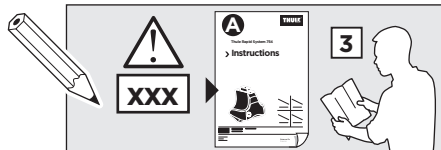
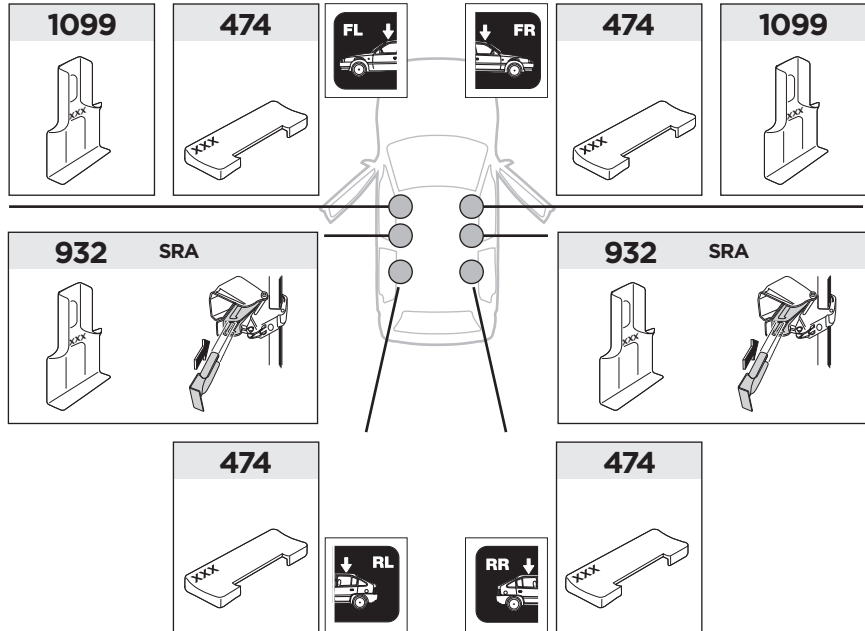
	Y (scale)	Y (mm)	Y (inch)
FIAT 500, 3-dr Hatchback, 07-/*11-	28	931	36 <sup>5</sup> / <sub>8</sub>

2

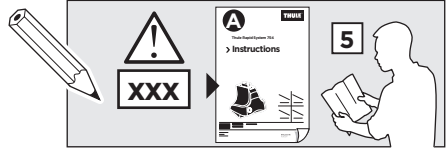
SRA



FIAT 500, 3-dr Hatchback, 07-/ \*11-



3



	W (mm)	Z (mm)	Y (mm)	W (inch)	Z (inch)	Y (inch)
FIAT 500, 3-dr Hatchback, 07-/*11-	250	600	270	9 7/8	23 5/8	10 5/8

