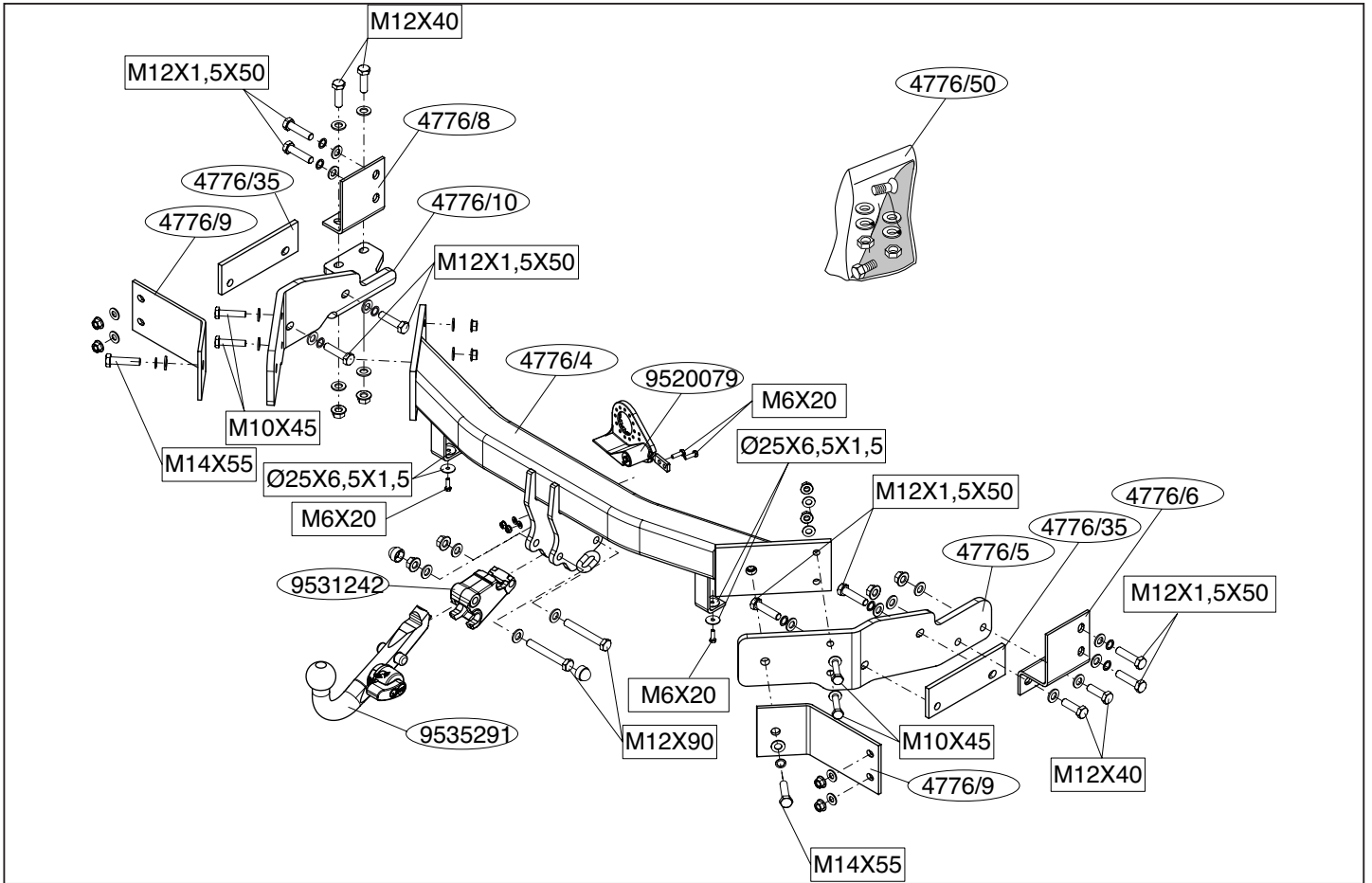


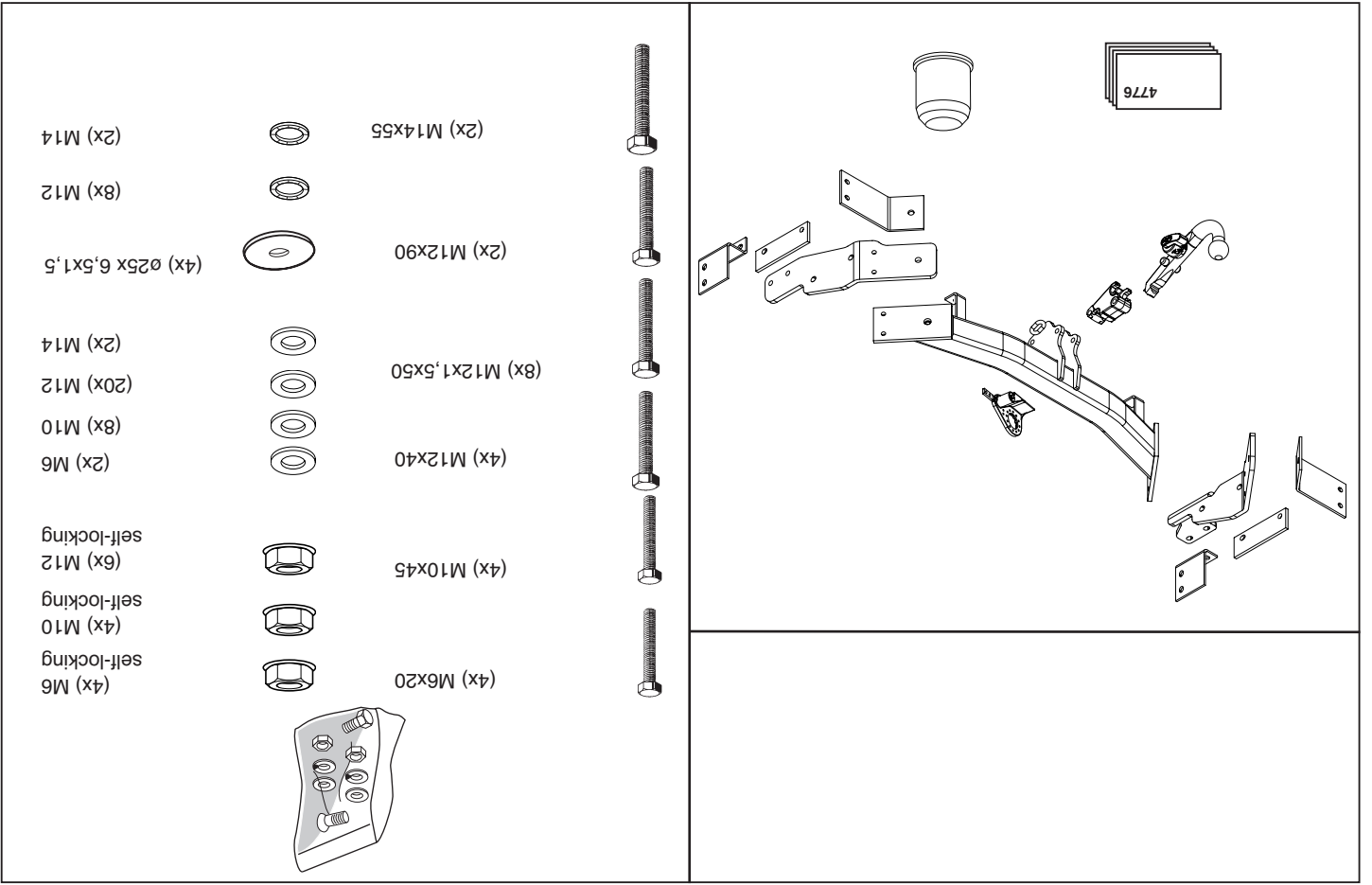
Fitting instructions
Make: Kia
Sorento\BL (JC); 2006->
Type: 4776

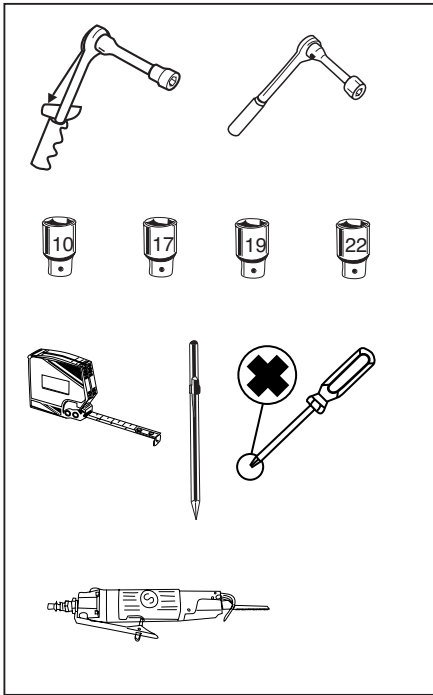
Permanently
linked to
quality



© 477670/18-10-2006/1

© 477670/18-10-2006/18





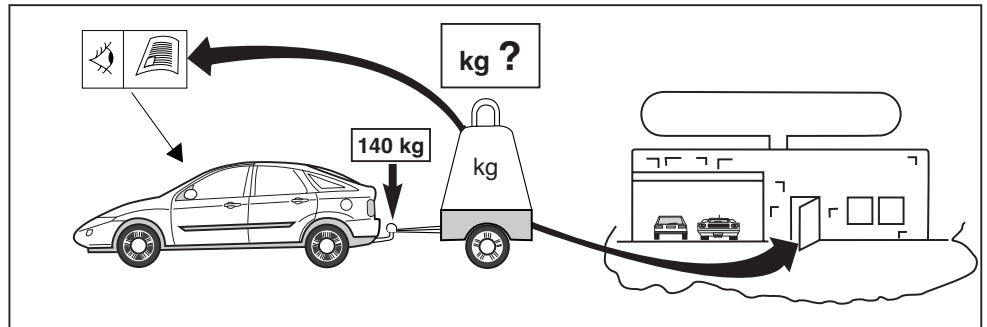
Couplingsclass: A50-X

euro tested

e11 00-6356

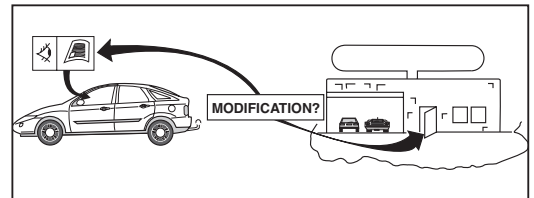
94/20/EC

D-Value : 14,9 kN



8.8

8



© 477670/18-10-2006/3



Dispositivo di traino tipo: 4776
 Per autoveicoli: Kia Sorrento\BL (JC); 2006->
 Tipo funzionale:

Classe e tipo di attacco: A50-X
 Omologazione: e11 00-6356
 Valore D: 14,9 kN
 Carico Verticale max. S: 140 kg
 Larghezza rimorchiabile per Caravan e T.A.T.S.: 2,45m vedere CARTA di CIRCOLAZIONE VEICOLO (motrice) + 70 cm = ..arrotondare ai 5 cm superiore (vedi D.M.28/05/85)
 Massa rimorchiabile: vedi carta di circolazione dell' autoveicolo

Per verificare l'idoneità del dispositivo di traino omologato a norma CEE 94/20, all'installazione sulla vettura su cui si intende procedere al montaggio, compilare la seguente formula (se necessario declassare la massa rimorchiabile):

$$D = \frac{T \times C}{T + C} \times 0,00981 = \leq 14,9 \text{ kN}$$

dove: T= Massa Complessiva Max. della motrice (in kg)
 C= Massa Rimorchiabile Max. della motrice (in kg)

DA COMPILARE PER IL COLLAUDO






DICHIARAZIONE DI CORRETTO MONTAGGIO: la sottoscritta Ditta dichiara di aver montato in maniera corretta ed in conformità/ alle prescrizioni sia del costruttore del veicolo che del costruttore del dispositivo stesso il seguente dispositivo di attacco meccanico:


tipo:.....
 Il dispositivo di attacco sopra indicato è stato installato su autoveicolo
 modello:.....
 targa:.....
 Data:.....

TIMBRO e FIRMA


Si dichiara inoltre di aver informato l'utente del veicolo sull'USO e MANUTENZIONE del dispositivo stesso.

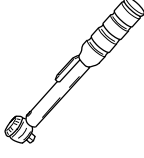
Torque settings for nuts and bolts (8.8)

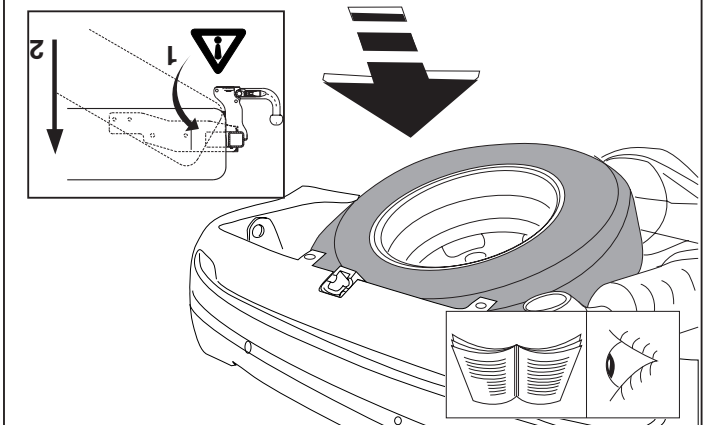
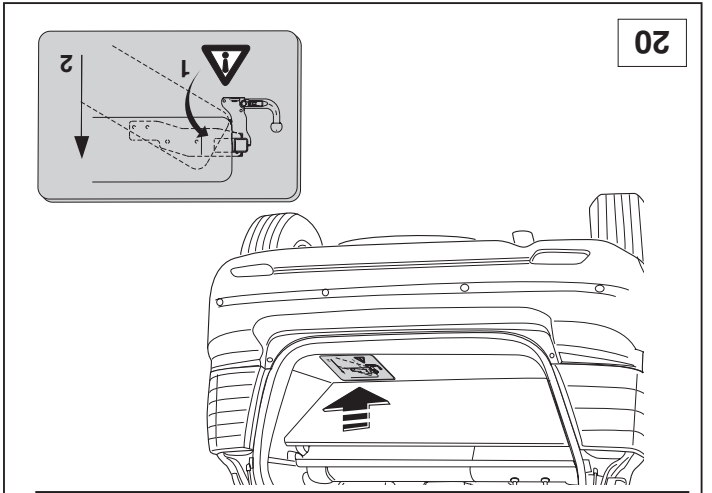
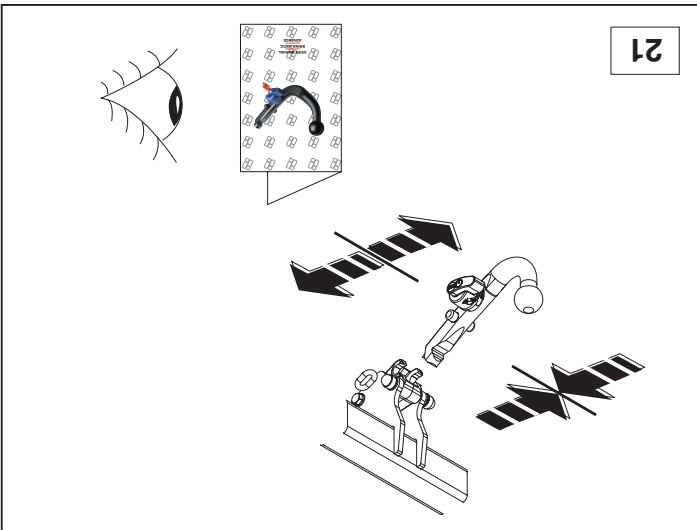
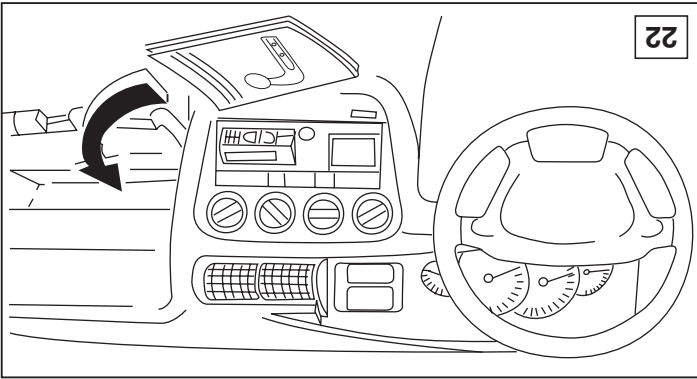
M6		10,1 Nm (with self-locking nut)
M10		48 Nm (with self-locking nut)
M12		84Nm (with self-locking nut)
M12x1,5		87 Nm (with self-locking nut)
M14		133 Nm


 1000km

+


 0km



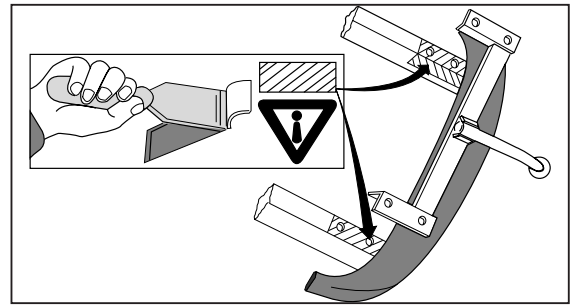


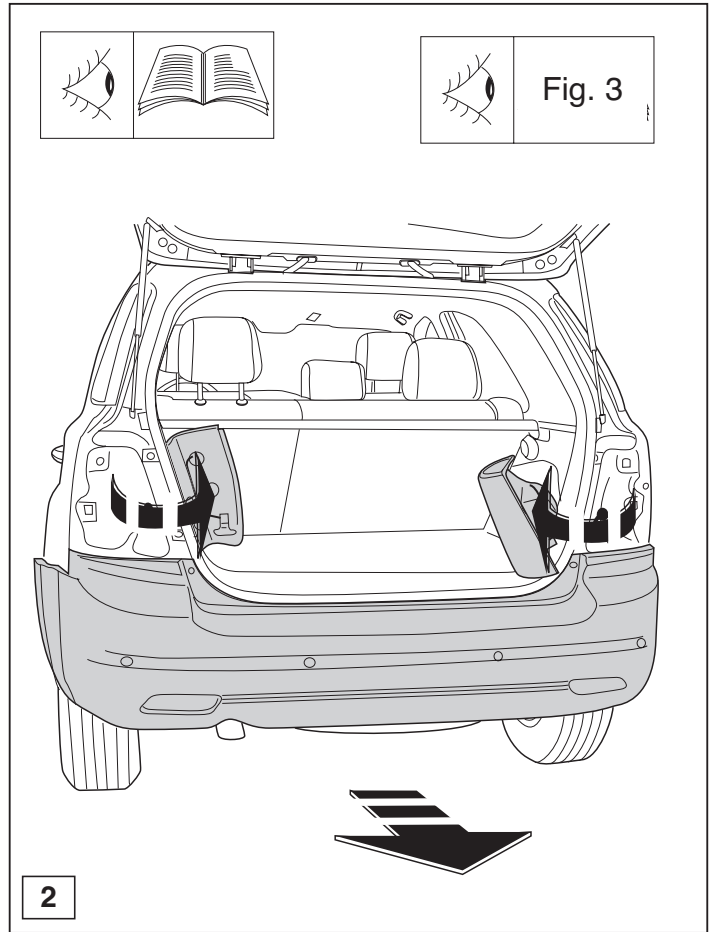
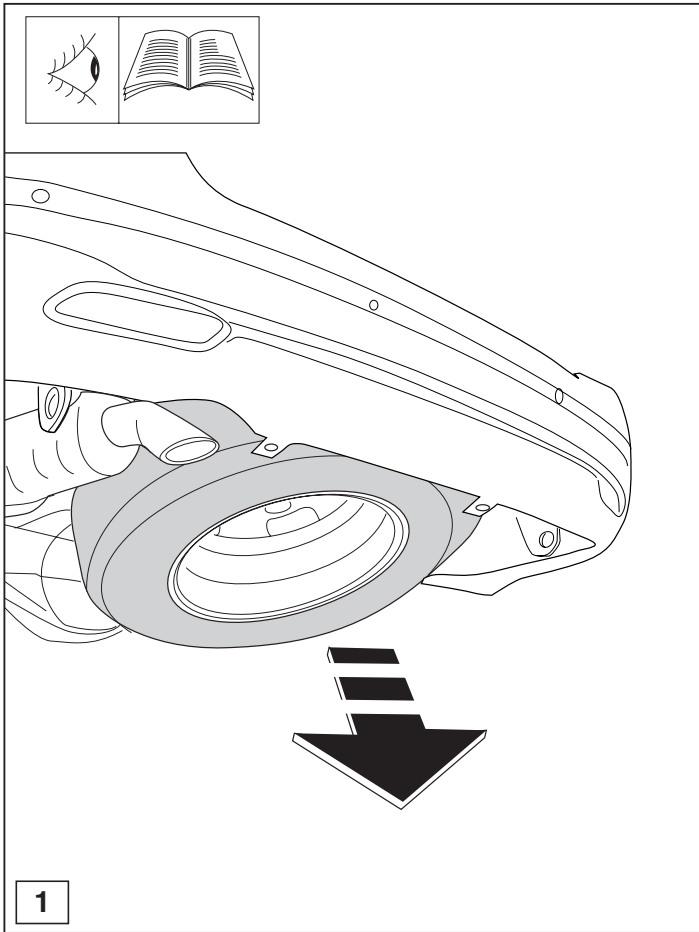
* Should this installation process entail the cutting of the bumper – conformation MUST be obtained by the installation engineer of the customer's acceptance prior to completion. Brink International do not accept responsibility for any matters arising as a result of this miscommunication.

NOTE:

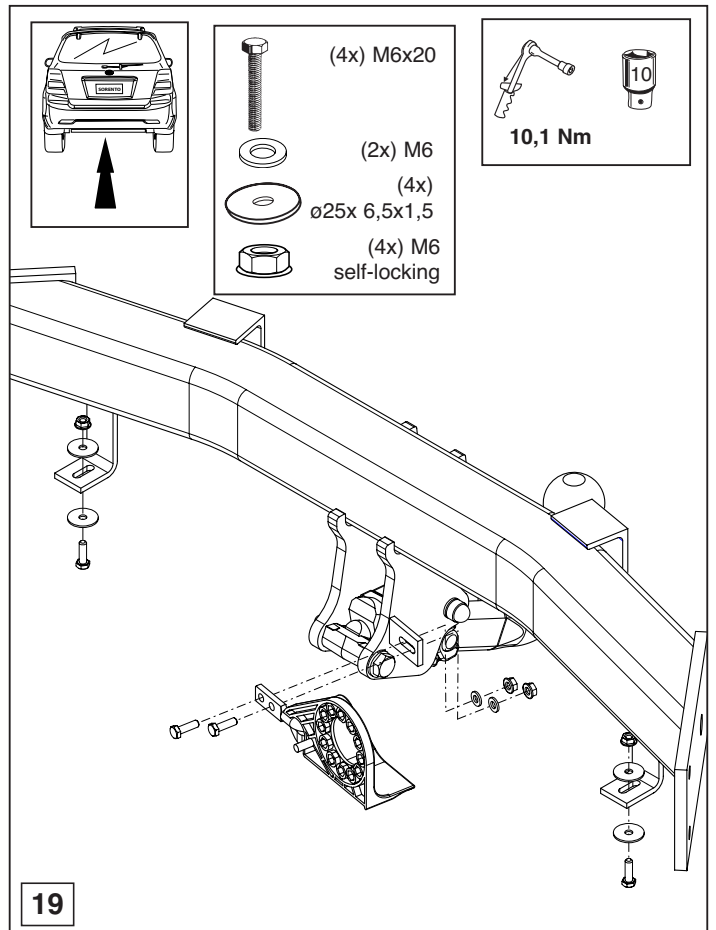
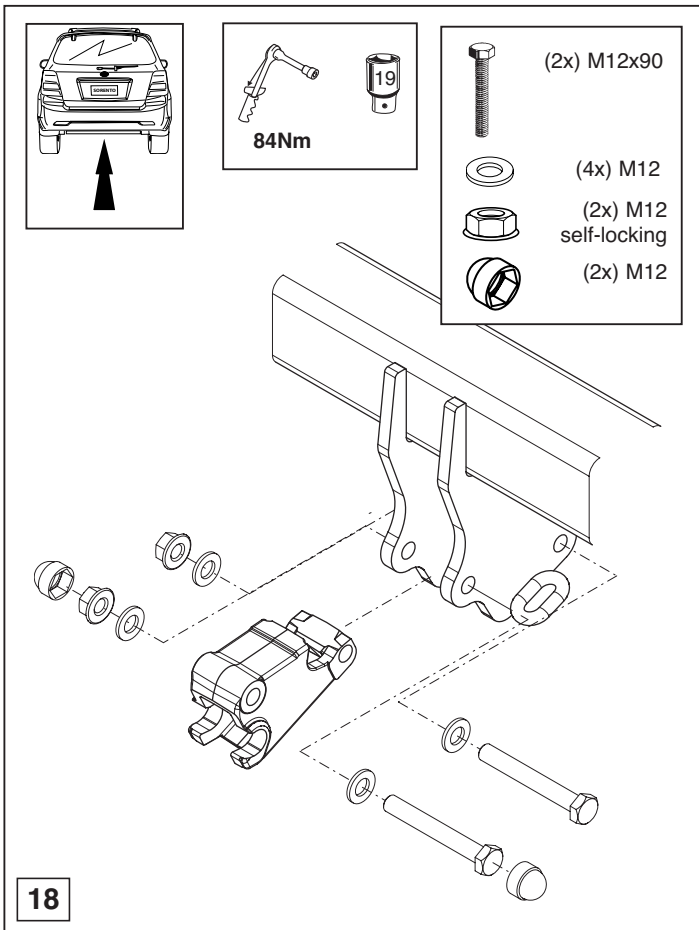
* Elektrische Anlage gemäß StVZO anbringen.
 Auskunft hierüber kann Ihr Fachhändler oder der TÜV geben.
 den:
 zulässige Anhängelast gegebenenfalls aus dem D-Wert nachgerechnet wer-
 zu entnehmen. Bei Änderungen des Fahrzeuggewichtes muß die höchst-
 * Die für das Fahrzeug zugelassene Anhängelast ist den Fahrzeug Unterlagen

HINWEISE:

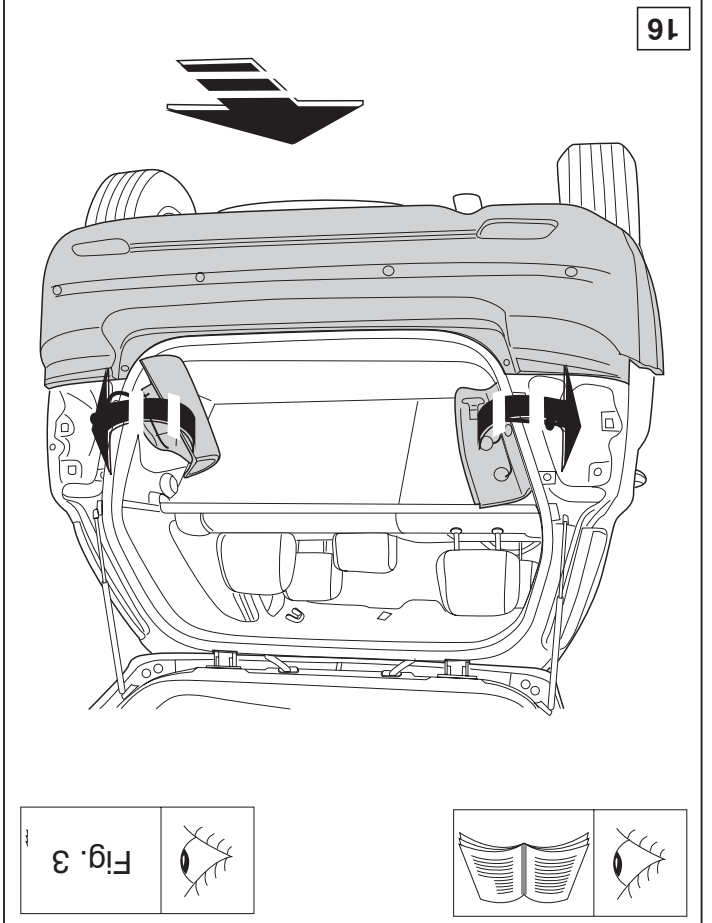
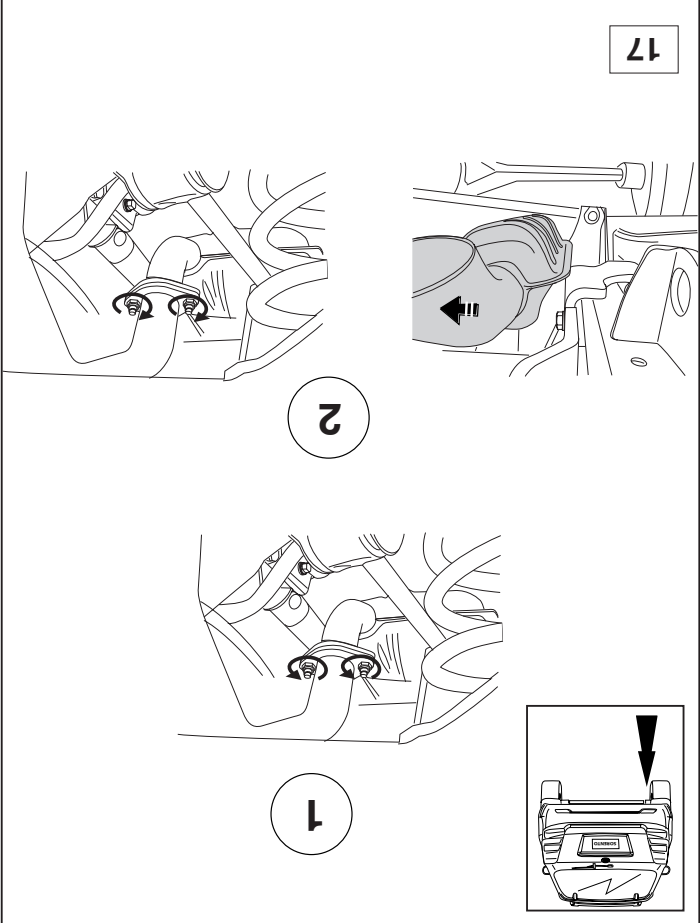
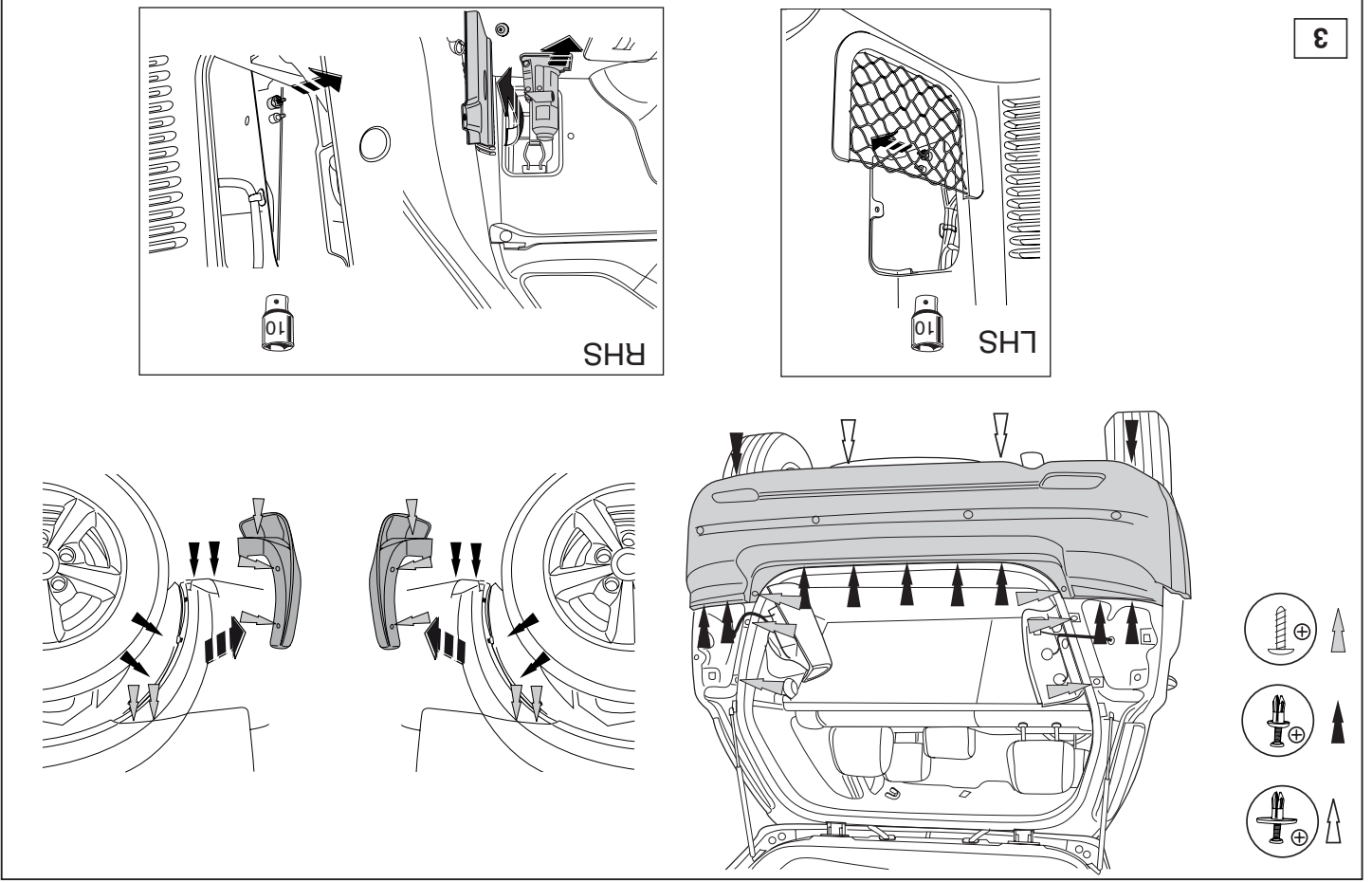


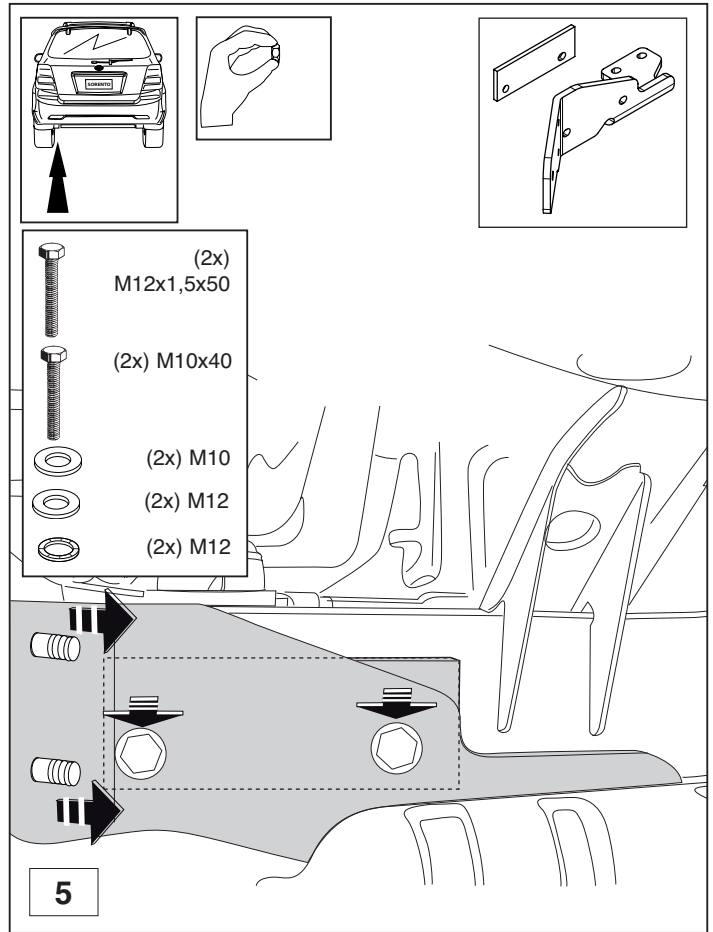
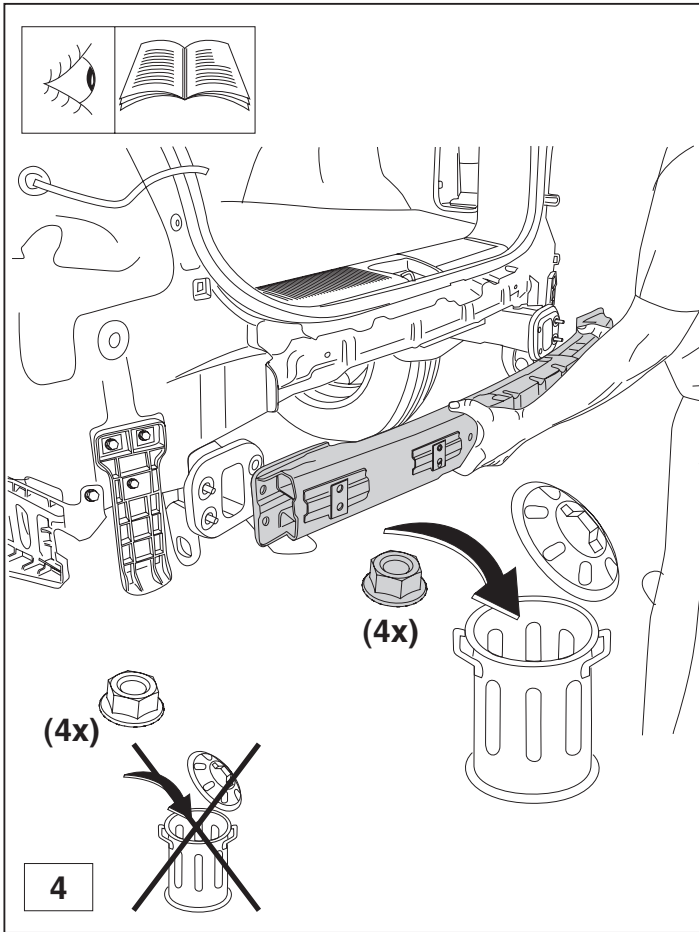


© 477670/18-10-2006/5

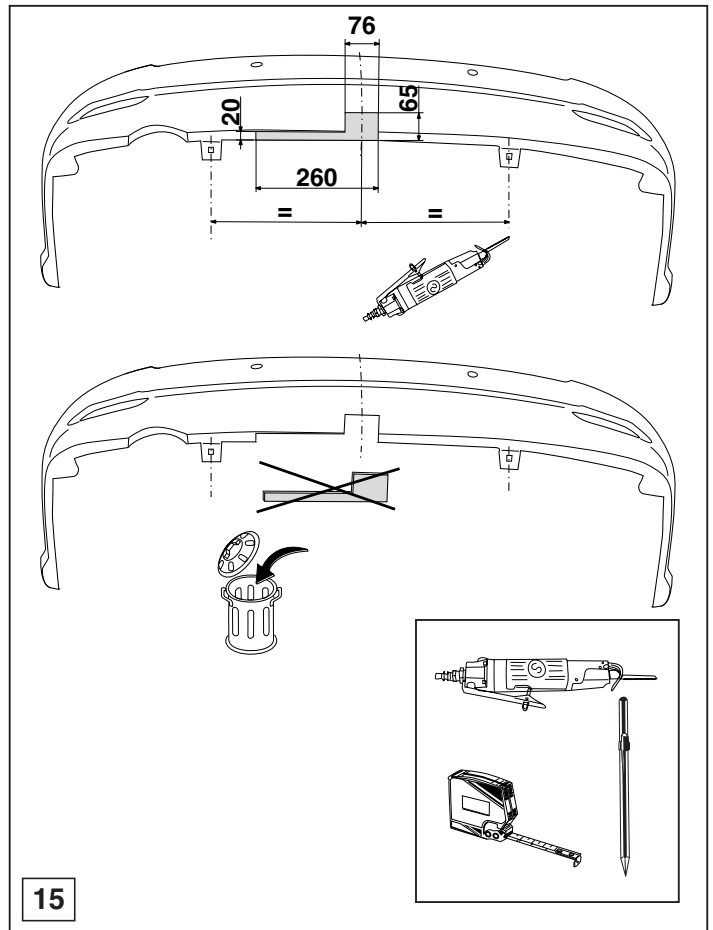
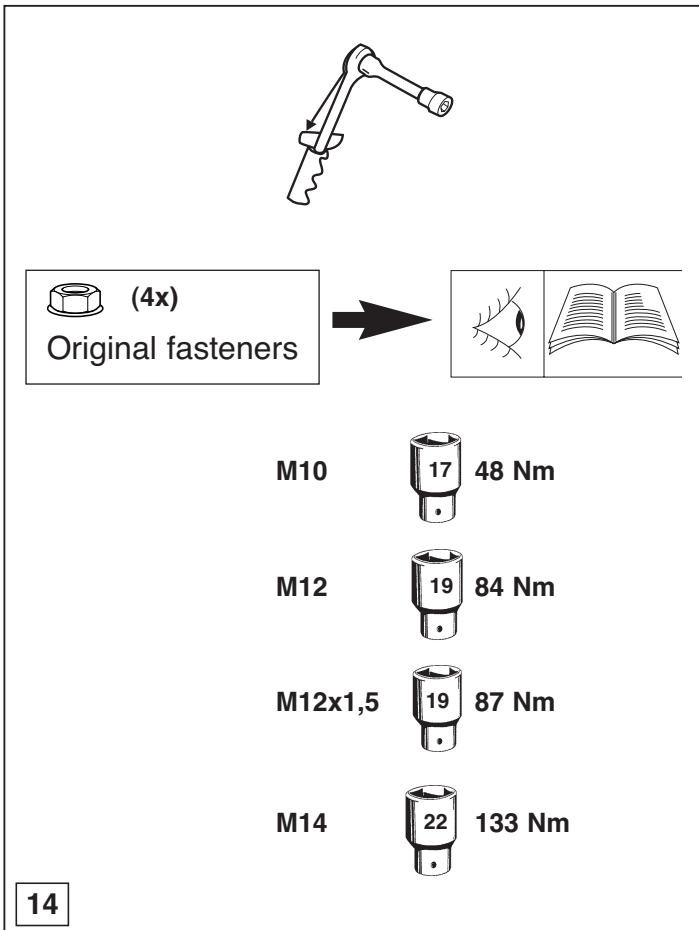


© 477670/18-10-2006/14

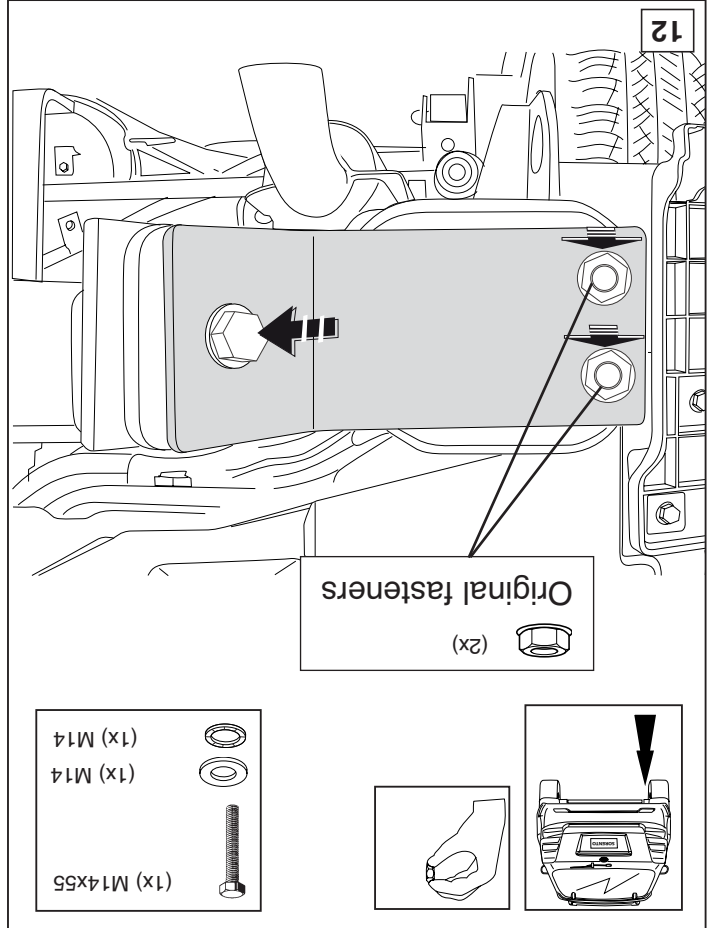
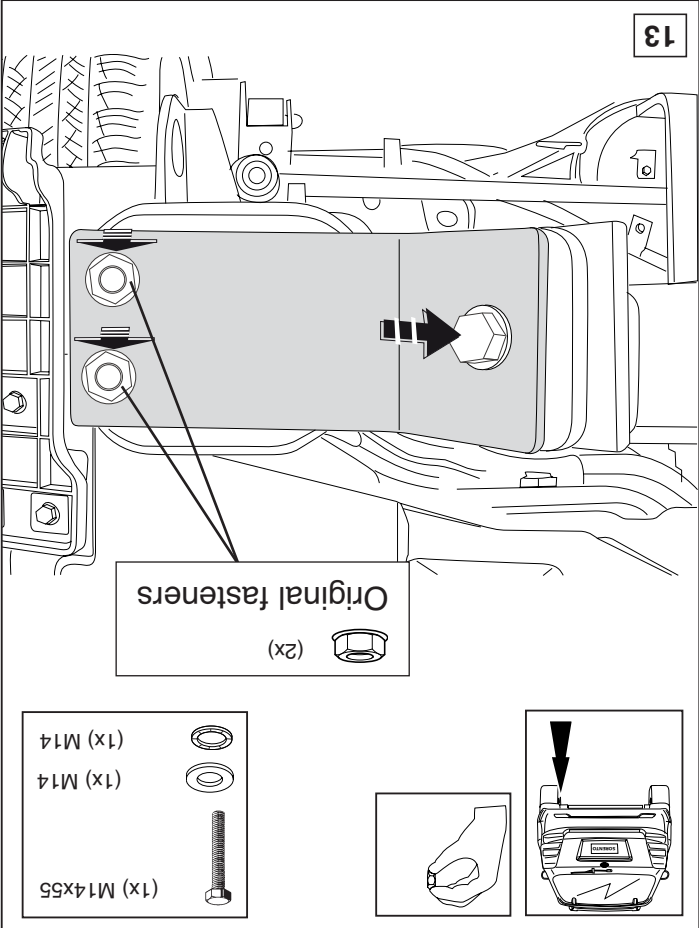
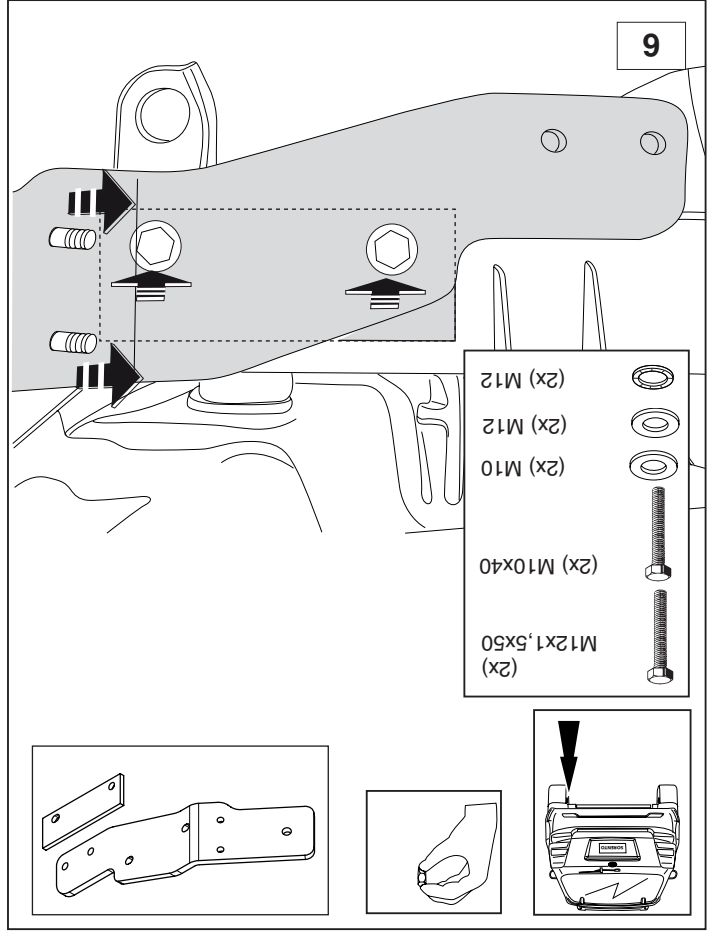
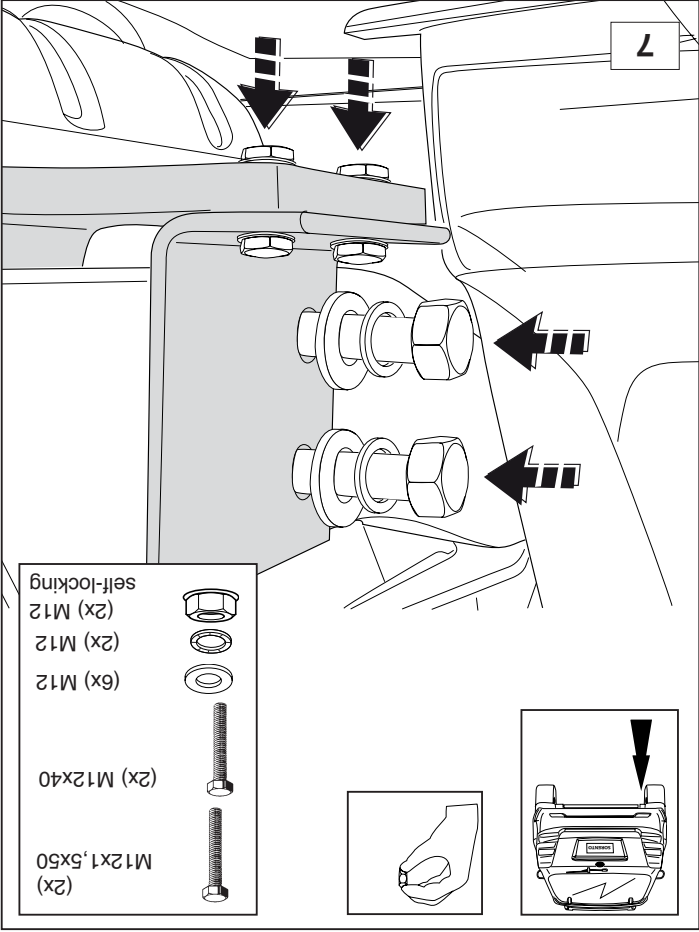


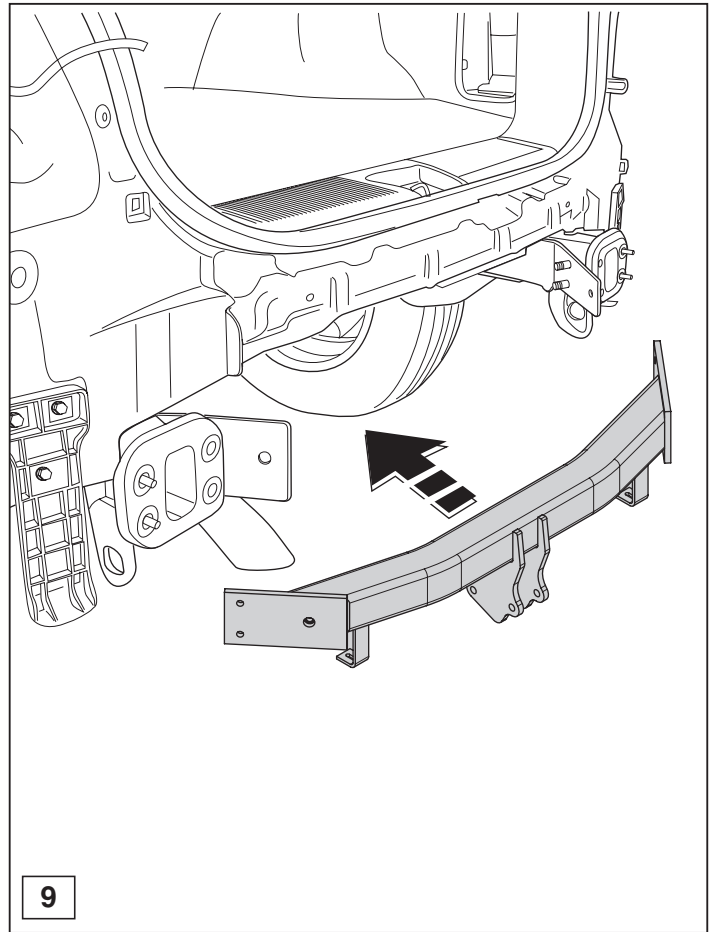
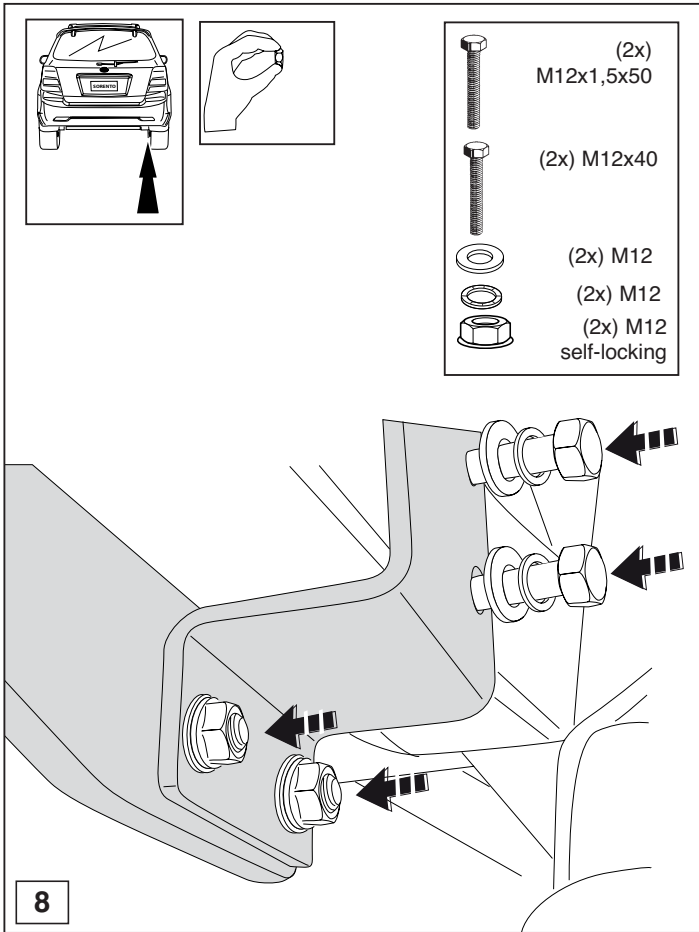


© 477670/18-10-2006/7

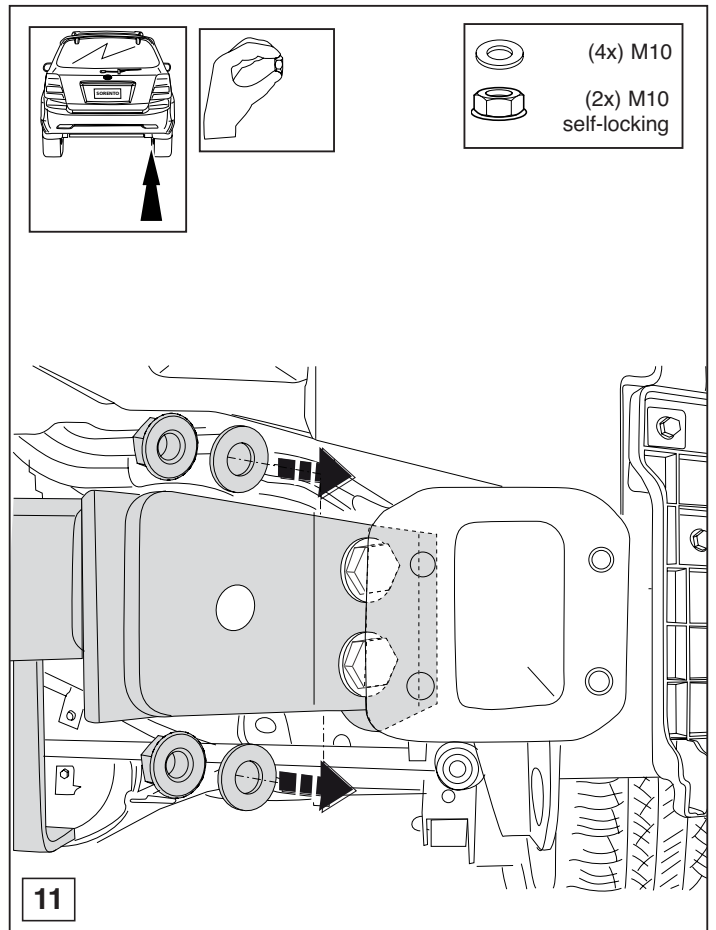
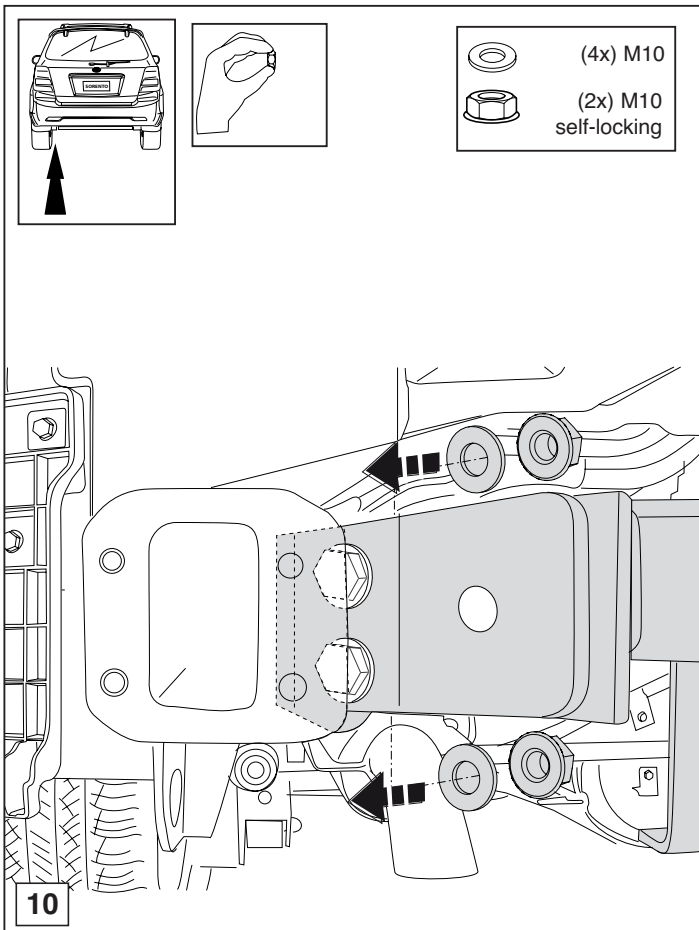


© 477670/18-10-2006/12





© 477670/18-10-2006/9



© 477670/18-10-2006/10