

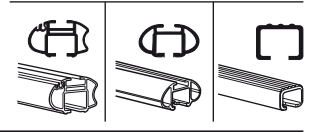
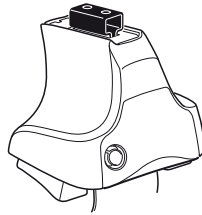
Kit 1297

RENAULT Megane, 3-dr Coupé, 97-02

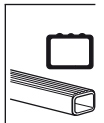
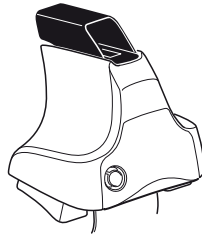
RENAULT Megane Classic, 4-dr Sedan, 97-02

RENAULT Megane, 5-dr Hatchback, 96-02

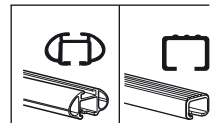
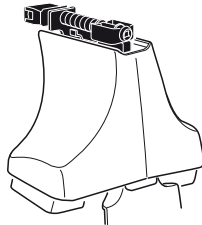
480R
754



480



750



THULE[®]
SWEDEN

Max. 50 kg
Max. 110 lbs

Kit XXXX
 instructions

x1

x4

x4

x4
 x4

480R/754

x1

x4

x4

x4

480

x1

x4

x4

750

x2 x2 x2 x4	x2	x2 x2 x4 x4	x2 x2	x2

x4

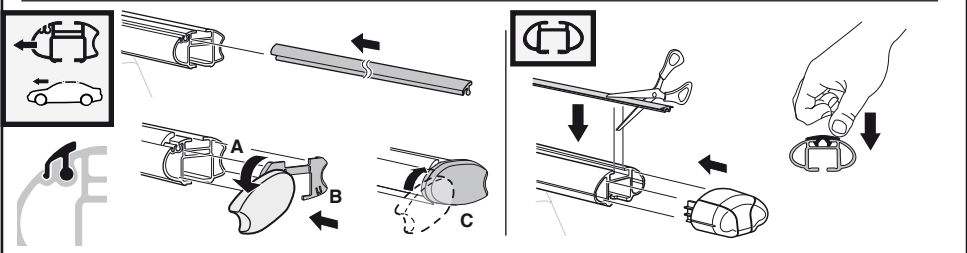
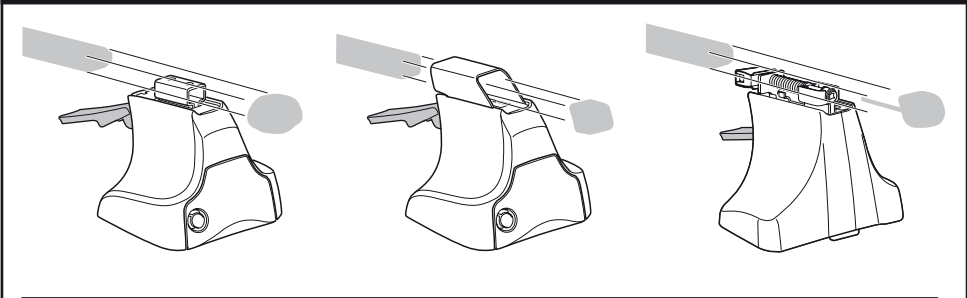
x2

x2

x1

x1

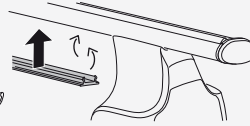
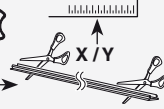
Kit



3



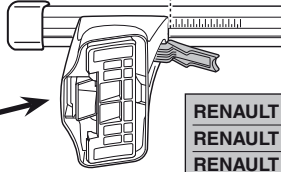
754



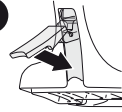
750



1

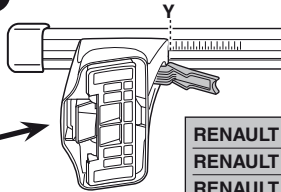


2

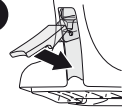


	X
RENAULT Megane, 3-dr Coupé, 97-02	26,5
RENAULT Megane Classic, 4-dr Sedan, 97-02	26,5
RENAULT Megane, 5-dr Hatchback, 96-02	26,5

1



2



	Y
RENAULT Megane, 3-dr Coupé, 97-02	27
RENAULT Megane Classic, 4-dr Sedan, 97-02	28,5
RENAULT Megane, 5-dr Hatchback, 96-02	28

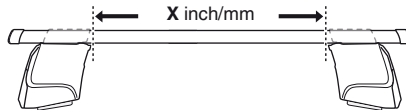


480R



480

1

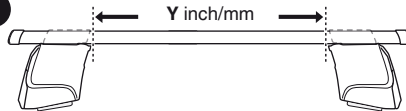


2

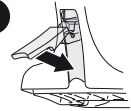


	X inch	X mm
RENAULT Megane, 3-dr Coupé, 97-02	36 1/8"	916 mm
RENAULT Megane Classic, 4-dr Sedan, 97-02	36 1/8"	916 mm
RENAULT Megane, 5-dr Hatchback, 96-02	36 1/8"	916 mm

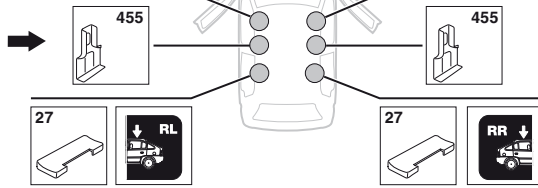
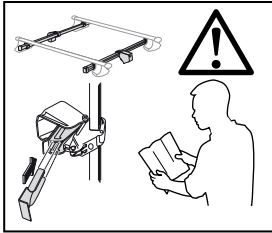
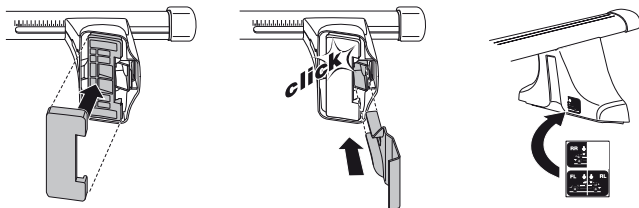
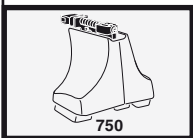
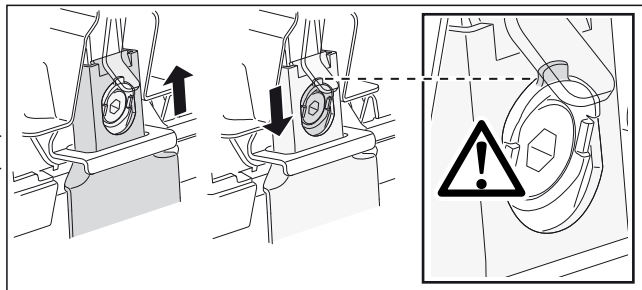
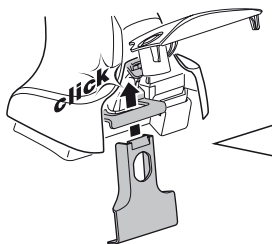
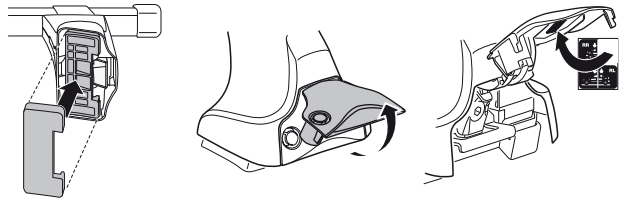
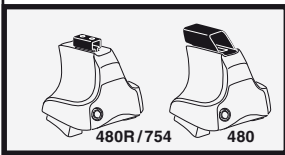
1



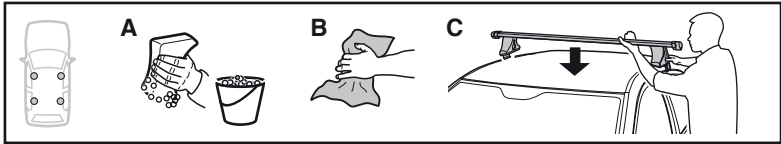
2



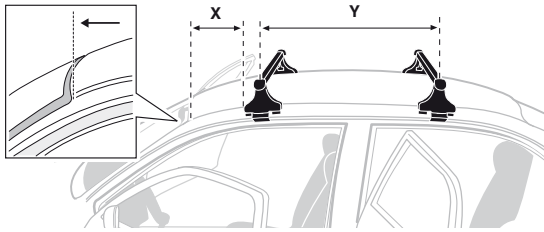
	Y inch	Y mm
RENAULT Megane, 3-dr Coupé, 97-02	36 1/4"	921 mm
RENAULT Megane Classic, 4-dr Sedan, 97-02	36 7/8"	936 mm
RENAULT Megane, 5-dr Hatchback, 96-02	36 5/8"	931 mm

4**RENAULT Megane, 3-dr Coupé, 97-02****SRA****RENAULT Megane Classic, 4-dr Sedan, 97-02****RENAULT Megane, 5-dr Hatchback, 96-02**

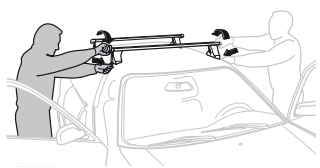
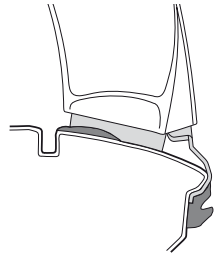
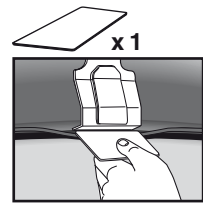
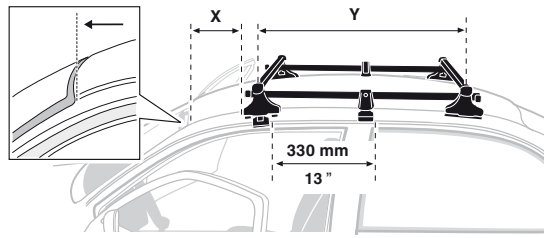
5



	X mm	Y mm	X inch	Y inch
RENAULT Megane, 3-dr Coupé, 97-02	220 mm	650 mm	8 5/8" "	25 5/8" "
RENAULT Megane Classic, 4-dr Sedan, 97-02	220 mm	650 mm	8 5/8" "	25 5/8" "
RENAULT Megane, 5-dr Hatchback, 96-02	220 mm	650 mm	8 5/8" "	25 5/8" "



RENAULT Megane, 3-dr Coupé, 97-02



- GB/US** Tighten alternately
- D** Die Schrauben abwechselnd anziehen
- F** Serrer alternativement chaque côté
- NL** Afwisselend aan de linker- en de rechterkant aandraaien
- I** Alternare il serraggio delle viti
- E** Apretar alternativamente
- PT** Aperte alternadamente
- S** Dra åt växelvis
- FIN** Kierrä vuorotellen
- EST** Pinguldage vaheldumisi
- LAT** Pielvelciēt pamīšus
- LIT** Užsukinėkite pakaitomis
- PL** Śruby dokręcaj naprzemiennie
- RU** Затягивайте попеременно

- CZ** Pokręťta bagażníka dokręcaj dokręcaj naprzemiennie.
- SK** Dofahujte striedavo
- SLO** Privijajte izmenično.
- HR** Naizmjenično zategnite
- HU** Egymástól függetlenül szorítandó
- GR** Σφιγγείτε εναλλάξ
- TR** Dönüşümlü sıkın
- 中文** 交替拧紧
- 한국어** 번갈아가며 조이십시오.
- 日本語** 交互に締め付けてください。
- ไทย** ชั้้นในแบบสลับ

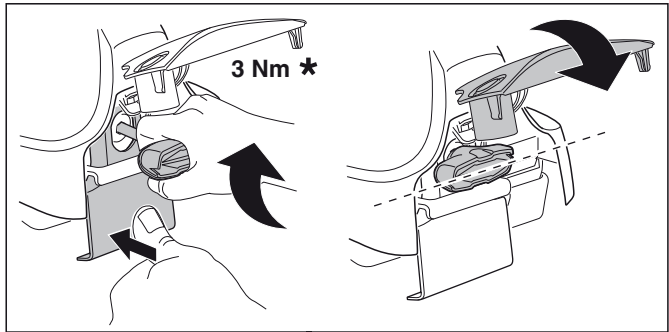
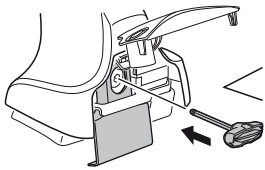
6



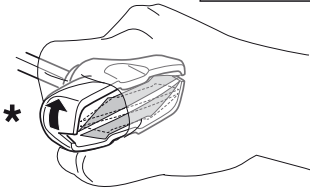
480R/754



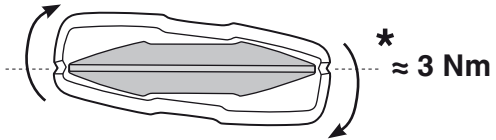
480



3 Nm *



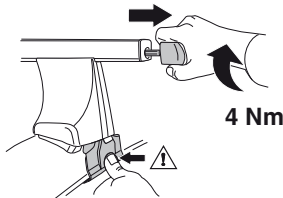
*



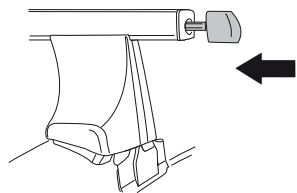
* ≈ 3 Nm



750



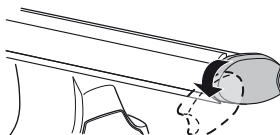
4 Nm



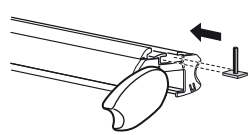
i



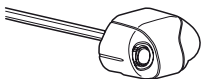
1



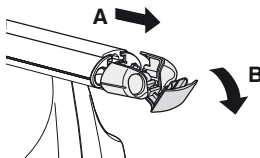
2



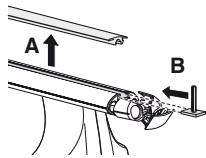
i



1



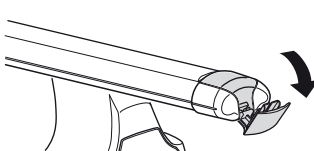
2



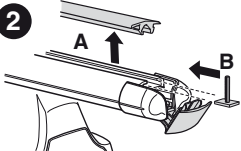
i

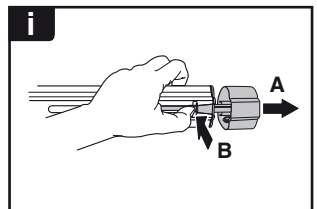
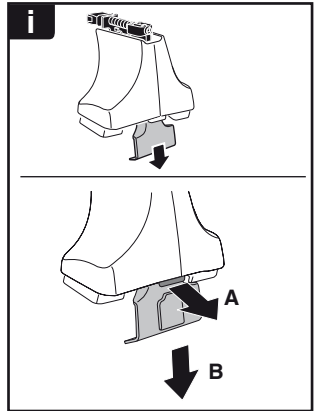
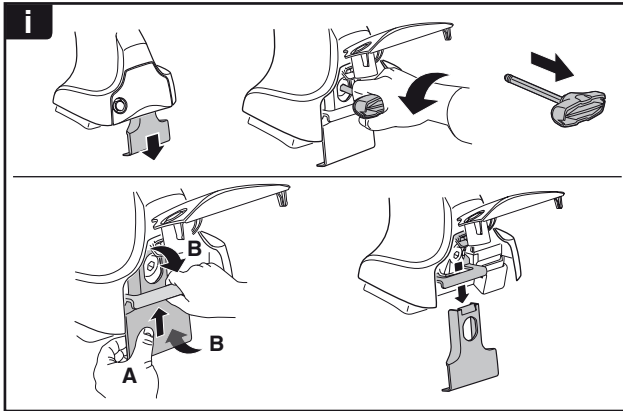
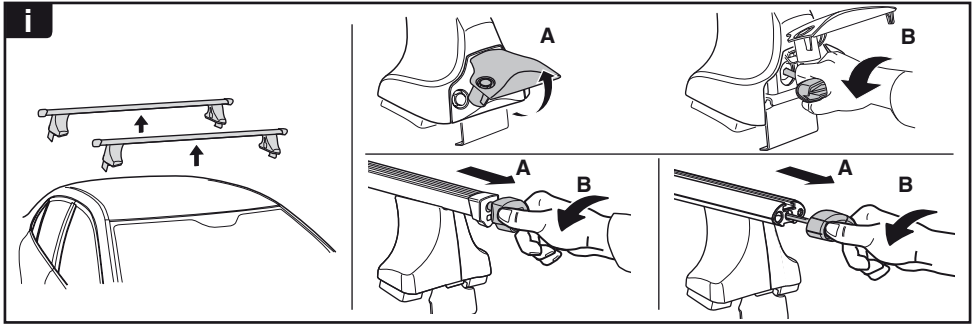


1



2

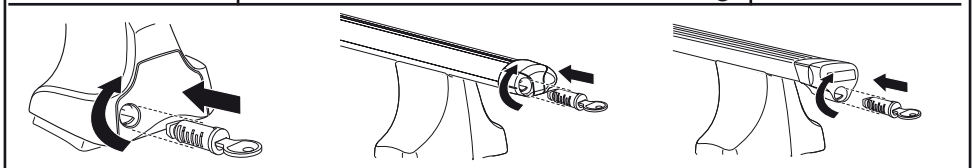




THULE
SWEDEN
**ONE
KEY
SYSTEM**



- 544 (x4)
- 596 (x6)
- 588 (x8)
- NA 510 (x10)
- EUR 452 (x12)
- ASIA



WW ▶ Thule Sweden AB, Box 69, 330 33 Hillerstorp, SWEDEN
NA ▶ Thule Inc., 42 Silvermine Road, Seymour, Connecticut 06483, USA

info@thule.com
customer.service@thule.com

www.thule.com