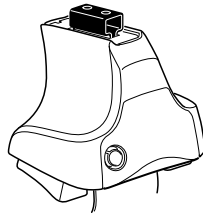
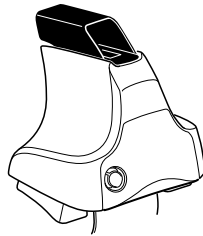
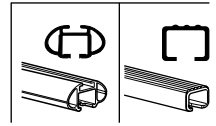


Kit 1636

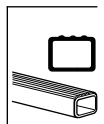
LEXUS CT 200h, 5-dr Hatchback, 11-



754 Rapid System
480R Rapid Traverse (North America)



480 Traverse (North America)



754 Rapid System
480R Rapid Traverse (North America)

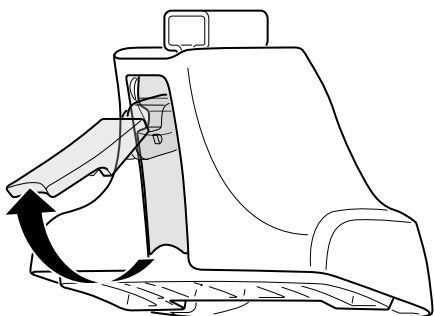
480 Traverse (North America)

(North America)

- Component 1: x2
- Component 2: x2 (23 mm)
- Component 3: x2 (23 mm)
- Component 4: x4
- Component 5: x4
- Component 6: x1 (17 mm)
- Component 7: x2 (23 mm)
- Component 8: x2
- Component 9: x2
- Component 10: x2
- Component 11: x2 (23 mm)
- Component 12: x2

- Component 1: x2 (1163)
- Component 2: x2 (1164)
- Component 3: x2 (204)
- Component 4: x2 (206)
- Component 5: x1 (Directional diagram with R/R, L/R, F/L, B/L labels)

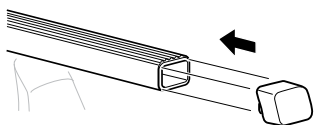
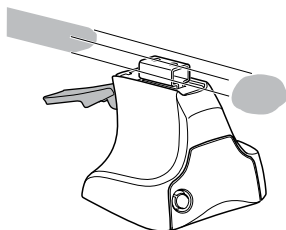
1



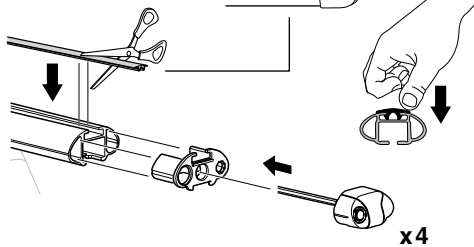
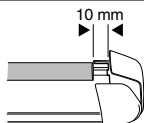
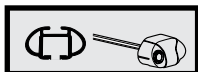
2



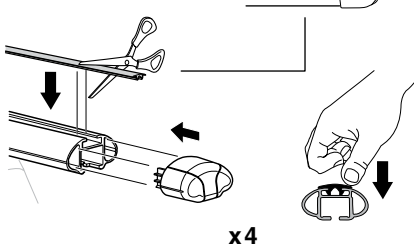
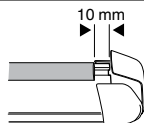
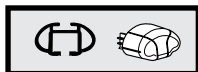
754 Rapid System
480R Rapid Traverse
(North America)



x4



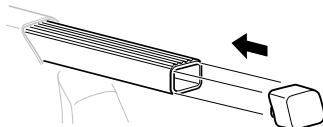
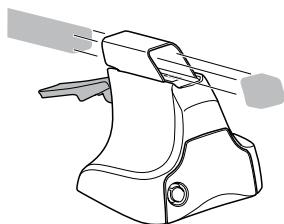
x4



x4

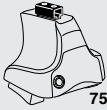


480 Traverse
(North America)

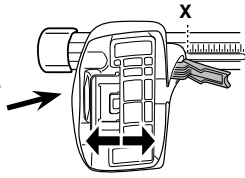


x4

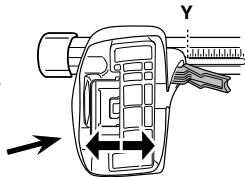
3



754 Rapid System



	X
LEXUS CT 200h, 5-dr Hatchback, 11-	29



	Y
LEXUS CT 200h, 5-dr Hatchback, 11-	28

3



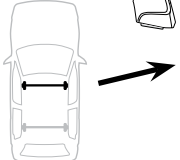
480R Rapid Traverse



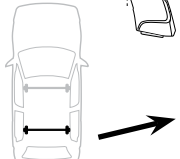
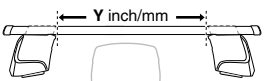
480 Traverse



(North America)

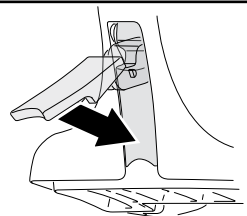


	X inch	X mm
LEXUS CT 200h, 5-dr Hatchback, 11-	37"	941 mm



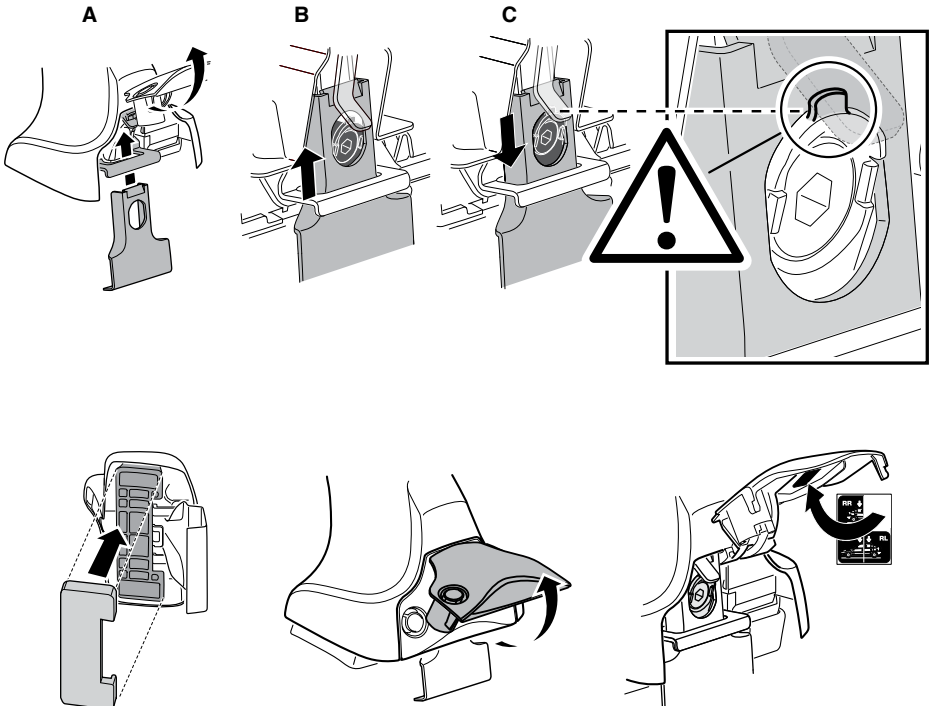
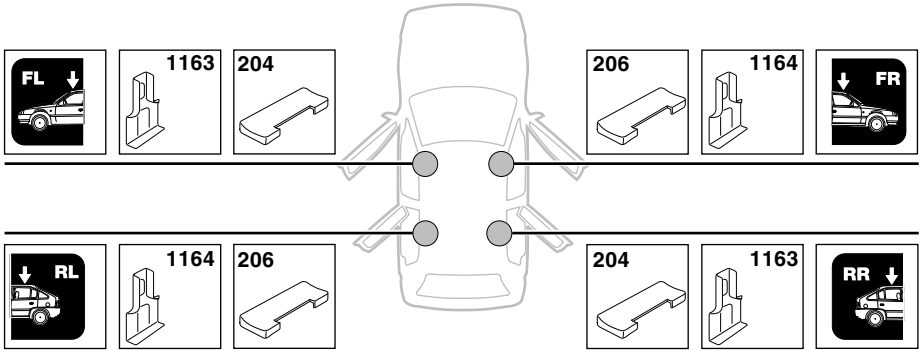
	Y inch	Y mm
LEXUS CT 200h, 5-dr Hatchback, 11-	36 5/8"	931 mm

4

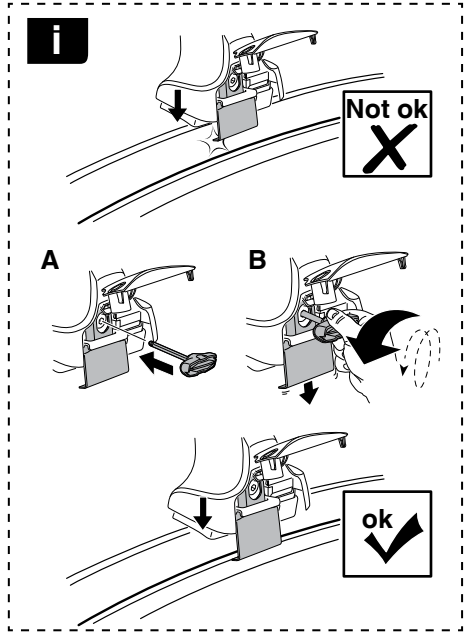
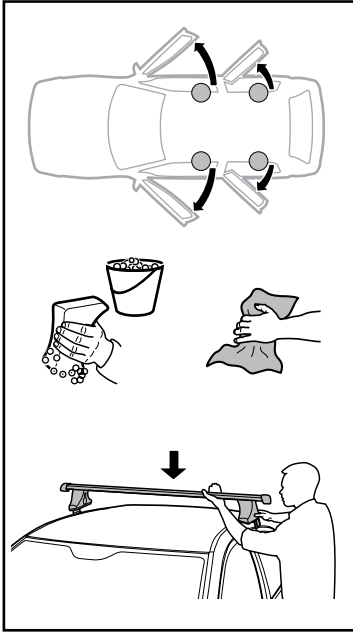


5

LEXUS CT 200h, 5-dr Hatchback, 11-

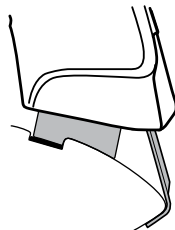
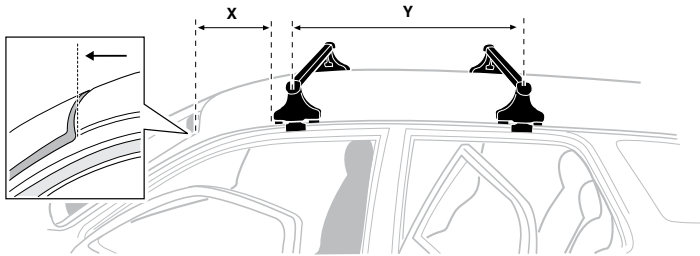


6

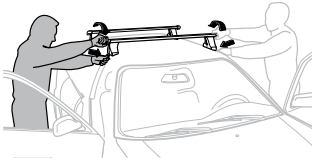


LEXUS CT 200h, 5-dr Hatchback, 11-

X mm	Y mm	X inch	Y inch
200 mm	700 mm	7 7/8"	27 1/2"



7



GB/US	Tighten alternately
D	Die Schrauben abwechselnd anziehen
F	Serrer alternativement chaque côté
NL	Afwisselend aan de linker- en de rechterkant aandraaien
I	Alternare il serraggio delle viti
E	Apertar alternativamente
PT	Aperte alternadamente
S	Dra åt växelvis
FIN	Kierrä vuorotellen
EST	Pinguldage vaheldumisi
LAT	Pielveiciet pamišus
LIT	Užsukinėkite pakaitomis
PL	Śruby dokręcaj naprzemiennie
RU	Загряивайте попеременно

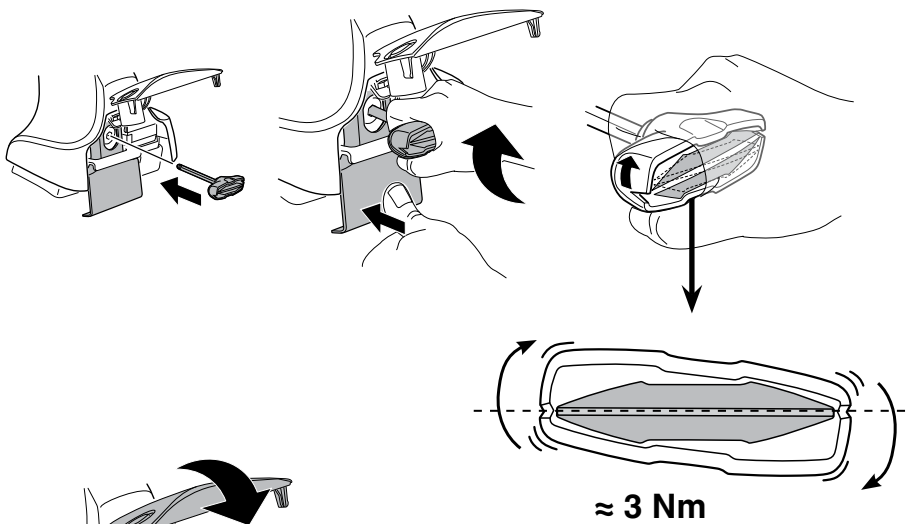
CZ	Pokręřta багаžnika dokręcaj naprzemiennie.
SK	Dofahajte striedavo
SLO	Privijajte izmenično.
HR	Naizmjenično zategnite
HU	Egymástól függetlenül szorítandó
GR	Σφιγίγτες εναλλάξ
TR	Dönüşümlü sıkın

中文 交替拧紧

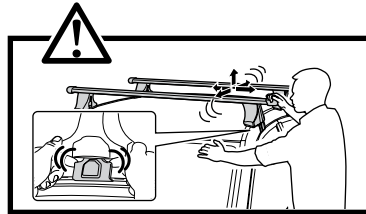
한국어 번갈아 가며 조이십시오.

日本語 交互に締め付けてください。

ไทย ชันในแบบสลับ



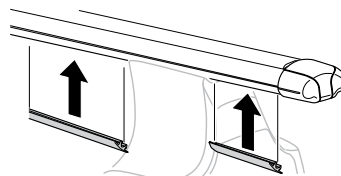
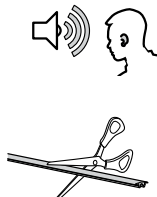
≈ 3 Nm

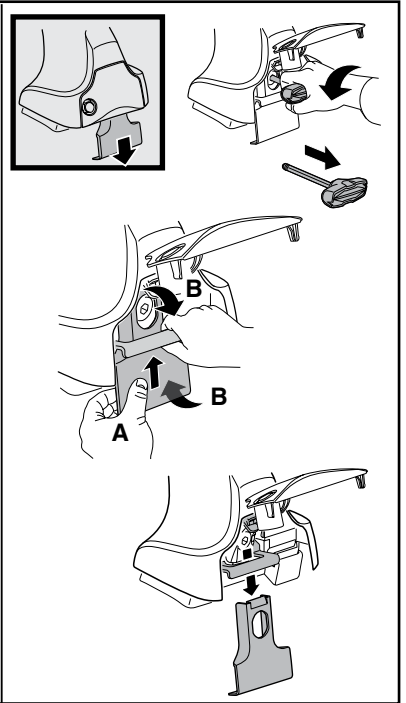
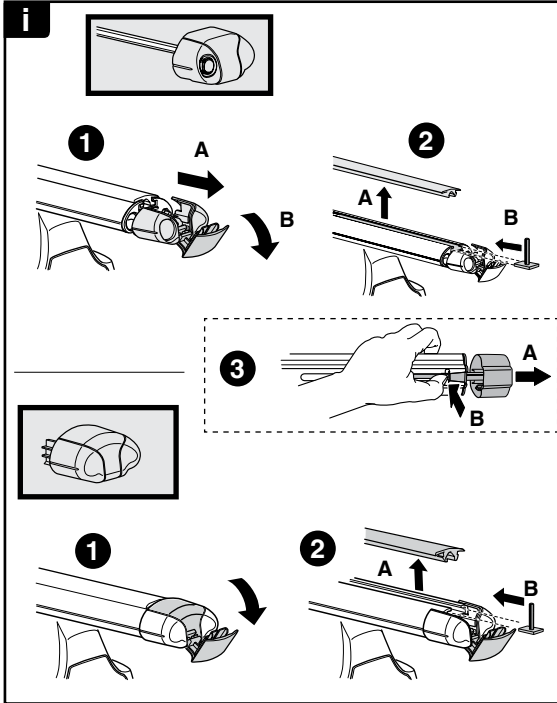
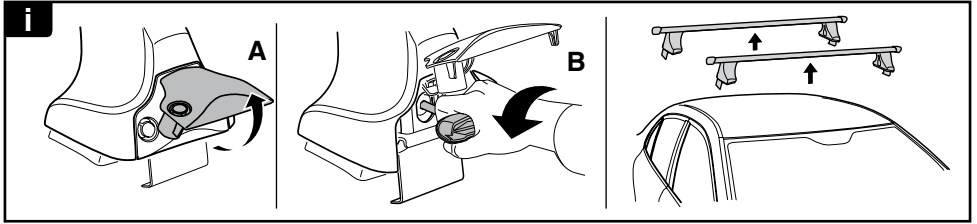


8

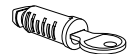
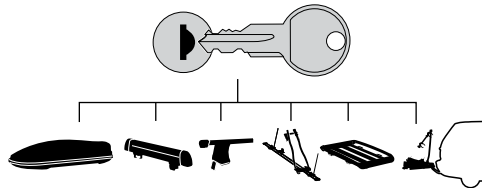


x1
17 mm





THULE
SWEDEN
**ONE
KEY
SYSTEM**



544 (x4)

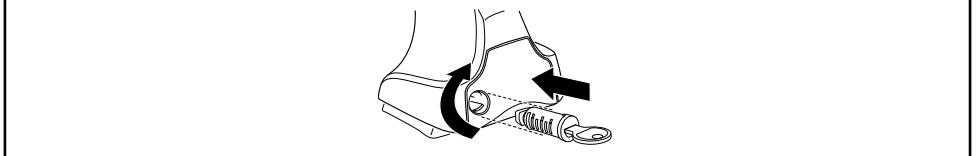
596 (x6)

588 (x8)

NA **510** (x10)

EUR **452** (x12)

ASIA



WW ▶ Thule Sweden AB, Box 69, 330 33 Hillerstorp, SWEDEN
NA ▶ Thule Inc., 42 Silvermine Road, Seymour, Connecticut 06483, USA

info@thule.com
customer.service@thule.com

www.thule.com

503-1636-01