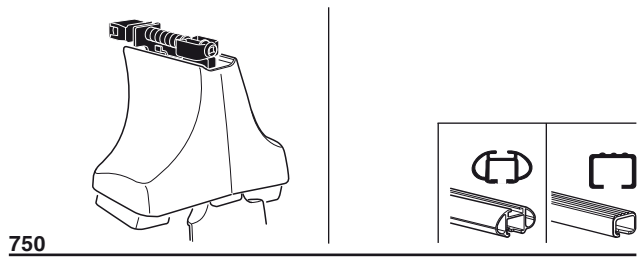
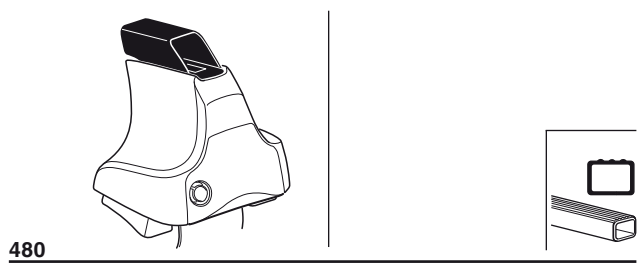
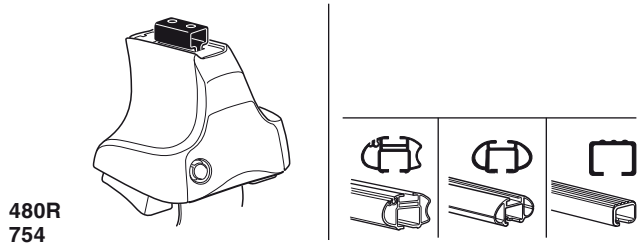


Kit 1174

TOYOTA Celica, 3-dr Coupé, 00-05



xx kg / xx lbs + 7 kg / 15,4 lbs = Max. 50 kg / Max. 110 lbs
 3 kg / 6,6 lbs

80 km/h 50 Mph 130 km/h 80 Mph
 40 km/h 25 Mph 0 km/h Mph

+ Kit XXXX

x1 x4 x4 x4 x4
 480R/754

x1 x4 x4 x4 x4
 480

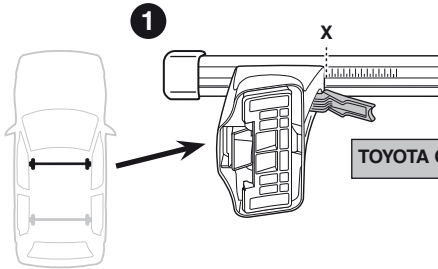
x1 x4 x4 x4 x4
 750

x2	x2	x2	x2	x2
x2	x2	x2	x2	x2
x2	x2	x2	x2	x2
x4	x4	x4	x4	x4

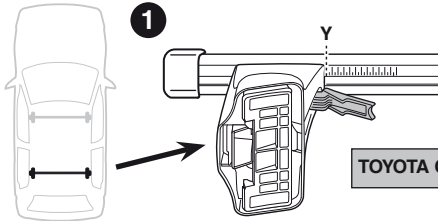
347 x 4 16 x 4 x 1

Kit

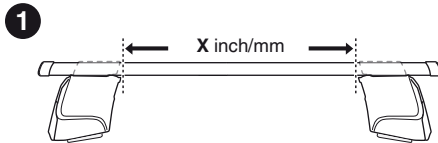
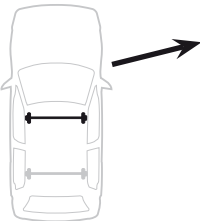




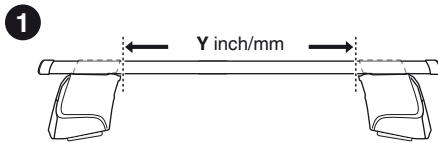
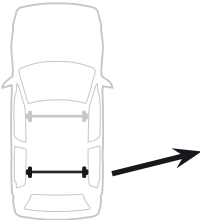
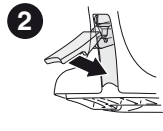
1	X
TOYOTA Celica, 3-dr Coupé, 00-05	33



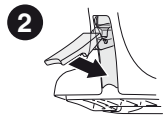
1	Y
TOYOTA Celica, 3-dr Coupé, 00-05	31



1	X inch	X mm
TOYOTA Celica, 3-dr Coupé, 00-05	38 5/8"	981 mm



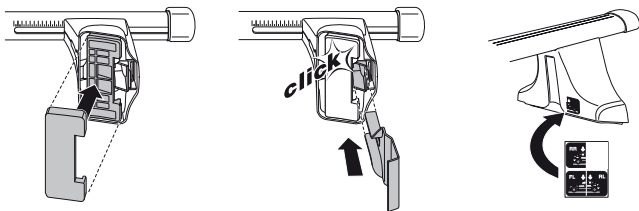
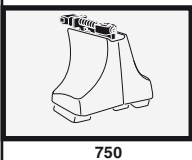
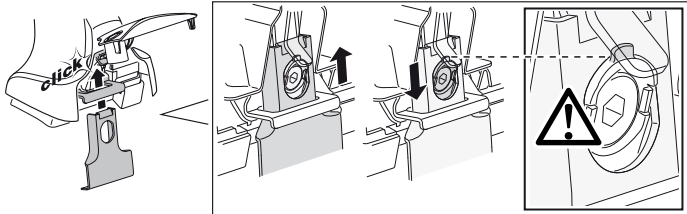
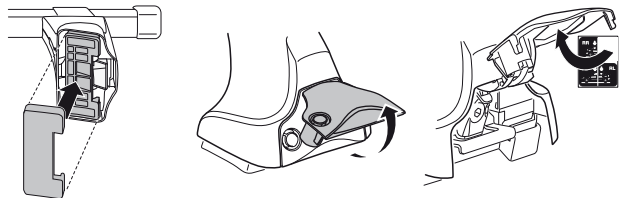
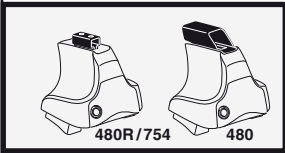
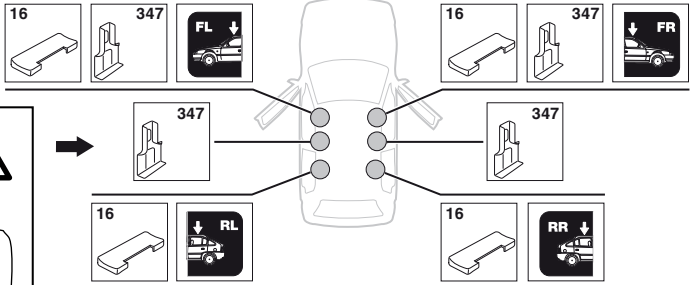
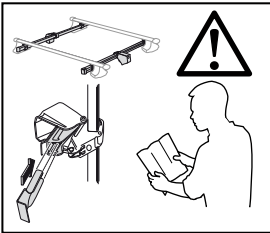
1	Y inch	Y mm
TOYOTA Celica, 3-dr Coupé, 00-05	37 7/8"	961 mm



4

TOYOTA Celica, 3-dr Coupé, 00-05

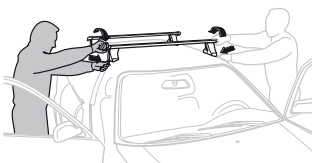
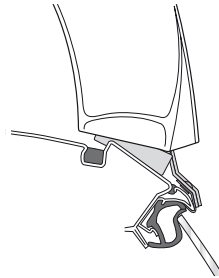
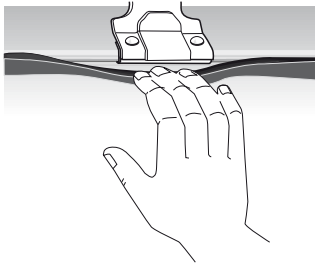
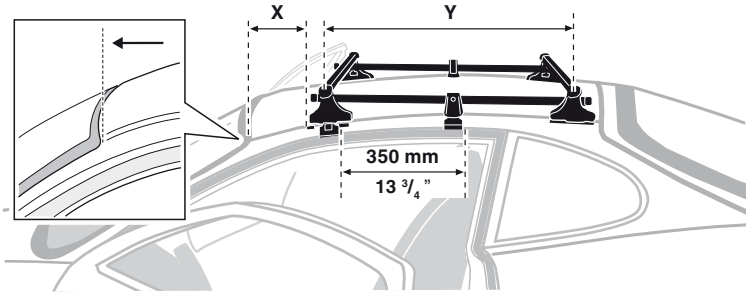
SRA



5



	X mm	Y mm	X inch	Y inch
TOYOTA Celica, 3-dr Coupé, 00-05	80 mm	695 mm	3 1/8"	27 3/8"



- GB/US** Tighten alternately
- D** Die Schrauben abwechselnd anziehen
- F** Serrer alternativement chaque côté
- NL** Afwisselend aan de linker- en de rechterkant aandraaien
- I** Alternare il serraggio delle viti
- E** Apretar alternativamente
- PT** Aperte alternadamente
- S** Dra åt växelvis
- FIN** Kierrä vuorotellen
- EST** Pinguldage vaheldumisi
- LAT** Pievelciēt pamišus
- LIT** Užsukinėkite pakaitomis
- PL** Śruby dokręcaj naprzemiennie
- RU** Затягивайте попеременно

- CZ** Pokrétla багаžnika dokręcaj dokręcaj naprzemiennie.
- SK** Dofahujte striedavo
- SLO** Privijajte izmenično.
- HR** Naizmjenično zategnite
- HU** Egymástól fűggetlenül szorítandó
- GR** Σφίγγετε εναλλάξ
- TR** Dönüşümlü sıkın

中文 交替拧紧

한국어 번갈아 가며 조이십시오.

日本語 交互に締め付けてください。

ไทย ชันในแบบสลับ

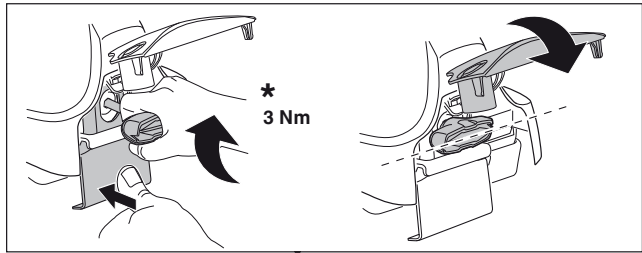
6



480R/754



480



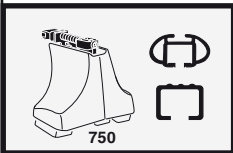
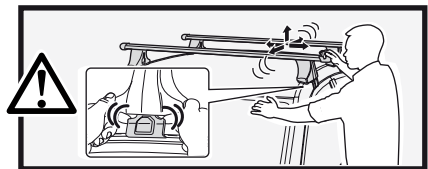
*
3 Nm



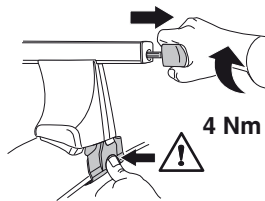
*



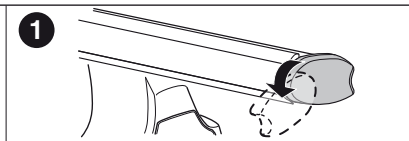
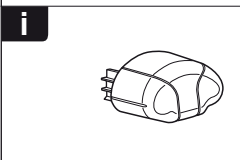
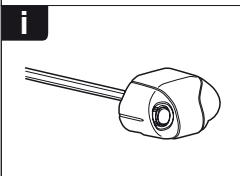
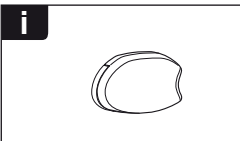
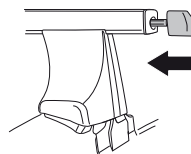
*
≈ 3 Nm



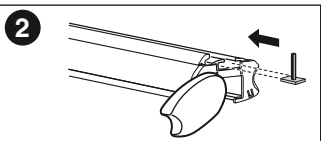
750



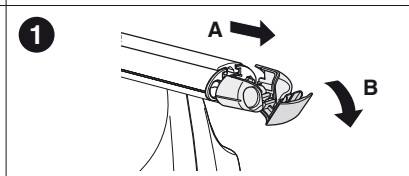
4 Nm



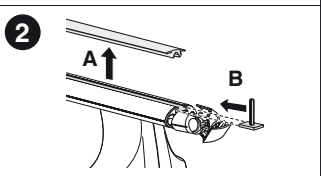
1



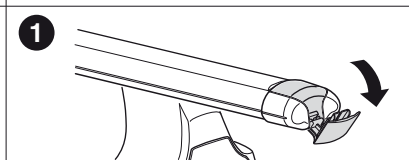
2



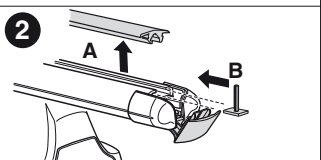
1



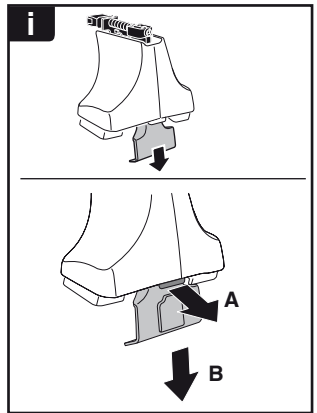
2



1



2



THULE
SWEDEN
**ONE
KEY
SYSTEM**



		544	(x4)
		596	(x6)
		588	(x8)
NA		510	(x10)
EUR		452	(x12)
ASIA			



WW ▶ Thule Sweden AB, Box 69, 330 33 Hillerstorp, SWEDEN
NA ▶ Thule Inc., 42 Silvermine Road, Seymour, Connecticut 06483, USA

info@thule.com
customer.service@thule.com

www.thule.com