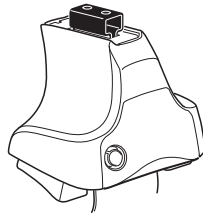
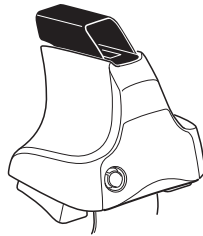
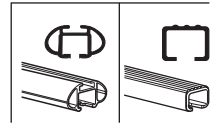


Kit 1690

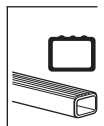
NISSAN Note, 5-dr MPV, 12-



754 Rapid System
480R Rapid Traverse (North America)



480 Traverse (North America)



754 Rapid System x4
 480R Rapid Traverse (North America) x4

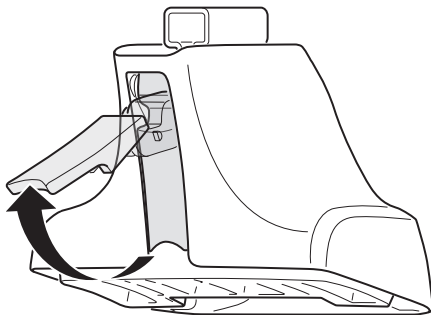
754 Rapid System
 480R Rapid Traverse (North America)

480 Traverse (North America)

(North America)

1229 x2
 1230 x2
 114 x2
 172 x2
 x1

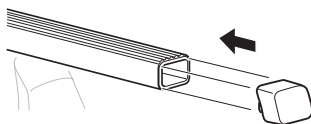
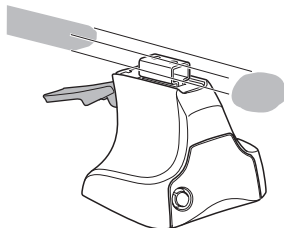
1



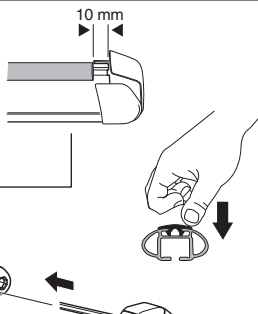
2



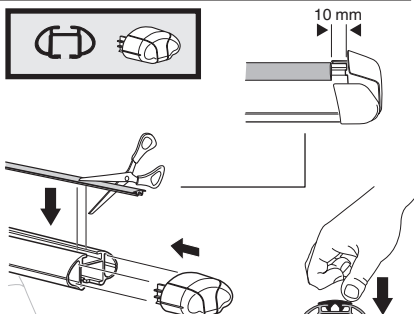
754 Rapid System
480R Rapid Traverse
(North America)



x4



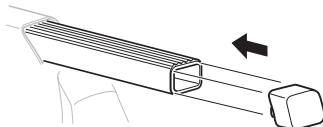
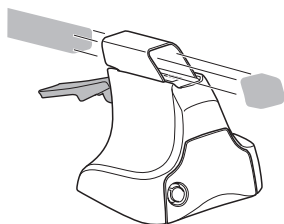
x4



x4

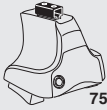


480 Traverse
(North America)

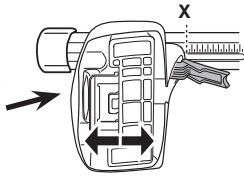


x4

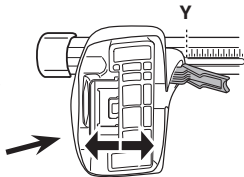
3



754 Rapid System



| | X |
|-----------------------------------|-------------|
| NISSAN Note, 5-dr MPV, 12- | 31,5 |



| | Y |
|-----------------------------------|-------------|
| NISSAN Note, 5-dr MPV, 12- | 28,5 |

3

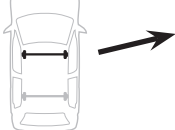


480R Rapid Traverse

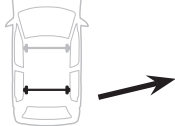


480 Traverse

(North America)

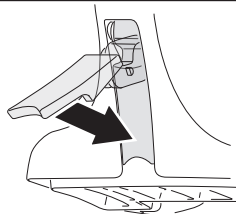


| | X inch | X mm |
|-----------------------------------|---------------|---------------|
| NISSAN Note, 5-dr MPV, 12- | 38" | 966 mm |



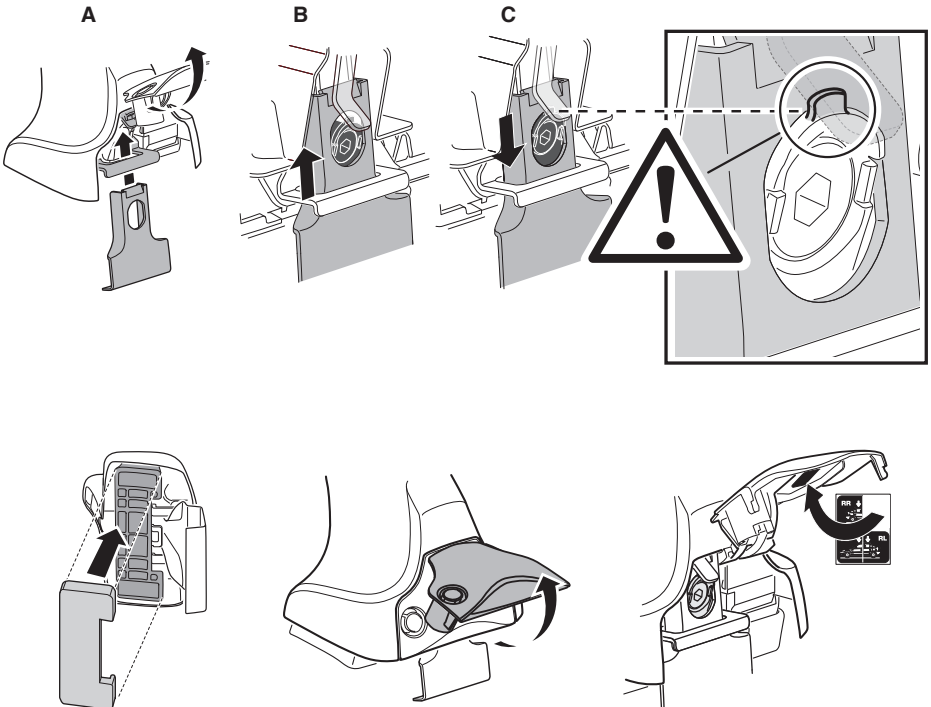
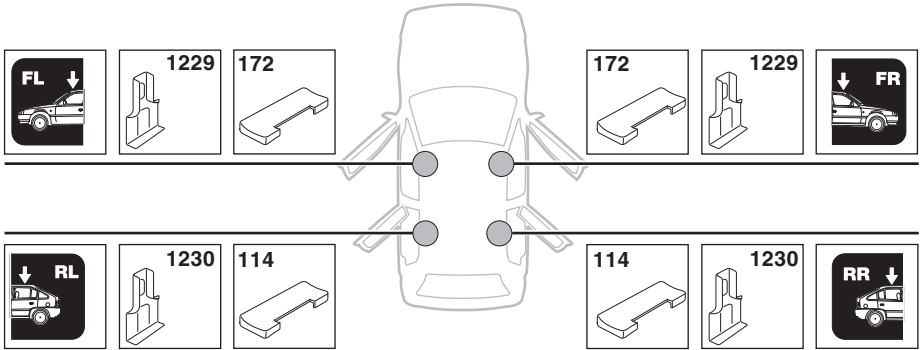
| | Y inch | Y mm |
|-----------------------------------|----------------|---------------|
| NISSAN Note, 5-dr MPV, 12- | 36 7/8" | 936 mm |

4

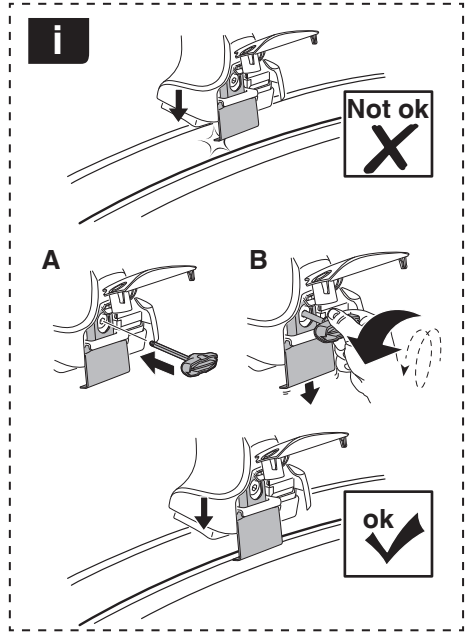
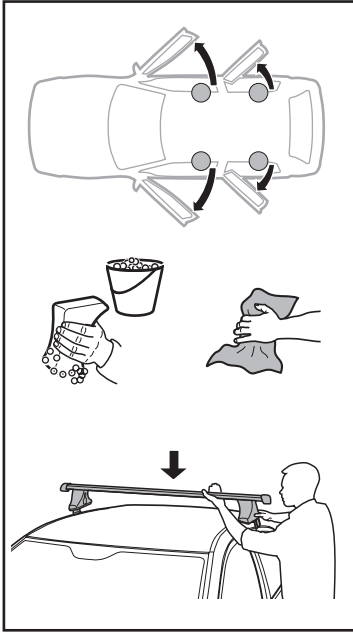


5

NISSAN Note, 5-dr MPV, 12-

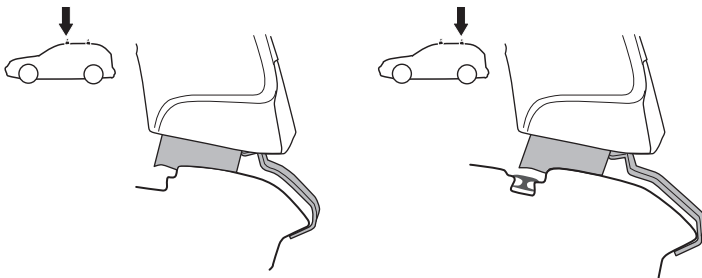
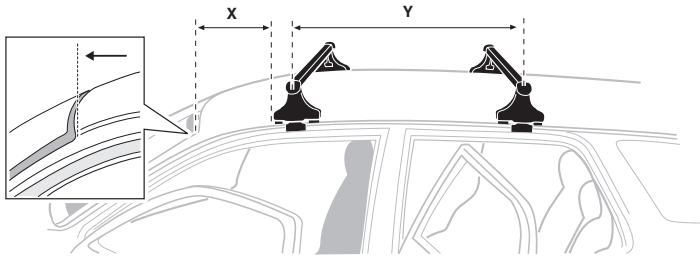


6

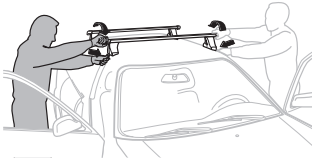


NISSAN Note, 5-dr MPV, 12-

| X mm | Y mm | X inch | Y inch |
|--------|--------|---------|---------|
| 350 mm | 700 mm | 13 3/4" | 27 1/2" |



7



| | |
|--------------|---|
| GB/US | Tighten alternately |
| D | Die Schrauben abwechselnd anziehen |
| F | Serrer alternativement chaque côté |
| NL | Afwisselend aan de linker- en de rechterkant aandraaien |
| I | Alternare il serraggio delle viti |
| E | Apretar alternativamente |
| PT | Aperte alternadamente |
| S | Dra åt växelvis |
| FIN | Kierrä vuorotellen |
| EST | Pinguldage vaheldumisi |
| LAT | Pielveiciet pamišus |
| LIT | Užsukinėkite pakaitomis |
| PL | Śruby dokręcaj naprzemiennie |
| RU | Загтягивайте попеременно |

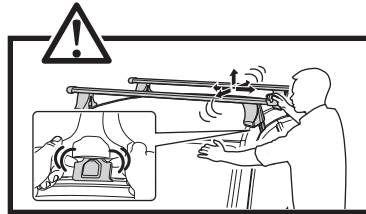
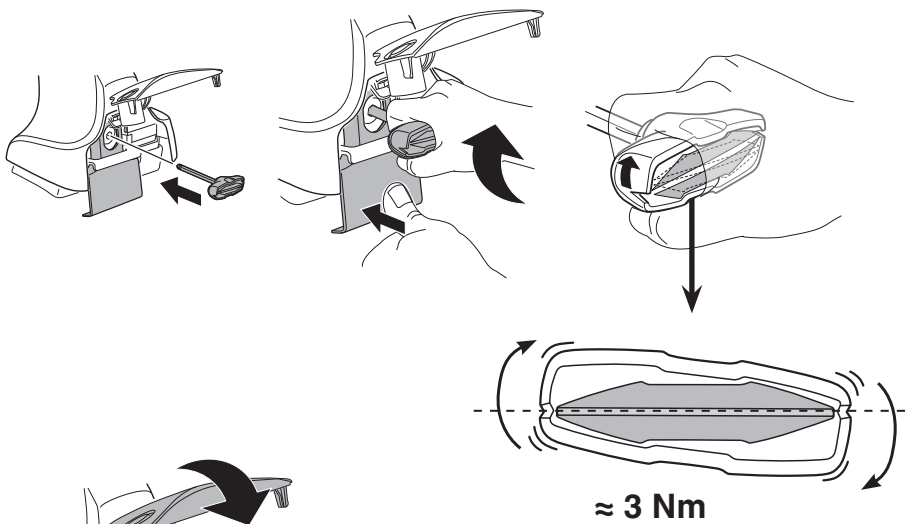
| | |
|------------|--|
| CZ | Pokręťta bagażnika dokręcaj naprzemiennie. |
| SK | Dofahajte striedavo |
| SLO | Privijajte izmenično. |
| HR | Naizmjenočno zategnite |
| HU | Egymástól függetlenül szorítandó |
| GR | Σφιγίγες εναλλάξ |
| TR | Dönüşümlü sıkın |

中文 交替拧紧

한국어 번갈아 가며 조이십시오.

日本語 交互に締め付けてください。

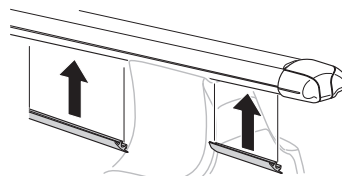
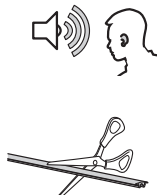
ไทย ชันในแบบสลับ

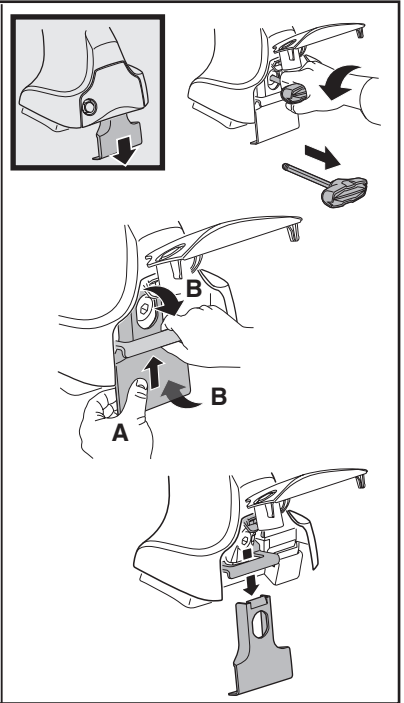
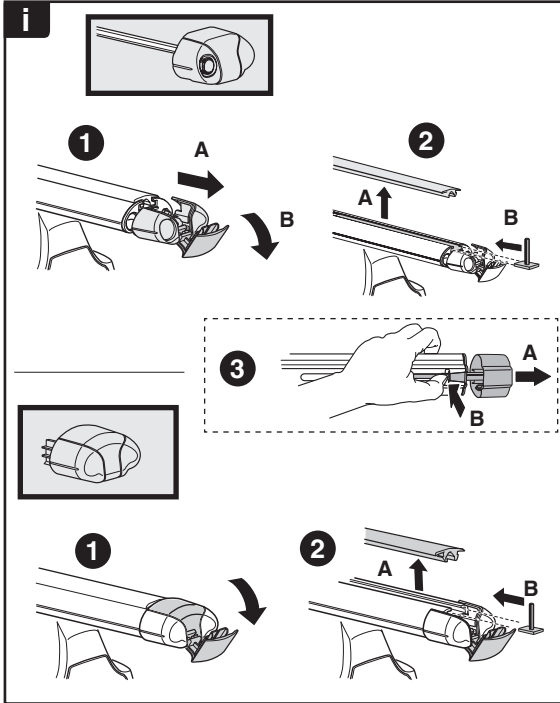
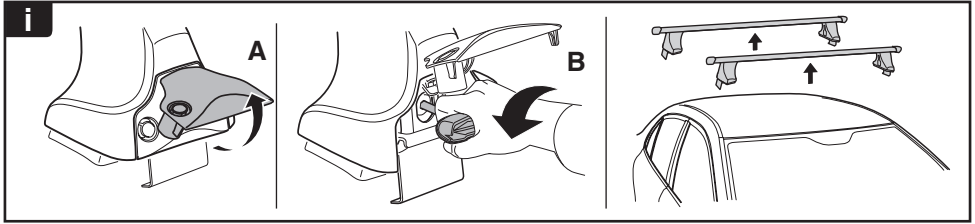


8

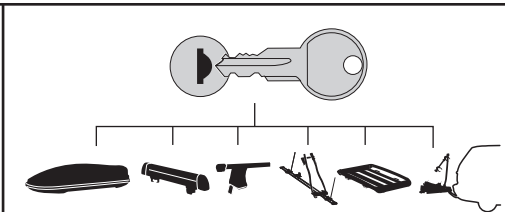


x1
17 mm

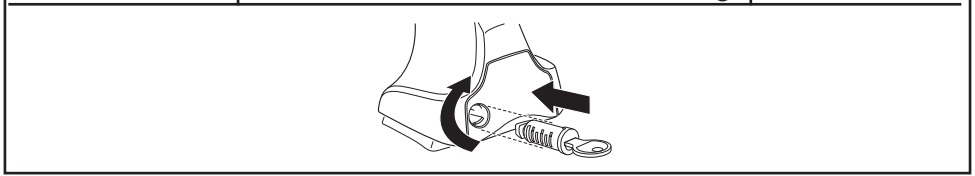




THULE
SWEDEN
**ONE
KEY
SYSTEM**



- 544** (x4)
 - 596** (x6)
 - 588** (x8)
 - 510** (x10)
 - 452** (x12)
- NA
EUR
ASIA



WW ▶ Thule Sweden AB, Box 69, 330 33 Hillerstorp, SWEDEN
NA ▶ Thule Inc., 42 Silvermine Road, Seymour, Connecticut 06483, USA

info@thule.com
 customer.service@thule.com

www.thule.com