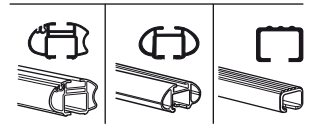
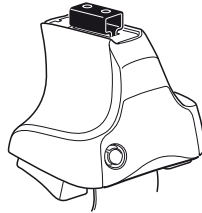


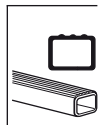
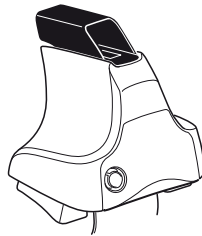
Kit 1168

- SUZUKI Alto**, 3-dr Hatchback (JPN), 94-98
- SUZUKI Alto**, 3-dr Hatchback (JPN), 99-04
- SUZUKI Alto**, 3-dr Hatchback (EUR), 94-01
- SUZUKI Alto**, 5-dr Hatchback (JPN), 94-98
- SUZUKI Alto**, 5-dr Hatchback (JPN), 99-04
- SUZUKI Alto**, 5-dr Hatchback (EUR), 94-01
- SUZUKI Alto**, 5-dr Hatchback (EUR), 02-06
- SUZUKI Alto Works**, 3-dr Hatchback (JPN), 99-04
- SUZUKI Alto Works**, 5-dr Hatchback (JPN), 99-04

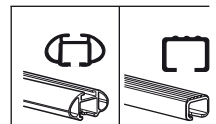
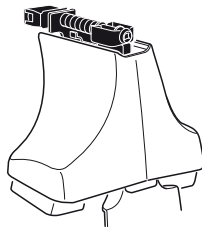
480R
754



480



750



xx kg / xx lbs + 7 kg / 15,4 lbs = **Max. 50kg**

 3 kg / 6,6 lbs = **Max. 110 lbs**

Warning!

 Speedometer: 0, 40 km/h / 25 Mph, 80 km/h / 50 Mph, 130 km/h / 80 Mph

THULE Kit XXXX

Instructions!

480R/754: x1 ruler, x4 base, x4 screws, x4 caps

480: x1 ruler, x4 base, x4 screws, x4 caps

750: x1 ruler, x4 base, x4 screws

 x2	 x2	 x2	 x2	 x2
 x2	 x2	 x2	 x2	 x2
 x2	 x2	 x2	 x2	 x2
 x4	 x4	 x4	 x4	 x4

316 x4

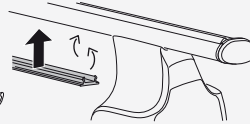
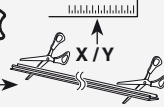
06 x4

FR **FR** **FL** **RL** x1

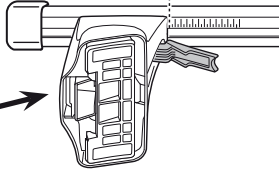
Kit



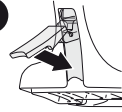
3



1

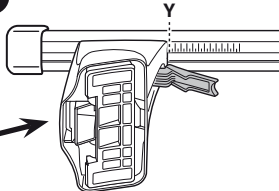


2

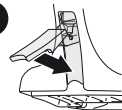


	X
SUZUKI Alto , 3-dr Hatchback (JPN), 94-98	34
SUZUKI Alto , 3-dr Hatchback (JPN), 99-04	17
SUZUKI Alto , 3-dr Hatchback (EUR), 94-01	34
SUZUKI Alto , 5-dr Hatchback (JPN), 94-98	34
SUZUKI Alto , 5-dr Hatchback (JPN), 99-04	17
SUZUKI Alto , 5-dr Hatchback (EUR), 94-01	34
SUZUKI Alto , 5-dr Hatchback (EUR), 02-06	17
SUZUKI Alto Works , 3-dr Hatchback (JPN), 99-04	17
SUZUKI Alto Works , 5-dr Hatchback (JPN), 99-04	17

1



2



	Y
SUZUKI Alto , 3-dr Hatchback (JPN), 94-98	24
SUZUKI Alto , 3-dr Hatchback (JPN), 99-04	14
SUZUKI Alto , 3-dr Hatchback (EUR), 94-01	24
SUZUKI Alto , 5-dr Hatchback (JPN), 94-98	24
SUZUKI Alto , 5-dr Hatchback (JPN), 99-04	14
SUZUKI Alto , 5-dr Hatchback (EUR), 94-01	24
SUZUKI Alto , 5-dr Hatchback (EUR), 02-06	14
SUZUKI Alto Works , 3-dr Hatchback (JPN), 99-04	14
SUZUKI Alto Works , 5-dr Hatchback (JPN), 99-04	14

3

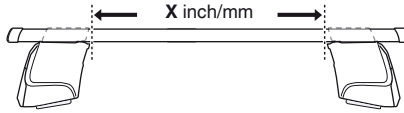


480R

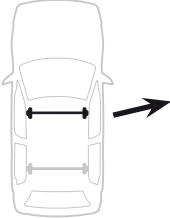


480

1

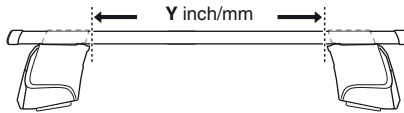


2

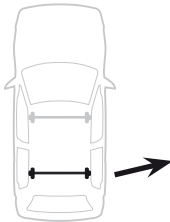


	X inch	X mm
SUZUKI Alto, 3-dr Hatchback (JPN), 94-98	39"	991 mm
SUZUKI Alto, 3-dr Hatchback (JPN), 99-04	32 ³ / ₈ "	821 mm
SUZUKI Alto, 3-dr Hatchback (EUR), 94-01	39"	991 mm
SUZUKI Alto, 5-dr Hatchback (JPN), 94-98	39"	991 mm
SUZUKI Alto, 5-dr Hatchback (JPN), 99-04	32 ³ / ₈ "	821 mm
SUZUKI Alto, 5-dr Hatchback (EUR), 94-01	39"	991 mm
SUZUKI Alto, 5-dr Hatchback (EUR), 02-06	32 ³ / ₈ "	821 mm
SUZUKI Alto Works, 3-dr Hatchback (JPN), 99-04	32 ³ / ₈ "	821 mm
SUZUKI Alto Works, 5-dr Hatchback (JPN), 99-04	32 ³ / ₈ "	821 mm

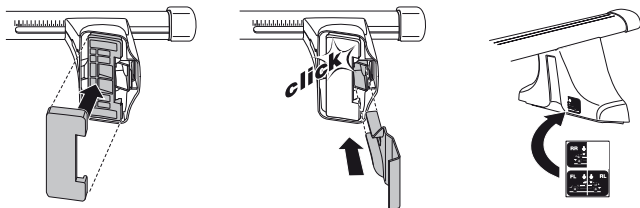
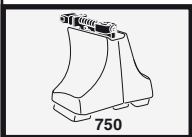
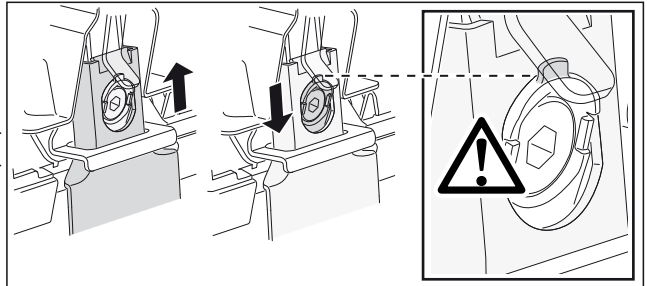
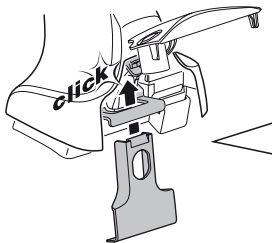
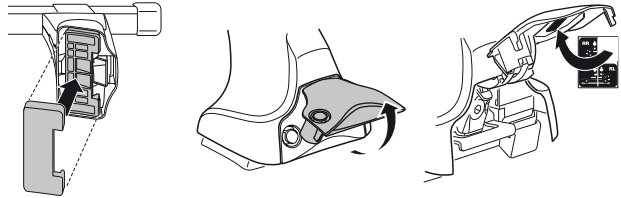
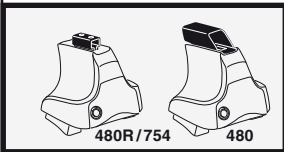
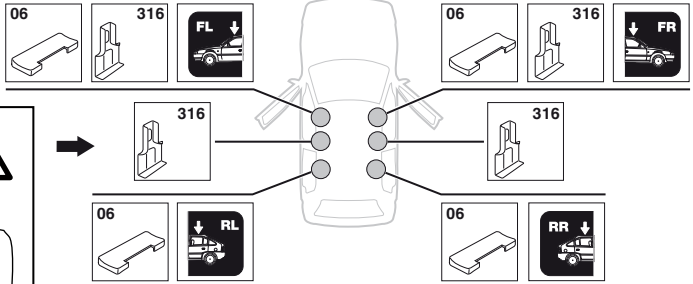
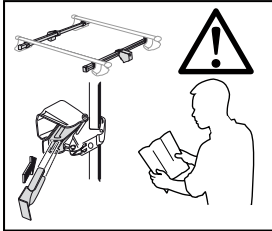
1

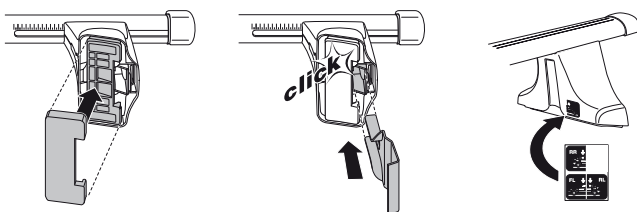
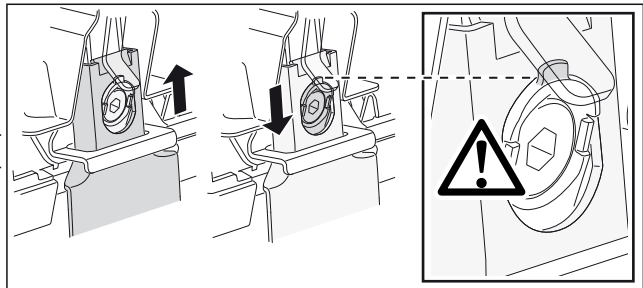
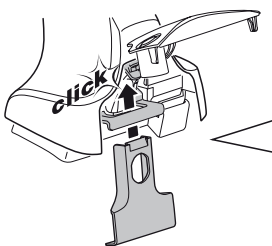
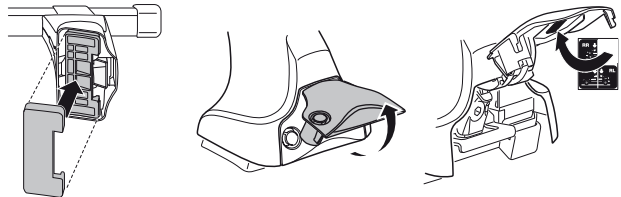
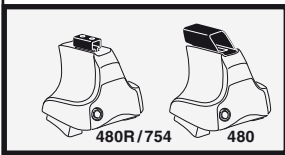
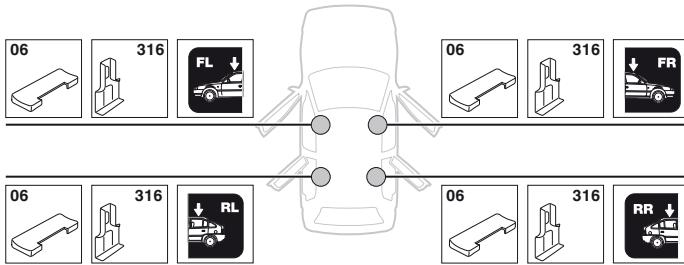


2

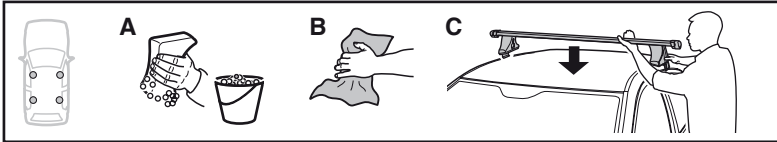


	Y inch	Y mm
SUZUKI Alto, 3-dr Hatchback (JPN), 94-98	35 ¹ / ₈ "	891 mm
SUZUKI Alto, 3-dr Hatchback (JPN), 99-04	31 ¹ / ₈ "	791 mm
SUZUKI Alto, 3-dr Hatchback (EUR), 94-01	35 ¹ / ₈ "	891 mm
SUZUKI Alto, 5-dr Hatchback (JPN), 94-98	35 ¹ / ₈ "	891 mm
SUZUKI Alto, 5-dr Hatchback (JPN), 99-04	31 ¹ / ₈ "	791 mm
SUZUKI Alto, 5-dr Hatchback (EUR), 94-01	35 ¹ / ₈ "	891 mm
SUZUKI Alto, 5-dr Hatchback (EUR), 02-06	31 ¹ / ₈ "	791 mm
SUZUKI Alto Works, 3-dr Hatchback (JPN), 99-04	31 ¹ / ₈ "	791 mm
SUZUKI Alto Works, 5-dr Hatchback (JPN), 99-04	31 ¹ / ₈ "	791 mm

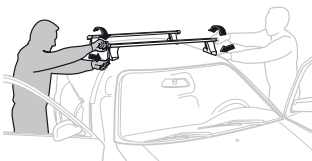
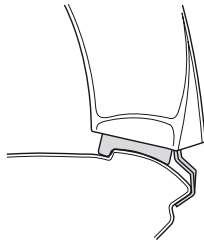
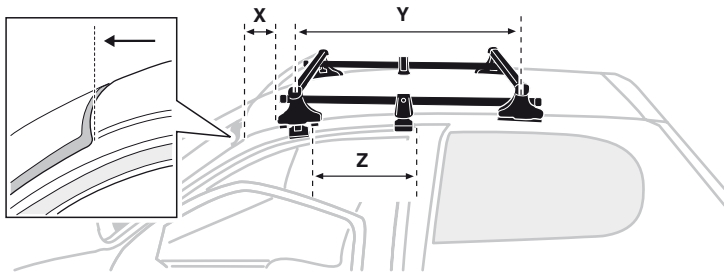
4**SUZUKI Alto, 3-dr Hatchback (JPN), 94-98****SUZUKI Alto, 3-dr Hatchback (JPN), 99-04****SUZUKI Alto, 3-dr Hatchback (EUR), 94-01****SUZUKI Alto Works, 3-dr Hatchback (JPN), 99-04****SRA**

4**SUZUKI Alto, 5-dr Hatchback (JPN), 94-98****SUZUKI Alto, 5-dr Hatchback (JPN), 99-04****SUZUKI Alto, 5-dr Hatchback (EUR), 94-01****SUZUKI Alto, 5-dr Hatchback (EUR), 02-06****SUZUKI Alto Works, 5-dr Hatchback (JPN), 99-04**

5



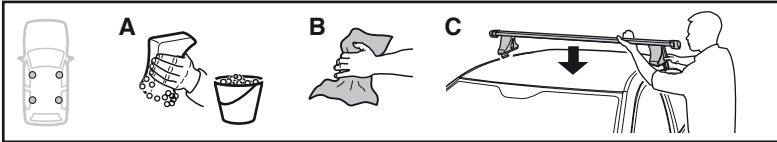
	X mm	Y mm	Z mm	X inch	Y inch	X inch
SUZUKI Alto, 3-dr Hatchback (JPN), 94-98	230 mm	700 mm	280 mm	9"	27 1/2"	11"
SUZUKI Alto, 3-dr Hatchback (JPN), 99-04	230 mm	700 mm	280 mm	9"	27 1/2"	11"
SUZUKI Alto, 3-dr Hatchback (EUR), 94-01	230 mm	700 mm	280 mm	9"	27 1/2"	11"
SUZUKI Alto Works, 3-dr Hatchback (JPN), 99-04	230 mm	700 mm	280 mm	9"	27 1/2"	11"



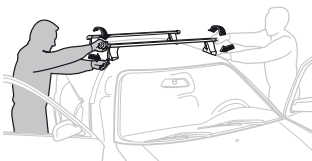
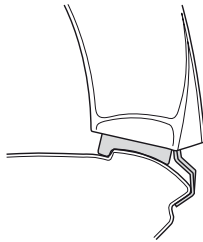
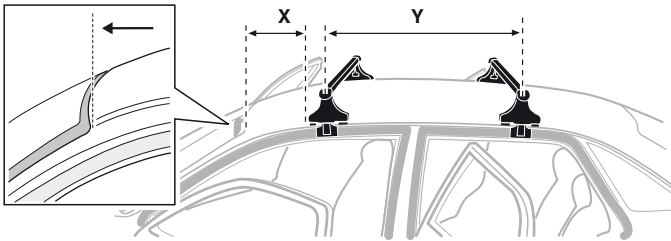
- GB/US** Tighten alternately
D Die Schrauben abwechselnd anziehen
F Serrer alternativement chaque côté
NL Afwisselend aan de linker- en de rechterkant aandraaien
I Alternare il serraggio delle viti
E Apretar alternativamente
PT Aperte alternadamente
S Dra åt växelvis
FIN Kierrä vuorotellen
EST Pinguldage vaheldumisi
LAT Pievelciēt pamīšus
LIT Užsukinėkite pakaitomis
PL Śruby dokręcaj naprzemiennie
RU Затягивайте попеременно

- CZ** Pokręťta bagażnika dokręcaj dokręcaj naprzemiennie.
SK Dotahujte striedavo
SLO Privijajte izmenično.
HR Naizmjenično zategnite
HU Egymástól függetlenül szorítandó
GR Σφιγγετε εναλλάξ
TR Dönüşümlü sıkın
中文 交替拧紧
한국어 번갈아 가며 조이십시오.
日本語 交互に締め付けてください。
ไทย ชับในแบบสลับ

5



	X mm	Y mm	X inch	Y inch
SUZUKI Alto, 5-dr Hatchback (JPN), 94-98	230 mm	700 mm	9"	27 1/2"
SUZUKI Alto, 5-dr Hatchback (JPN), 99-04	230 mm	700 mm	9"	27 1/2"
SUZUKI Alto, 5-dr Hatchback (EUR), 94-01	230 mm	700 mm	9"	27 1/2"
SUZUKI Alto, 5-dr Hatchback (EUR), 02-06	230 mm	700 mm	9"	27 1/2"
SUZUKI Alto Works, 5-dr Hatchback (JPN), 99-04	230 mm	700 mm	9"	27 1/2"



GB/US	Tighten alternately	CZ	Pokreťta bagazníka dokrečaj dokrečaj naprzemiennie.
D	Die Schrauben abwechselnd anziehen	SK	Dofahujte striedavo
F	Serrer alternativement chaque côté	SLO	Privijajte izmenično.
NL	Afwisselend aan de linker- en de rechterkant aandraaien	HR	Naizmjenično zategnite
I	Alternare il serraggio delle viti	HU	Egymástól függetlenül szorítandó
E	Apretar alternativamente	GR	Σφιγίγετε εναλλάξ
PT	Aperter alternadamente	TR	Dönüşümlü sıkın
S	Dra åt växelvis	中文	交替拧紧
FIN	Kierrä vuorotellen	한국어	번갈아 가며 조이십시오.
EST	Pinguldage vaheldumisi	日本語	交互に締め付けてください。
LAT	Pievēlciet pamišus	ไทย	ขันในแบบสลับ
LIT	Užsukinėkite pakaitomis		
PL	Śruby dokrećaj naprzemiennie		
RU	Затягивайте попеременно		

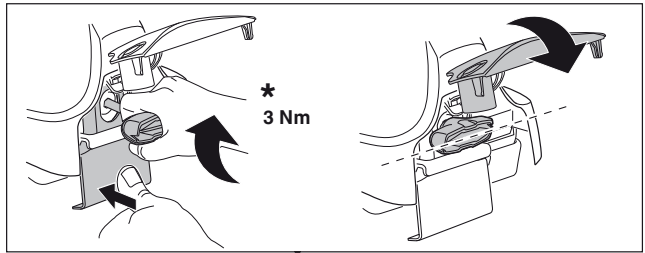
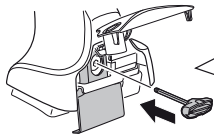
6



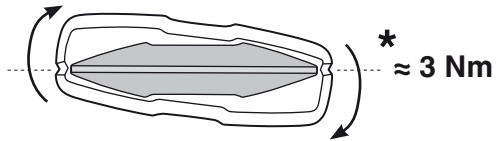
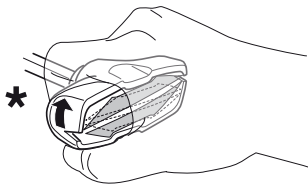
480R/754



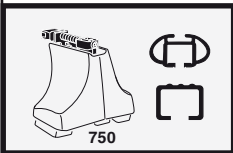
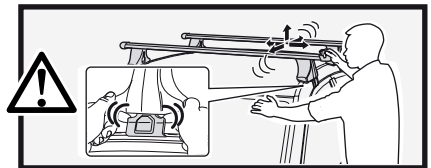
480



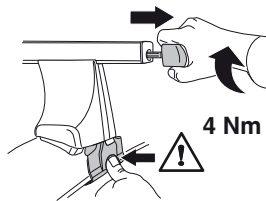
*
3 Nm



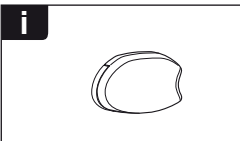
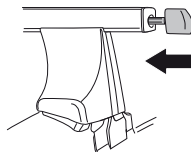
*
≈ 3 Nm



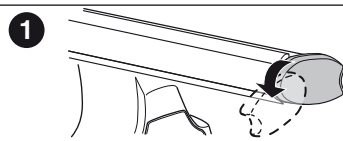
750



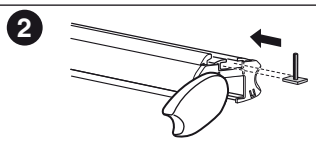
4 Nm



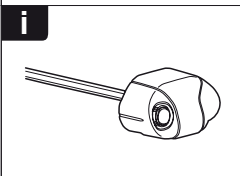
i



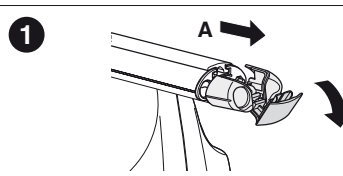
1



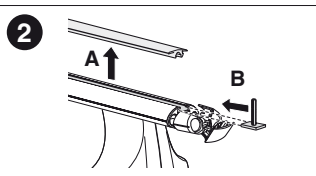
2



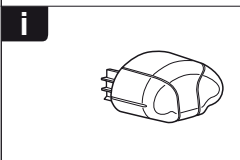
i



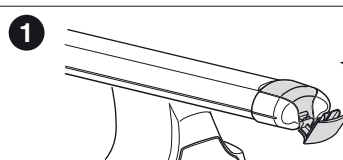
1



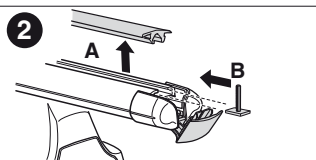
2



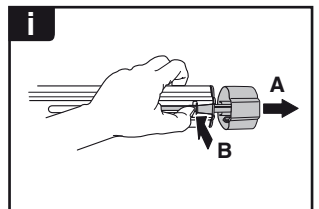
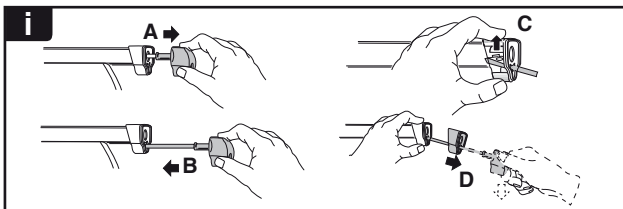
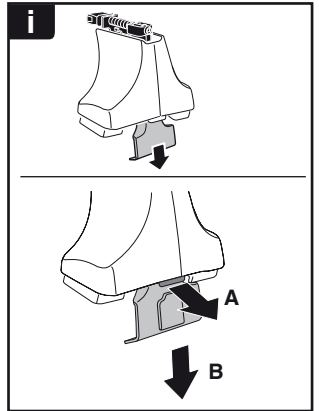
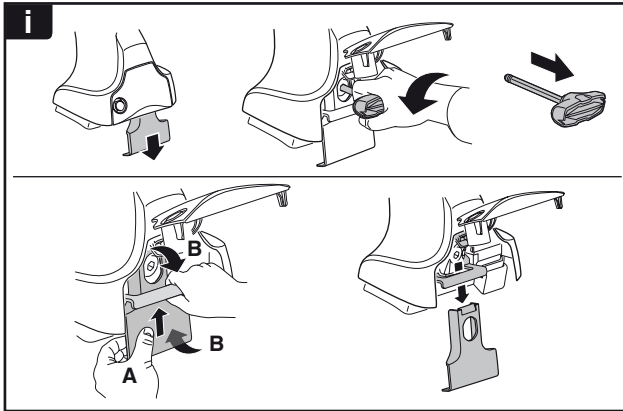
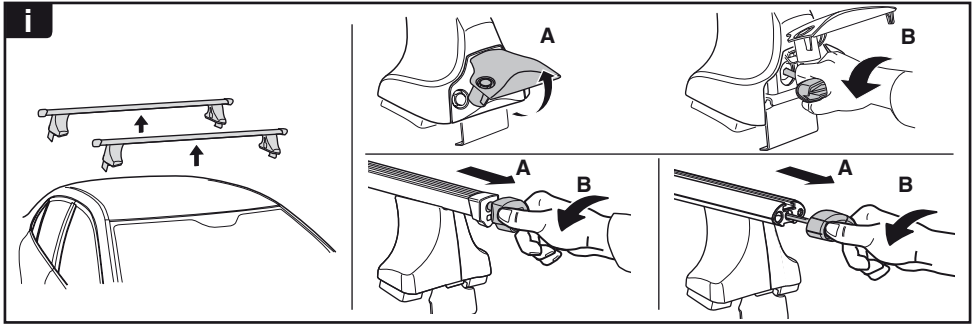
i



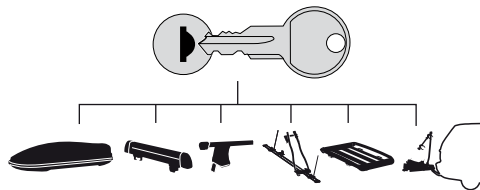
1



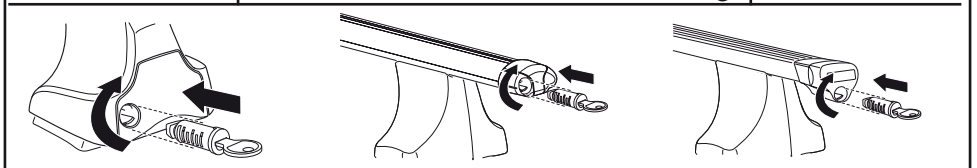
2



THULE
SWEDEN
**ONE
KEY
SYSTEM**



- 544** (x4)
 - 596** (x6)
 - 588** (x8)
 - 510** (x10)
 - 510** (x10)
 - 452** (x12)
- NA
EUR
ASIA



WW ▶ Thule Sweden AB, Box 69, 330 33 Hillerstorp, SWEDEN
NA ▶ Thule Inc., 42 Silvermine Road, Seymour, Connecticut 06483, USA

info@thule.com
customer.service@thule.com

www.thule.com