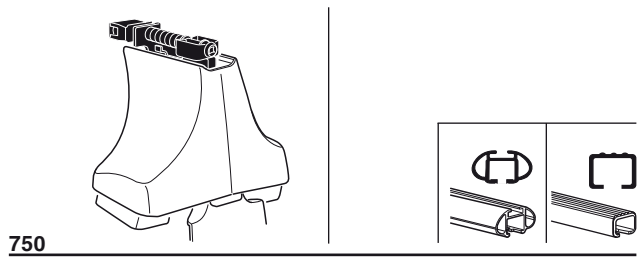
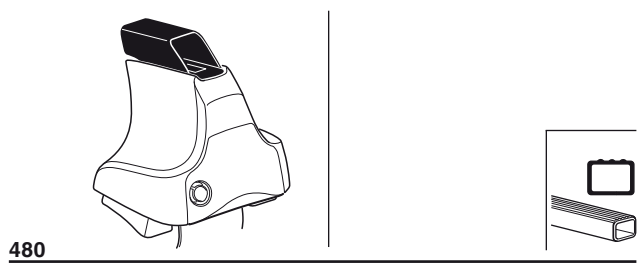
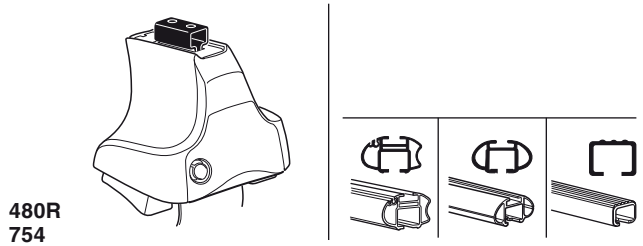


Kit 1349

SSANGYONG Korando, 3-dr SUV, 97-



Max. 50 kg
Max. 110 lbs

x1

x4

x4

x4
 x4

480R/754

x1

x4

x4

x4

480

x1

x4

x4

750

x2 x2 x2 x4	x2	x2 x2 x4 x4	x2 x2	x2

← **654** x 4

← **04** x 2

← **27** x 2

x 1

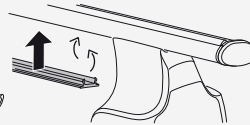
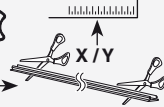
Kit



3



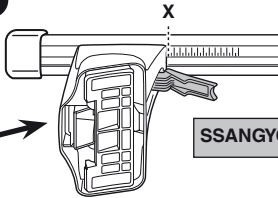
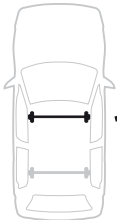
754



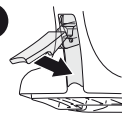
750



1



2

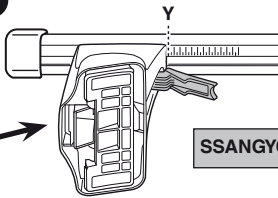


SSANGYONG Korando, 3-dr SUV, 97-

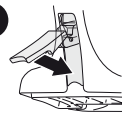
X

52

1



2



SSANGYONG Korando, 3-dr SUV, 97-

Y

49,5

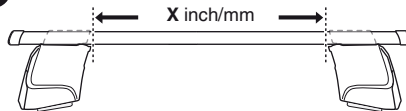


480R

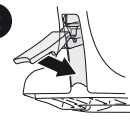


480

1



2



SSANGYONG Korando, 3-dr SUV, 97-

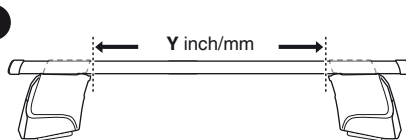
X inch

X mm

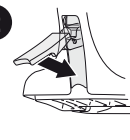
46 1/8"

1171 mm

1



2



SSANGYONG Korando, 3-dr SUV, 97-

Y inch

Y mm

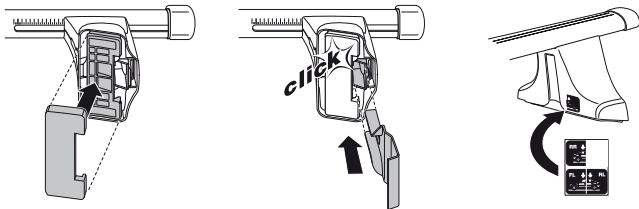
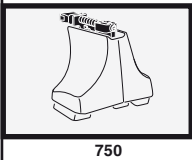
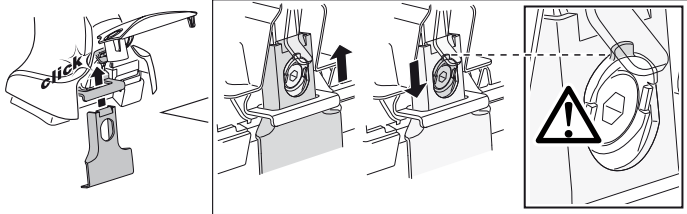
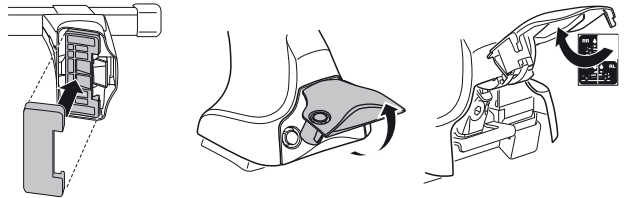
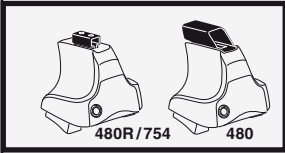
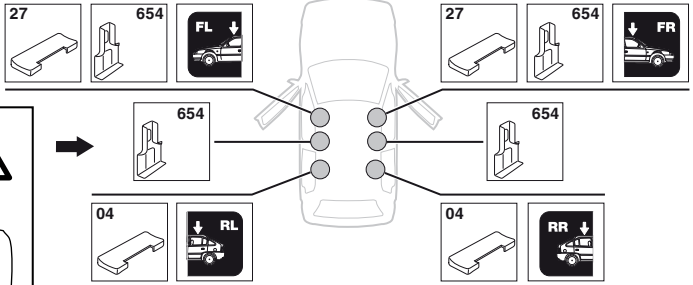
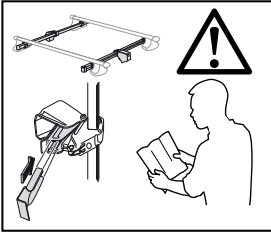
45 1/8"

1146 mm

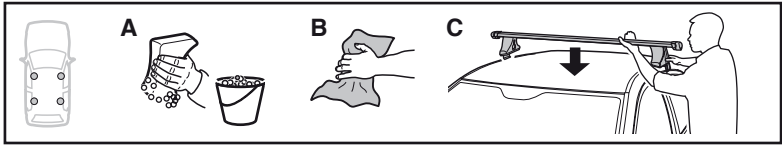
4

SSANGYONG Korando, 3-dr SUV, 97-

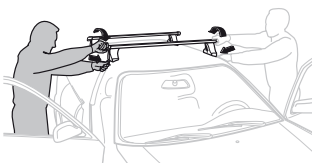
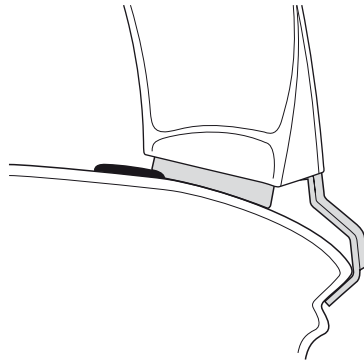
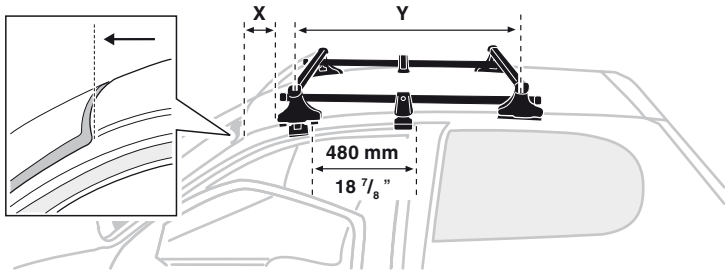
SRA



5



	X mm	Y mm	X inch	Y inch
SSANGYONG Korando, 3-dr SUV, 97-	250 mm	700 mm	9 7/8"	27 1/2"



- GB/US** Tighten alternately
- D** Die Schrauben abwechselnd anziehen
- F** Serrer alternativement chaque côté
- NL** Afwisselend aan de linker- en de rechterkant aandraaien
- I** Alternare il serraggio delle viti
- E** Apretar alternativamente
- PT** Aperte alternadamente
- S** Dra åt växelvís
- FIN** Kierrä vuorotellen
- EST** Pinguldage vaheldumisi
- LAT** Pievelciēt pamišus
- LIT** Užsukinėkite pakaitomis
- PL** Śruby dokręcaj naprzemiennie
- RU** Затягивайте попеременно

- CZ** Pokrétla багажника dokręcaj dokręcaj naprzemiennie.
- SK** Dofahujte striedavo
- SLO** Privijajte izmenično.
- HR** Naizmjenično zategnite
- HU** Egymástól függetlenül szorítandó
- GR** Σφίγγετε εναλλάξ
- TR** Dönüşümlü sıkın
- 中文** 交替拧紧
- 한국어** 번갈아 가며 조이십시오.
- 日本語** 交互に締め付けてください。
- ไทย** ชันในแบบสลับ

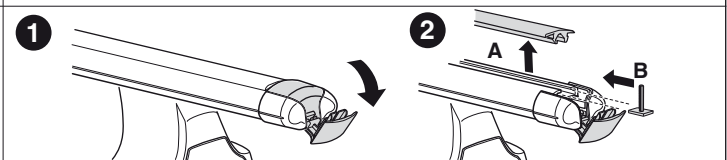
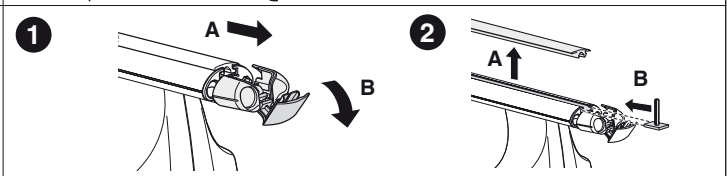
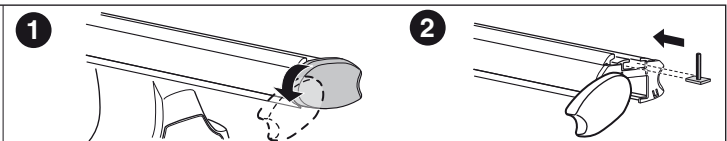
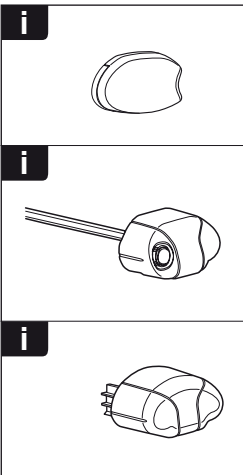
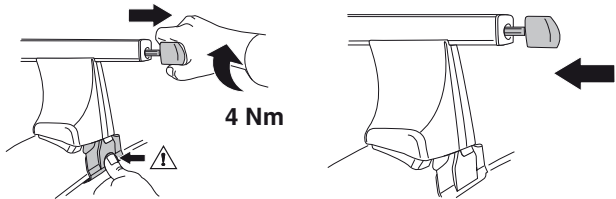
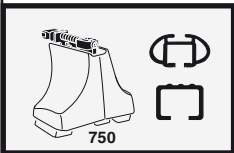
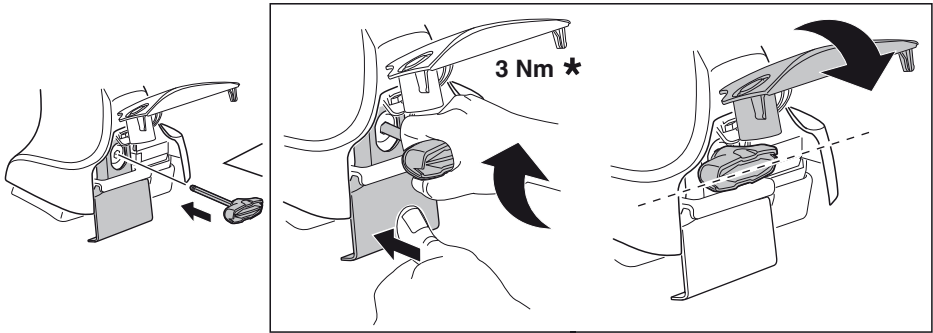
6



480R/754









480





THULE
SWEDEN
**ONE
KEY
SYSTEM**



-  544 (x4)
-  596 (x6)
-  588 (x8)
- NA  510 (x10)
- EUR  452 (x12)
- ASIA  452 (x12)



WW ▶ Thule Sweden AB, Box 69, 330 33 Hillerstorp, SWEDEN
NA ▶ Thule Inc., 42 Silvermine Road, Seymour, Connecticut 06483, USA

info@thule.com
customer.service@thule.com

 www.thule.com