

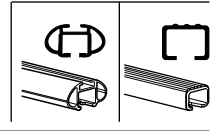
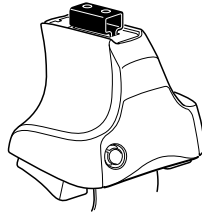
Kit 1175

FIAT Punto, 3-dr Hatchback, 94-98

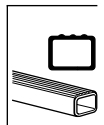
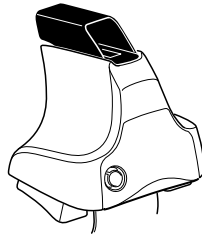
FIAT Punto, 5-dr Hatchback, 94-98

LANCIA Kappa, 4-dr Sedan, 95-00

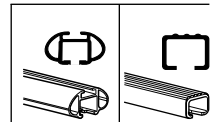
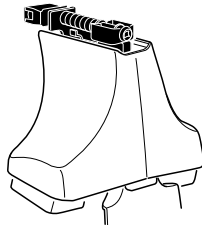
480R
754



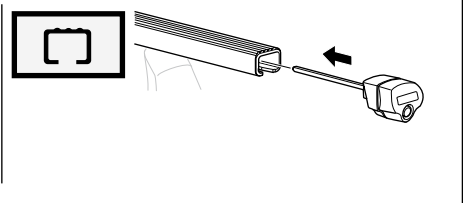
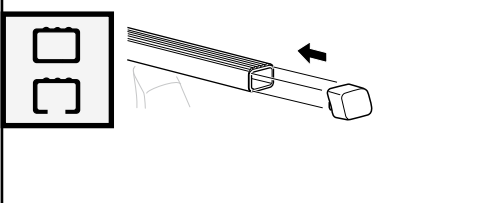
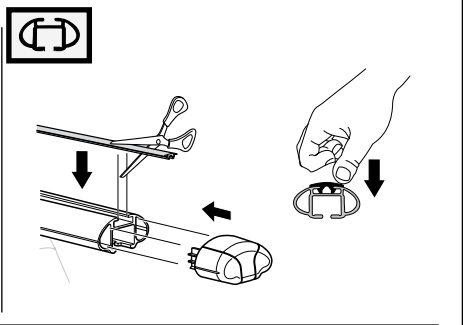
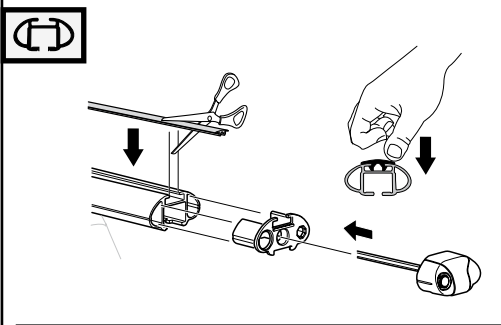
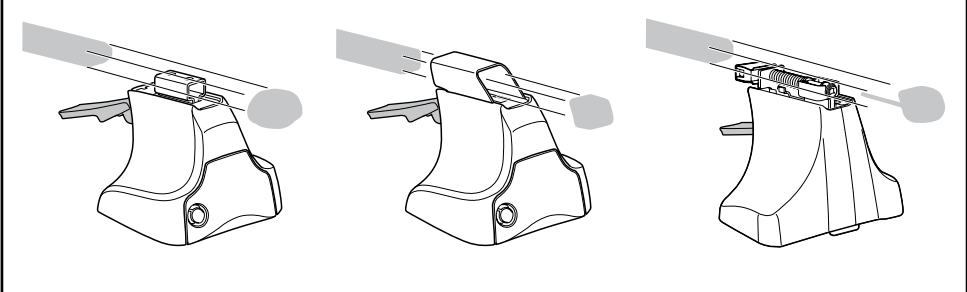
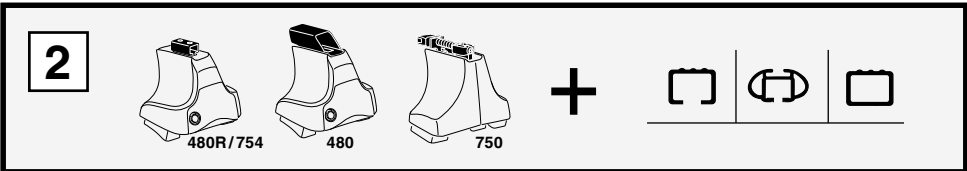
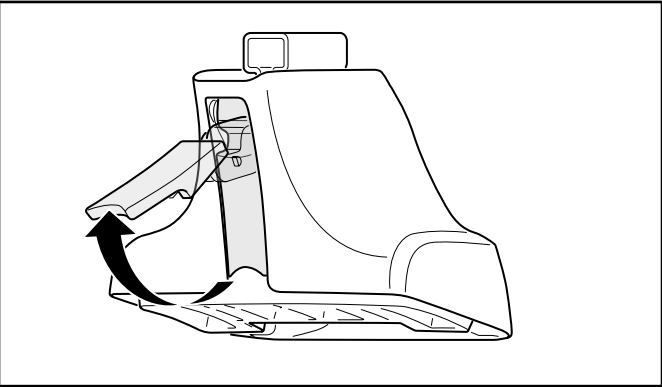
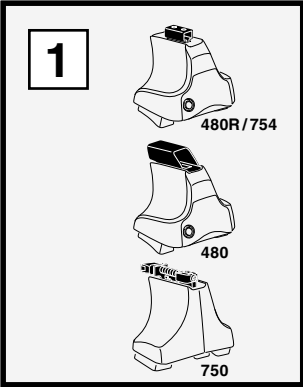
480



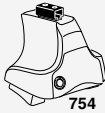
750



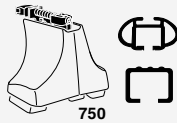
Kit



3

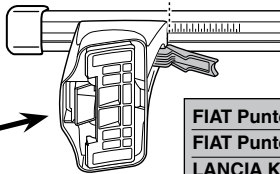
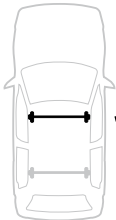


754

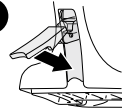


750

1

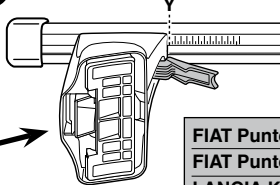


2

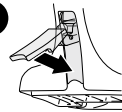


	X
FIAT Punto, 3-dr Hatchback, 94-98	24
FIAT Punto, 5-dr Hatchback, 94-98	24
LANCIA Kappa, 4-dr Sedan, 95-00	29,5

1



2



	Y
FIAT Punto, 3-dr Hatchback, 94-98	21
FIAT Punto, 5-dr Hatchback, 94-98	22,5
LANCIA Kappa, 4-dr Sedan, 95-00	29,5

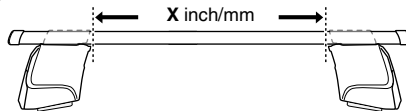
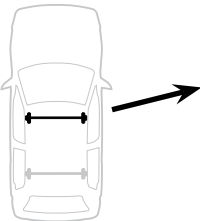


480R

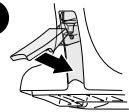


480

1

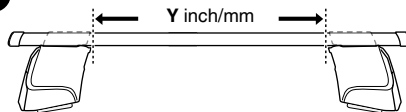
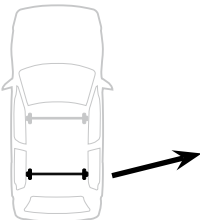


2

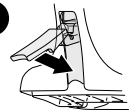


	X inch	X mm
FIAT Punto, 3-dr Hatchback, 94-98	35 1/8"	891 mm
FIAT Punto, 5-dr Hatchback, 94-98	35 1/8"	891 mm
LANCIA Kappa, 4-dr Sedan, 95-00	37 1/4"	946 mm

1



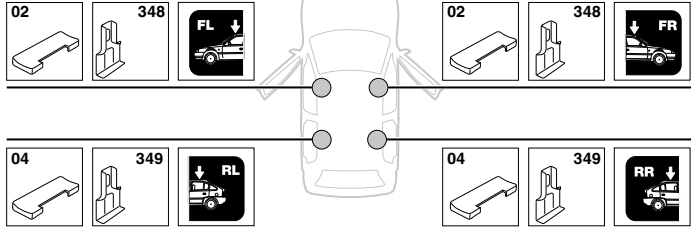
2



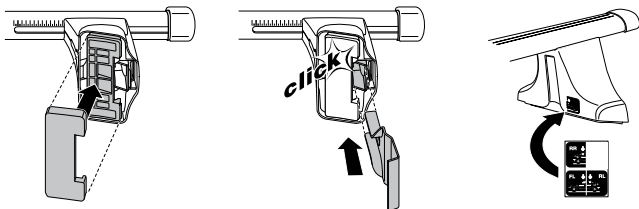
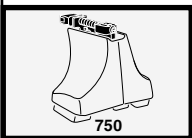
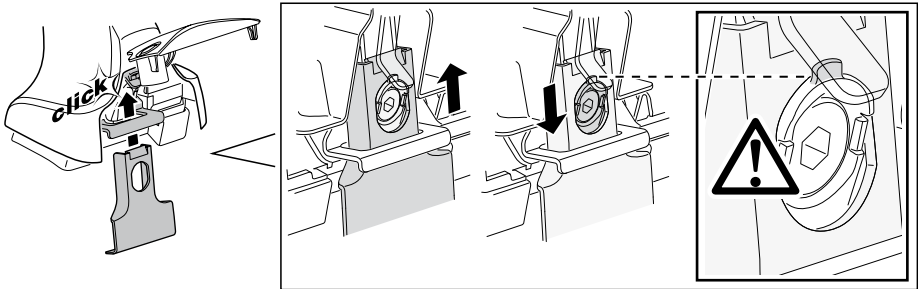
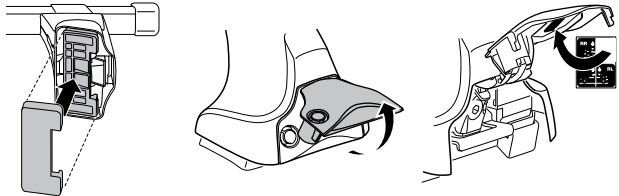
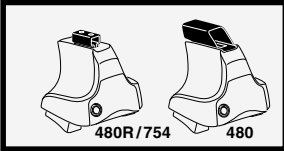
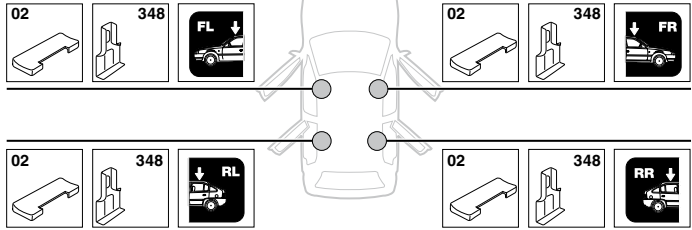
	Y inch	Y mm
FIAT Punto, 3-dr Hatchback, 94-98	33 7/8"	861 mm
FIAT Punto, 5-dr Hatchback, 94-98	34 1/2"	876 mm
LANCIA Kappa, 4-dr Sedan, 95-00	37 1/4"	946 mm

4

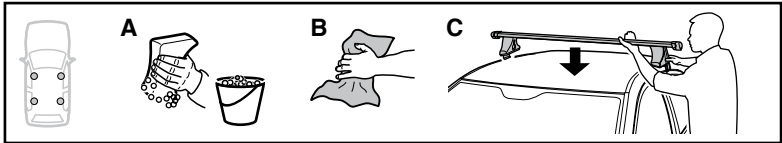
FIAT Punto, 3-dr Hatchback, 94-98



FIAT Punto, 5-dr Hatchback, 94-98
LANCIA Kappa, 4-dr Sedan, 95-00

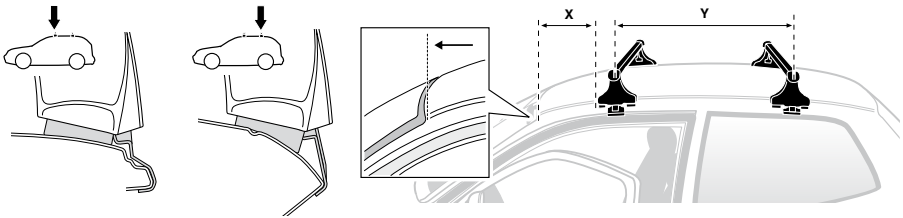


5

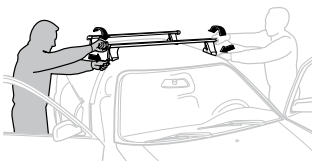
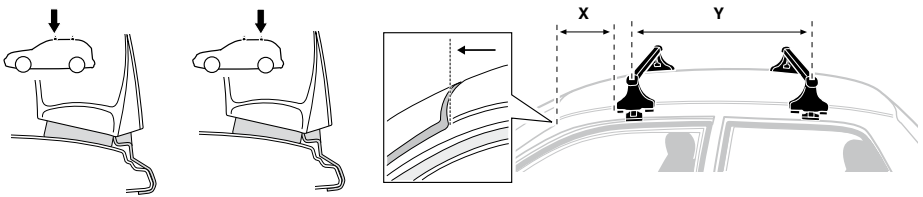


	X mm	Y mm	X inch	Y inch
FIAT Punto, 3-dr Hatchback, 94-98	330 mm	700 mm	13"	27 1/2"
FIAT Punto, 5-dr Hatchback, 94-98	260 mm	700 mm	10 1/4"	27 1/2"
LANCIA Kappa, 4-dr Sedan, 95-00	200 mm	650 mm	7 7/8"	25 5/8"

FIAT Punto, 3-dr Hatchback, 94-98



FIAT Punto, 5-dr Hatchback, 94-98
LANCIA Kappa, 4-dr Sedan, 95-00



GB/US Tighten alternately
D Die Schrauben abwechselnd anziehen
F Serrer alternativement chaque côté
NL Afwisselend aan de linker- en de rechterkant aandraaien
I Alternare il serraggio delle viti
E Apretar alternativamente
PT Aperte alternadamente
S Dra åt växelvis
FIN Kierrä vuorotellen
EST Pinguldage vaheldumisi
LAT Pievelciēt pamišus
LIT Užsukinėkite pakaitomis
PL Śruby dokręcaj naprzemiennie
RU Затягивайте попеременно

CZ Pokręťta багажníka dokręcaj dokręcaj naprzemiennie.
SK Doťahujte striedavo
SLO Privijajte izmenično.
HR Naizmjenočno zategnite
HU Egymástól függetlenül szorítandó
GR Σφιγγετε εναλλάξ
TR Dönüşümlü sıkın

中文 交替拧紧

한국어 번갈아 가며 조이십시오.

日本語 交互に締め付けてください。

ไทย ชั้้นในแบบสลับ

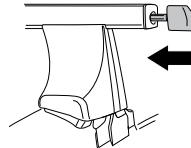
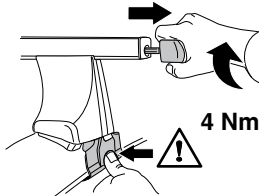
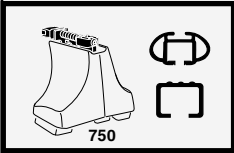
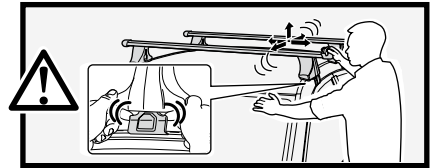
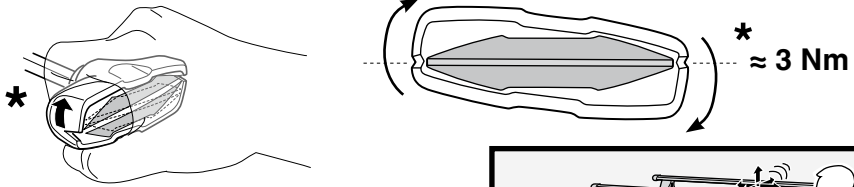
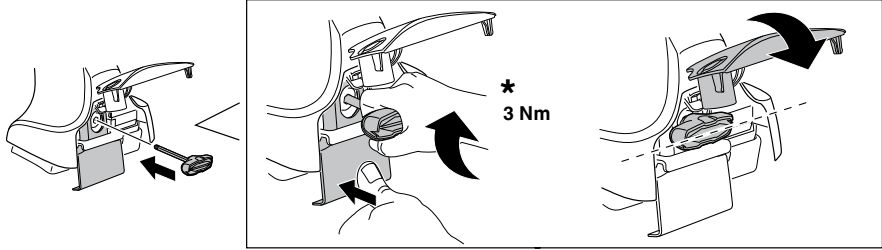
6



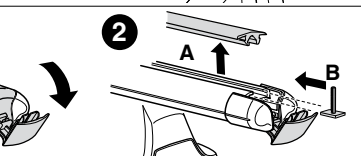
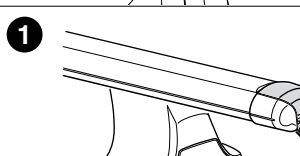
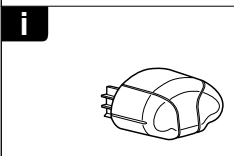
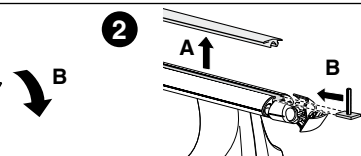
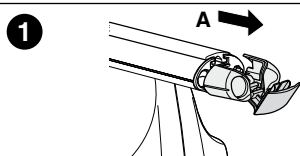
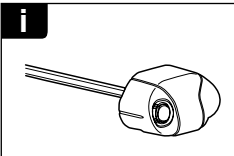
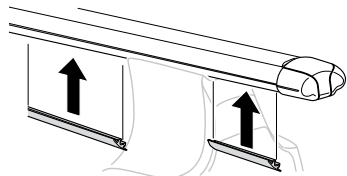
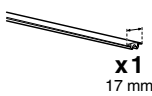
480R/754

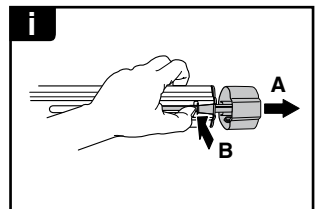
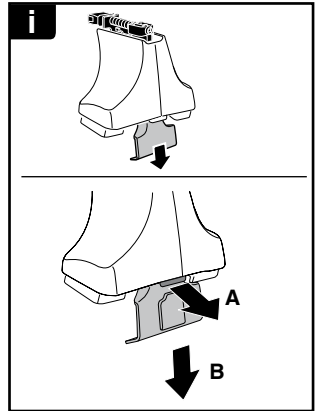


480



7





THULE
SWEDEN
**ONE
KEY
SYSTEM**



- 544 (x4)
- 596 (x6)
- 588 (x8)
- NA 510 (x10)
- EUR 452 (x12)
- ASIA



WW ▶ Thule Sweden AB, Box 69, 330 33 Hillerstorp, SWEDEN
NA ▶ Thule Inc., 42 Silvermine Road, Seymour, Connecticut 06483, USA

info@thule.com
customer.service@thule.com

www.thule.com