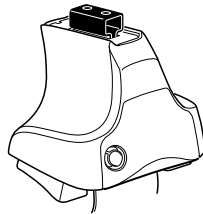
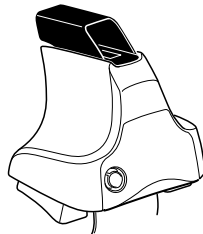
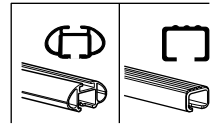


Kit 1635

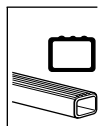
FORD Grand C-Max, 5-dr MPV, 10- (Without railing)



754 Rapid System
480R Rapid Traverse (North America)



480 Traverse (North America)



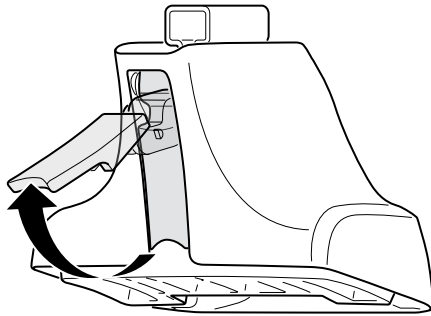
754 Rapid System

480R Rapid Traverse (North America)

480 Traverse (North America)

(North America)

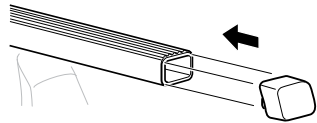
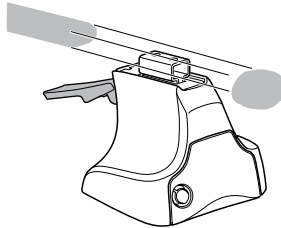
1



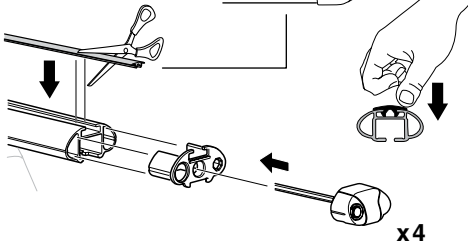
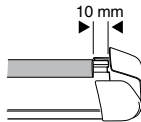
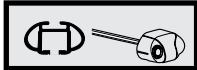
2



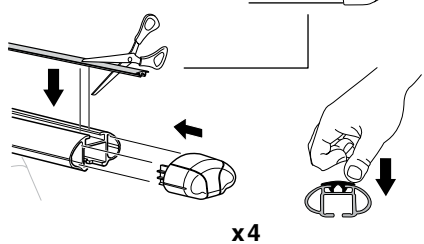
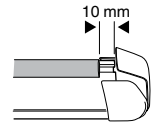
754 Rapid System
480R Rapid Traverse
(North America)



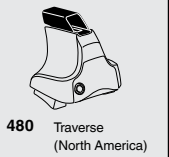
x4



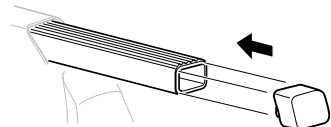
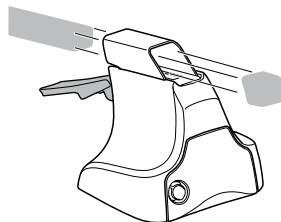
x4



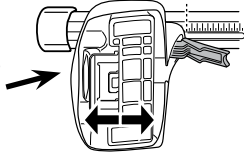
x4



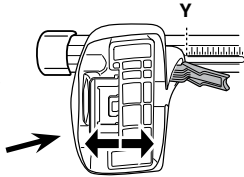
480 Traverse
(North America)



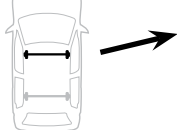
x4

3**754** Rapid System

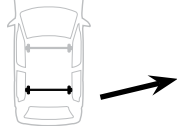
	X
FORD Grand C-Max, 5-dr MPV, 10- (without railing)	38,5



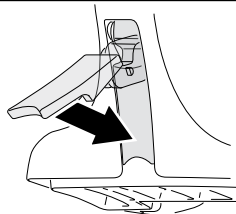
	Y
FORD Grand C-Max, 5-dr MPV, 10- (without railing)	34,5

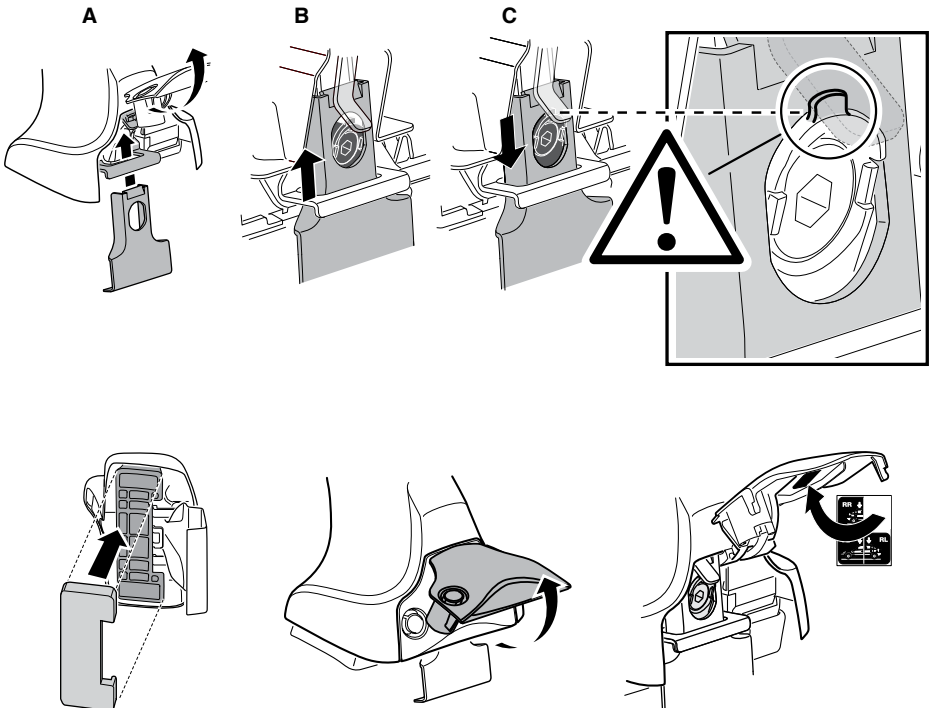
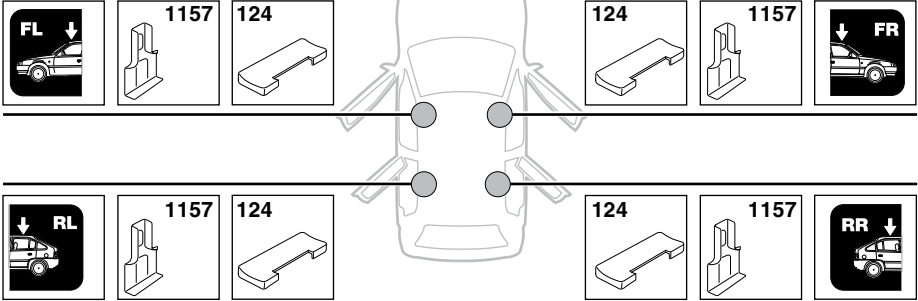
3**480R** Rapid Traverse**480** Traverse**(North America)**

	X inch	X mm
FORD Grand C-Max, 5-dr MPV, 10- (without railing)	40 ³/₄"	1036 mm

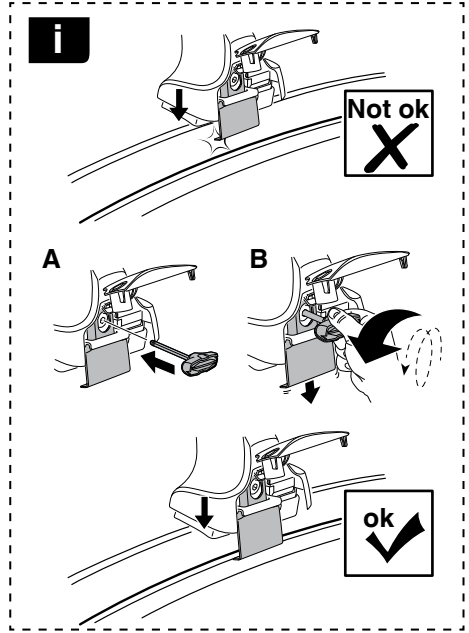


	Y inch	Y mm
FORD Grand C-Max, 5-dr MPV, 10- (without railing)	39 ¹/₄"	996 mm

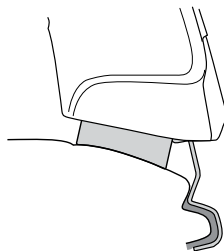
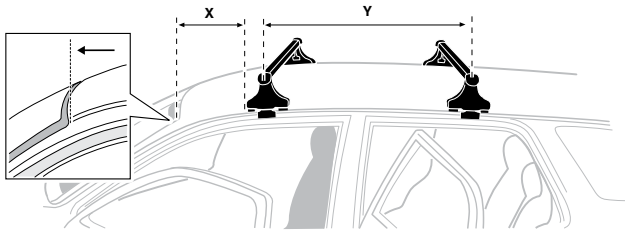
4

5**FORD Grand C-Max, 5-dr MPV, 10- (without railing)**

6



	X mm	Y mm	X inch	Y inch
FORD Grand C-Max, 5-dr MPV, 10- (without railing)	680 mm	700 mm	26 ³ / ₄ "	27 ¹ / ₂ "



7

GB/US Tighten alternately
D Die Schrauben abwechselnd anziehen
F Serrer alternativement chaque côté
NL Afwisselend aan de linker- en de rechterkant aandraaien
I Alternare il serraggio delle viti
E Apertar alternativamente
PT Aperte alternadamente
S Dra åt växelvis
FIN Kierrä vuorotellen
EST Pinguldage vaheldumisi
LAT Pieļieciet pamišus
LIT Užsukinėkite pakaitomis
PL Śruby dokręcaj naprzemiennie
RU Затягивайте попеременно

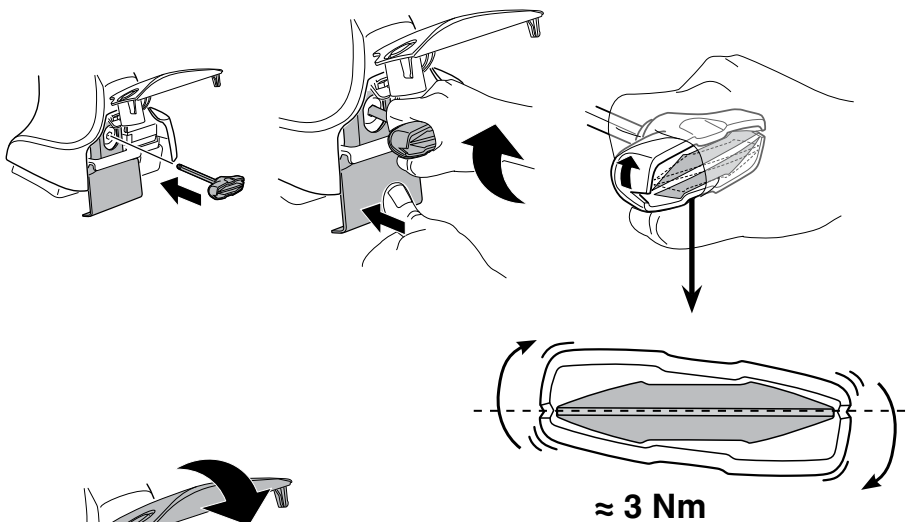
CZ Pokręťta bagażnika dokręcaj naprzemiennie.
SK Dofahajte striedavo
SLO Privijajte izmenično.
HR Naizmjenočno zategnite
HU Egymástól függetlenül szorítandó
GR Σφιγίγτες εναλλάξ
TR Dönüşümlü sıkın

中文 交替拧紧

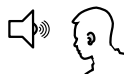
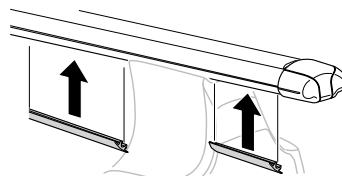
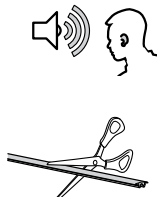
한국어 번갈아 가며 조이십시오.

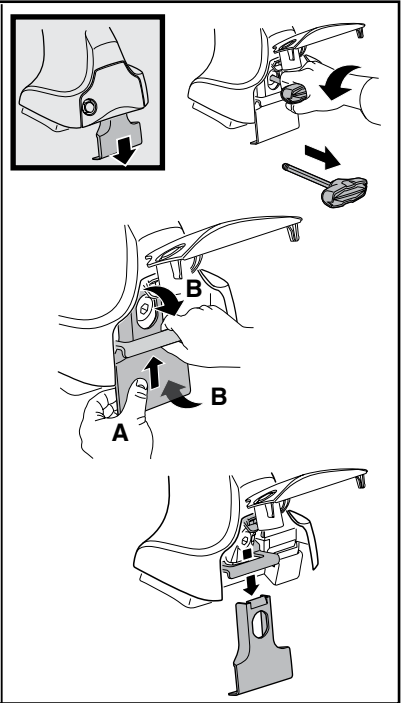
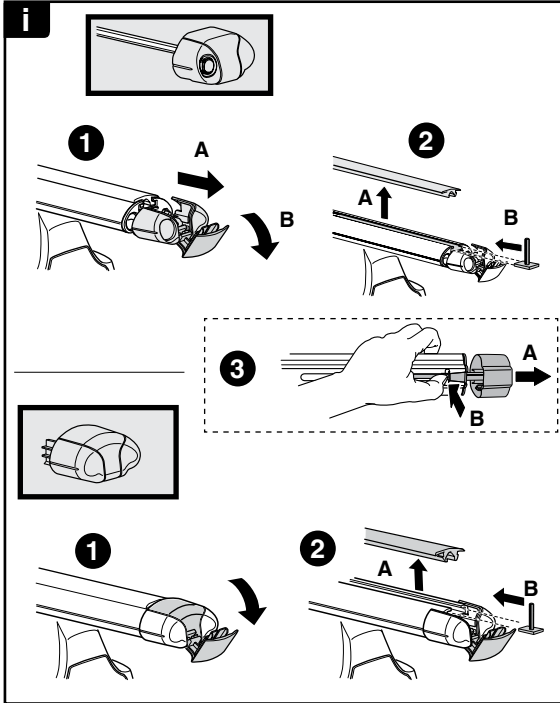
日本語 交互に締め付けてください。

ไทย ชันในแบบสลับ

**8**

x1
17 mm





THULE
SWEDEN
**ONE
KEY
SYSTEM**



- 544 (x4)
 - 596 (x6)
 - 588 (x8)
 - 510 (x10)
 - 452 (x12)
- NA
EUR
ASIA



WW ▶ Thule Sweden AB, Box 69, 330 33 Hillerstorp, SWEDEN
NA ▶ Thule Inc., 42 Silvermine Road, Seymour, Connecticut 06483, USA

info@thule.com
customer.service@thule.com

www.thule.com