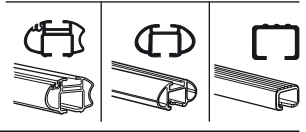
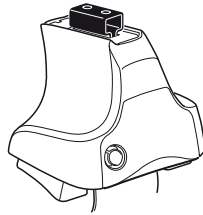


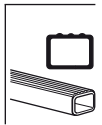
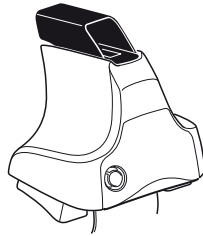
Kit 1101

JEEP Grand Cherokee, 5-dr SUV, 92-95, 96-98

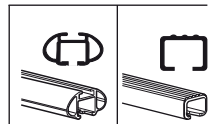
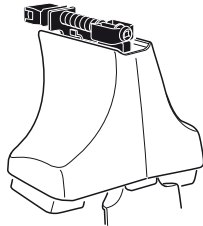
480R
754



480



750



xx kg
xx lbs

+ 7 kg
15,4 lbs =

**Max.
75kg**
**Max.
165 lbs**

!

80 km/h
50 Mph 130 km/h
80 Mph

40 km/h
25 Mph

km/h
Mph

THULE

Kit XXXX

instructions

THULE

!

480R/754

x1 x4 x4 x4

480

x1 x4 x4 x4

750

x1 x4 x4 x4

x2 x2 x2 x4

x2

x2 x2 x4 x4

x2 x2 x2 x2

48 x 4

16 x 4

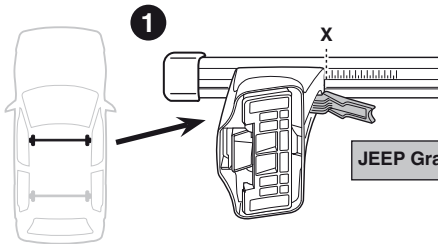
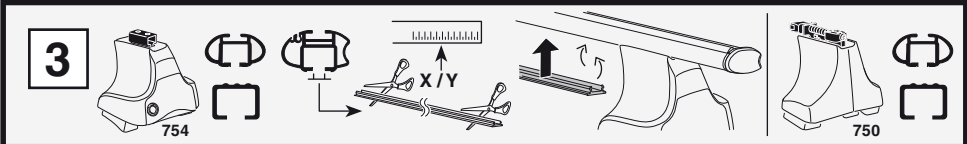
RR ↓ ↑ FR
← →

FL ↓ ↑ RL
← →

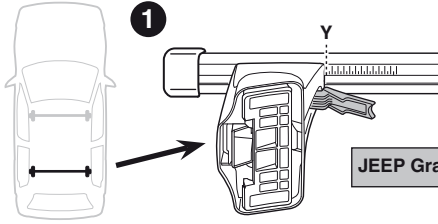
x 1

Kit

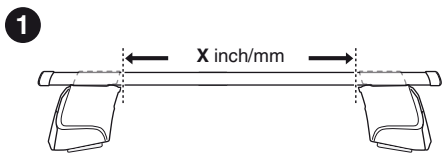
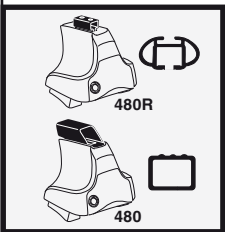




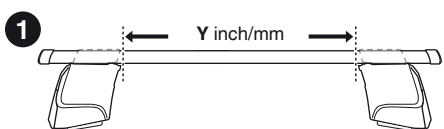
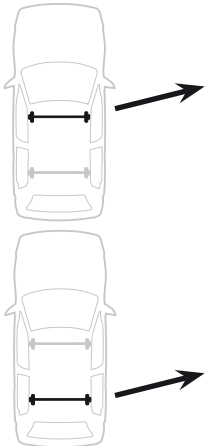
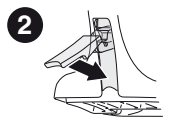
	X
JEEP Grand Cherokee, 5-dr SUV, 92-95, 96-98	39,5



	Y
JEEP Grand Cherokee, 5-dr SUV, 92-95, 96-98	38



	X inch	X mm
JEEP Grand Cherokee, 5-dr SUV, 92-95, 96-98	41 1/8"	1046 mm

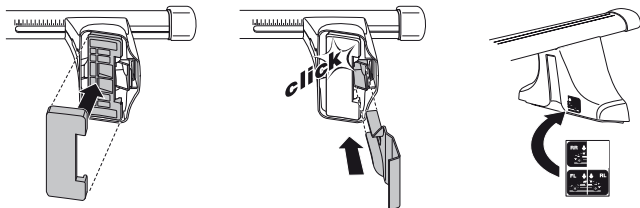
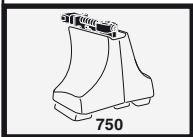
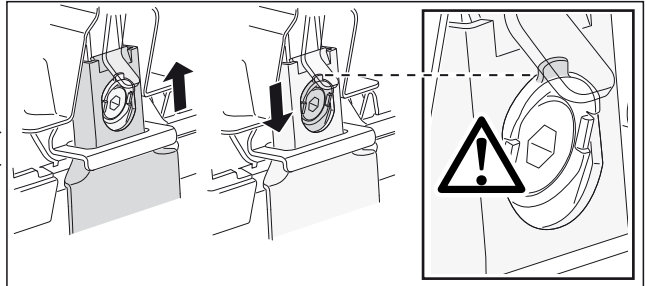
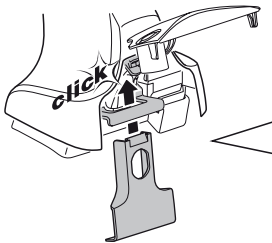
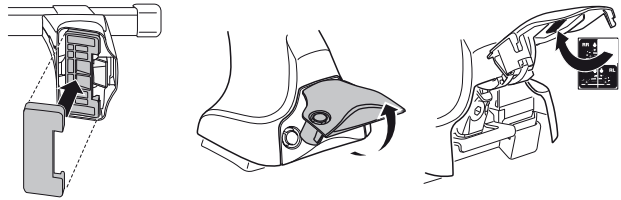
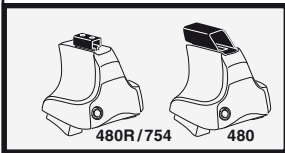
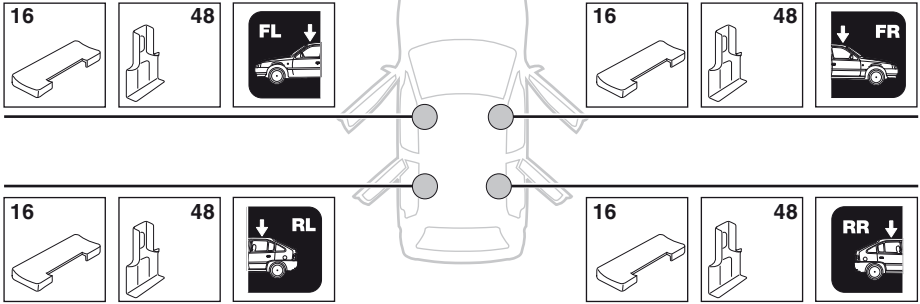


	Y inch	Y mm
JEEP Grand Cherokee, 5-dr SUV, 92-95, 96-98	40 5/8"	1031 mm



4

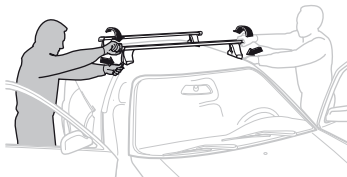
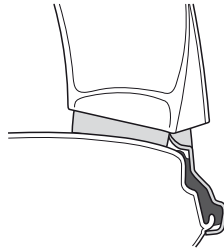
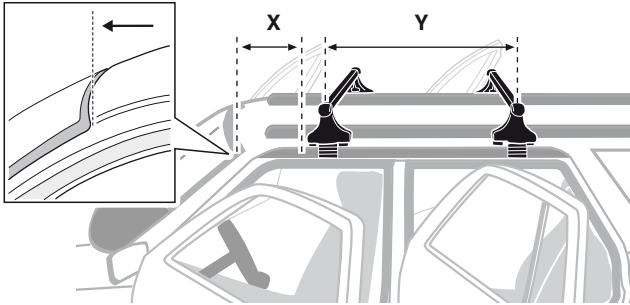
JEEP Grand Cherokee, 5-dr SUV, 92-95, 96-98



5



	X mm	Y mm	X inch	Y inch
JEEP Grand Cherokee, 5-dr SUV, 92-95, 96-98	300 mm	700 mm	11 3/4"	27 1/2"



GB/US Tighten alternately

D Die Schrauben abwechselnd anziehen

F Serrer alternativement chaque côté

NL Afwisselend aan de linker- en de rechterkant aandraaien

I Alternare il serraggio delle viti

E Apretar alternativamente

PT Aperte alternadamente

S Dra åt växelvis

FIN Kierrä vuorotellen

EST Pinguldage vaheldumisi

LAT Pielieciet pamišus

LIT Užsukinėkite pakaitomis

PL Śruby dokręcaj naprzemiennie

RU Затягивайте попеременно

CZ Pokręťta bagažníka dokręcaj dokręcaj naprzemiennie.

SK Doťahujte striedavo

SLO Privijajte izmenično.

HR Naizmjenično zategnite

HU Egymástól függetlenül szorítandó

GR Σφιγγετε εναλλάξ

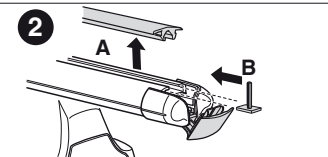
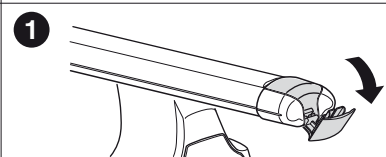
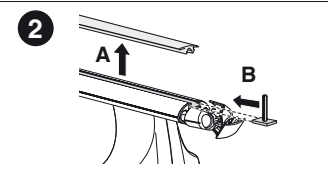
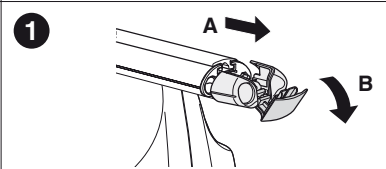
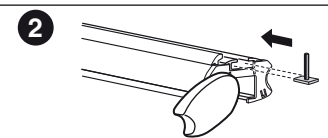
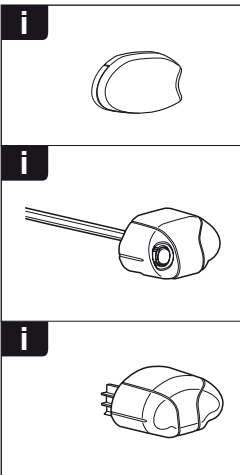
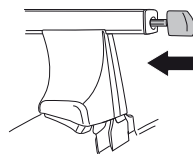
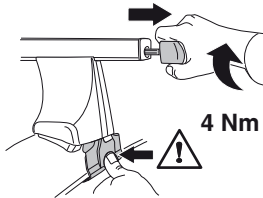
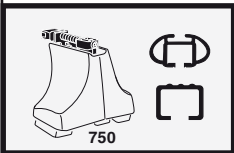
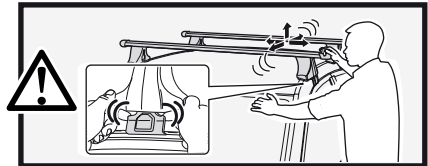
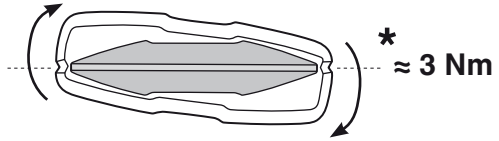
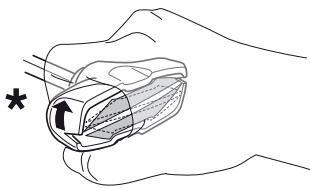
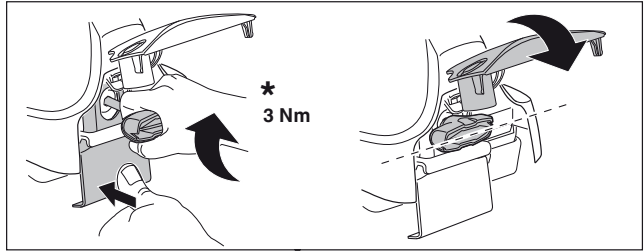
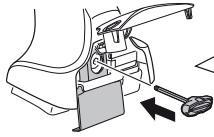
TR Dönüşümlü sıkın

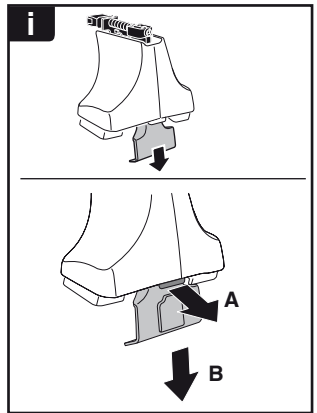
中文 交替拧紧

한국어 번갈아 가며 조이십시오.

日本語 交互に締め付けてください。

ไทย ชันโนแบบสลับ

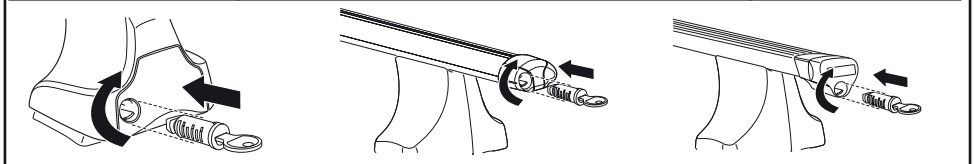
6



THULE
SWEDEN
**ONE
KEY
SYSTEM**



- 544 (x4)
- 596 (x6)
- 588 (x8)
- NA 510 (x10)
- EUR 452 (x12)
- ASIA



WW ▶ Thule Sweden AB, Box 69, 330 33 Hillerstorp, SWEDEN
NA ▶ Thule Inc., 42 Silvermine Road, Seymour, Connecticut 06483, USA

info@thule.com
customer.service@thule.com

www.thule.com